

# "HAVENS REST"

THE E.1/2 - NW.1/4 - NW.1/4 AND W.1/2 - NE.1/4 - NW.1/4 SEC. 28  
T18N R13W WEBBER TWP., LAKE CO., MICH.

SHEET 1 OF 2 SHEETS

### SURVEYOR'S CERTIFICATE:

I, GEORGE BLASS, SURVEYOR, CERTIFY; THAT I HAVE SURVEYED, DIVIDED AND MAPPED THE LAND SHOWN ON THIS PLAT, DESCRIBED AS FOLLOWS: "HAVENS REST" THE E.1/2-NW.1/4-NW.1/4 AND W.1/2-NE.1/4-NW.1/4, SEC. 28, T18N R13W WEBBER TWP., LAKE CO., MICH., BEGINNING AT A POINT ON THE N. SEC. LINE SAID SEC. 28 THAT IS N88°45'00"W ALONG SAID LINE 656.25 FT. FROM THE N.1/4 COR. OF SAID SEC., THENCE N88°45'00"E 656.25 FT. FROM THE N.W. COR. OF SAID SEC., THENCE S0°21'45"E 1271.49 FT. TO THE N.1/16 LINE OF SAID SEC., THENCE S88°20'20"E ALONG SAID 1/16 LINE 1317.00 FT., THENCE N0°33'30"W 1277.97 FT. TO THE POINT OF BEGINNING, CONTAINING 44 LOTS. THAT I HAVE MADE SUCH SURVEY, LAND-DIVISION AND PLAT BY THE DIRECTION OF THE OWNERS OF SUCH LAND. THAT SUCH PLAT IS A CORRECT REPRESENTATION OF ALL THE EXTERIOR BOUNDARIES OF THE LAND SURVEYED AND THE SUBDIVISION OF IT. THAT THE REQUIRED MONUMENTS AND LOT MARKERS HAVE BEEN LOCATED IN THE GROUND OR THAT SURETY HAS BEEN DEPOSITED WITH THE MUNICIPALITY, AS REQUIRED BY SECTION 125 OF THE ACT THAT THE ACCURACY OF THE SURVEY IS WITHIN THE LIMITS REQUIRED BY SECTION 126 OF THE ACT. THAT THE BEARINGS SHOWN ON THE PLAT ARE EXPRESSED AS REQUIRED BY SECTION 126(3) OF THE ACT AS EXPLAINED IN THE LEDGEND.

DATE August 10, 1971

BLASS SURVEYS  
760 MICH. AVE.  
BALDWIN, MICH.

George Blass  
GEORGE BLASS R.L.S. 5489

### PROPRIETOR'S CERTIFICATE:

CHRIST ASSEMBLY INC., A CORPORATION DULY ORGANIZED AND EXISTING UNDER THE LAWS OF THE STATE OF MICHIGAN BY, FRAZIER P. CARLTON, PRESIDENT AND DOROTHY M. SCOTT, SECRETARY AS PROPRIETOR, HAS CAUSED THE LAND TO BE SURVEYED, DIVIDED, MAPPED AND DEDICATED AS REPRESENTED ON THIS PLAT AND THAT 32ND STREET IS FOR THE USE OF THE PUBLIC AND THAT RESUR-RECTION ROAD, COVENANT SQUARE NORTH, COVENANT SQUARE SOUTH, COVENANT SQUARE EAST, COVENANT SQUARE WEST, KINGS COURT, EMMAUS COURT, JERICHO COURT, DAMASCUS COURT, CARLTON PARK AND SCOTT PARK ARE PRIVATE AND FOR THE USE OF THE LOT OWNERS OF THIS PLAT. THAT PUBLIC UTILITY EASEMENTS ARE PRIVATE EASEMENTS AND THAT ALL OTHER EASEMENTS ARE FOR THE USES SHOWN ON THE PLAT.

George Blass  
GEORGE BLASS WITNESS

Clinton Cole  
CLINTON COLE WITNESS

STATE OF MICHIGAN, } S.S.  
LAKE COUNTY

PERSONALLY CAME BEFORE ME THIS 11<sup>th</sup> DAY OF August, 19 71.  
FRAZIER P. CARLTON, PRESIDENT, AND DOROTHY M. SCOTT, SECRETARY, OF THE ABOVE NAMED CORPORATION, TO ME KNOWN TO BE THE PERSONS WHO EXECUTED THE FOREGOING INSTRUMENT, AND TO ME KNOWN TO BE SUCH PRESIDENT AND SECRETARY OF SAID CORPORATION, AND ACKNOWLEDGED THAT THEY EXECUTED THE FOREGOING INSTRUMENT AS SUCH OFFICERS AS THE FREE ACT AND DEED OF SAID CORPORATION, BY ITS AUTHORITY.

George Blass  
GEORGE BLASS NOTARY PUBLIC  
LAKE CO., MICH.  
MY COMMISSION EXPIRES SEPTEMBER 28, 1974

### COUNTY TREASURER'S CERTIFICATE:

THE RECORDS IN MY OFFICE SHOW NO UNPAID TAXES OR SPECIAL ASSESSMENTS FOR THE FIVE YEARS PRECEDING Aug. 13, 1971 INVOLVING THE LANDS INCLUDED IN THIS PLAT.

John P. Riley Jr  
JOHN P. RILEY JR COUNTY TREASURER  
LAKE COUNTY, MICH.

### COUNTY DRAIN COMMISSIONER'S CERTIFICATE:

APPROVED \_\_\_\_\_ AS COMPLYING WITH SECTION 192 OF ACT 288, P.A. 1967 AND THE APPLICABLE RULE AND REGULATIONS PUBLISHED BY MY OFFICE IN THE COUNTY OF LAKE.

NONE  
DRAIN COMMISSIONER

### CERTIFICATE OF COUNTY ROAD COMMISSIONERS:

APPROVED ON August 19, 1971 AS COMPLYING WITH SECTION 183 OF ACT 288, P.A. 1967, AND THE APPLICABLE RULES AND REGULATIONS OF THE BOARD OF ROAD COMMISSIONERS OF LAKE COUNTY.

Alfred Kinney MEMBER Albert Berzley MEMBER  
ALFRED KINNEY ALBERT BERZLEY

Neil Wicks  
NE. WICKS CHAIRMAN

### CERTIFICATE OF MUNICIPAL APPROVAL:

I CERTIFY THAT THIS PLAT WAS APPROVED BY THE TOWNSHIP BOARD, OF THE TOWNSHIP OF WEBBER, AT A MEETING HELD 8-11-71 AND WAS REVIEWED AND FOUND TO BE IN COMPLIANCE WITH ACT 288, P.A. 1967, AND WAS APPROVED BY DISTRICT HEALTH DEPT No. 5 ON APRIL 29, 1969 AND COMPLIES WITH SEC. 192 OF SAID ACT. AND REAPPROVED AUG 3, 1971.

Alice M. Avery  
ALICE M. AVERY WEBBER TWP. CLERK

### COUNTY PLAT BOARD CERTIFICATE:

THIS PLAT HAS BEEN REVIEWED AND IS APPROVED BY THE LAKE COUNTY PLAT BOARD ON Oct. 12, 1971 AS BEING IN COMPLIANCE WITH ALL OF THE PROVISIONS OF ACT 288, P.A. 1967, AND THE PLAT BOARDS APPLICABLE RULES & REGULATIONS.

Taft Utter  
TAFT UTTER COUNTY CLERK AND  
REGISTER OF DEEDS

John P. Riley Jr  
JOHN P. RILEY JR. COUNTY TREASURER

Leo Lapointe  
LEO LAPOINTE CHAIRMAN OF BOARD  
OF COUNTY COMMISSIONERS

### RECORDING CERTIFICATE:

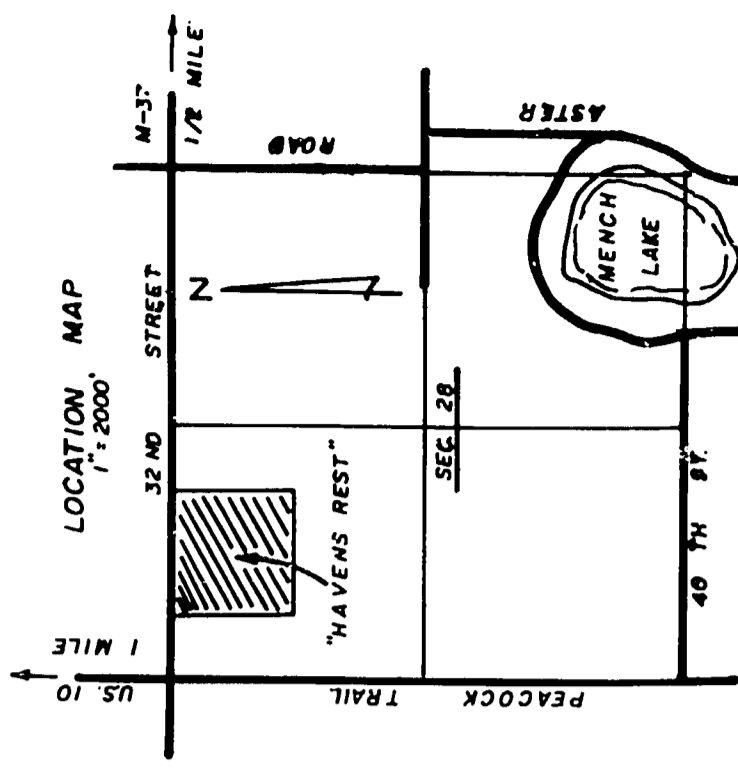
STATE OF MICHIGAN,  
LAKE COUNTY

THIS PLAT WAS RECEIVED FOR RECORD ON THE 13 DAY OF Dec.  
A.D. 19 71 AT 10:09 A.M. RECORDED IN LIBER 4 OF PLATS ON  
PAGES 43-44

Taft Utter  
TAFT UTTER REGISTER OF DEEDS  
5/5

Certified true copy of recorded plat.

Allison Green  
ALLISON GREEN  
STATE TREASURER  
Richard E. Lomax  
Richard E. Lomax - Plat Examiner  
Dec. 23, 1971

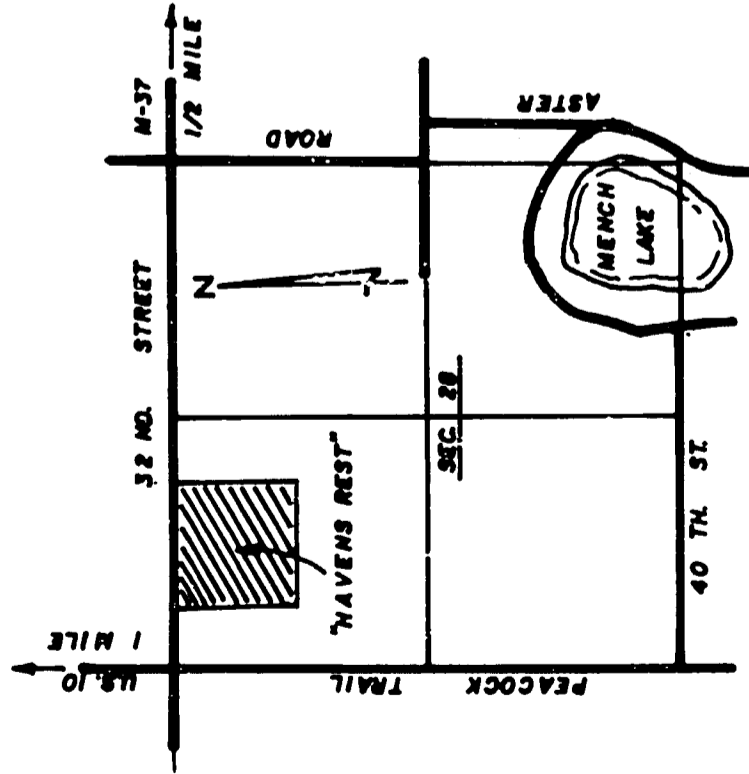


52659

# "HAVENS REST"

THE E 1/2 - NW 1/4 - NW 1/4 AND W 1/2 - NE 1/4 - NW 1/4 SEC. 28  
T18N R13W WEBBER TWP., LAKE CO., MICH.

SHEET 2 OF 2 SHEETS

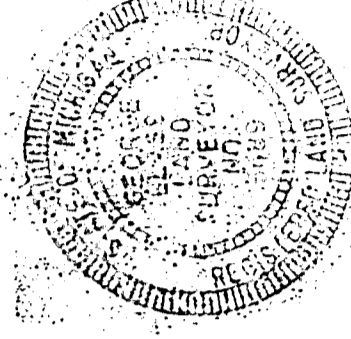


ALL DIMENSIONS ARE IN FEET  
ALL CURVE MEASUREMENTS ARE ARC DIMENSION.  
BEARINGS WERE ESTABLISHED FROM RECORDED BEARINGS  
OF SEC. 28, SUBDIVISION.  
CONCRETE MONUMENTS HAVE BEEN PLACED AT POINTS MARKED THUS (o).  
LOT CORNERS HAVE BEEN MARKED WITH 18" T" IRONS.

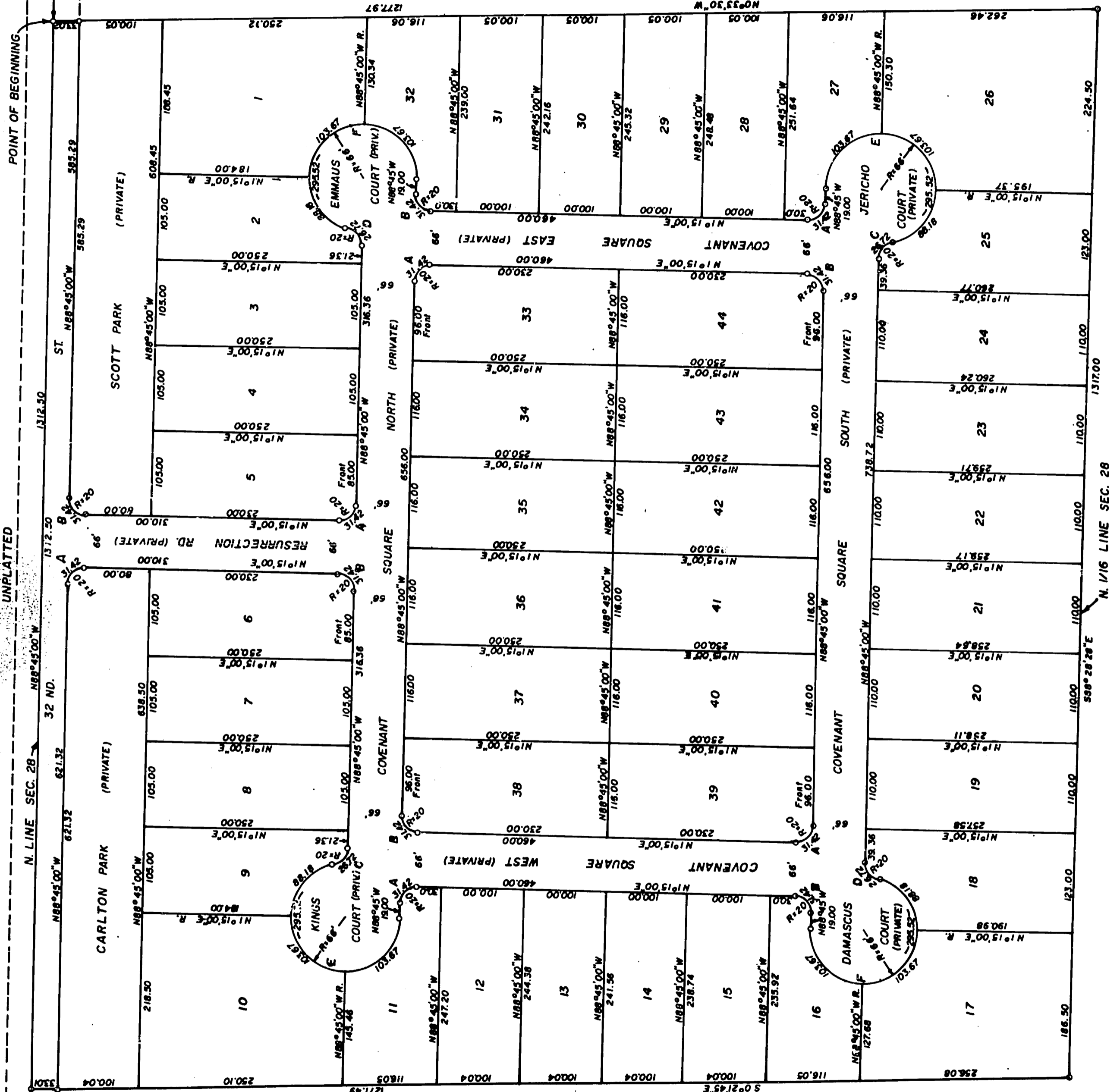
### CURVE DATA

CURVE	A	B	C	D
RADIUS	20.00	20.00	20.00	20.00
CENTRAL ANGLE	90°00'00"	76°33'08"	76°33'08"	76°33'08"
LONG CHORD LENGTH	28.28	24.78	24.78	24.78
LONG CHORD BEARING	N 43°45'00" W	N 46°15'00" E	N 50°28'26" W	N 52°58'26" E

CURVE	E	F
RADIUS	66.00	66.00
CENTRAL ANGLE	256°33'08"	256°33'08"
LONG CHORD LENGTH	103.62	103.62
LONG CHORD BEARING	N 39°31'34" E	N 37°01'34" W



N.W. COR. SEC. 28  
N 88°45'00" W 656.25'  
E 85°25'00" W 1277.97'  
N 1/4 COR. SEC. 28  
T18N R13W  
WEBBER TWP.  
LAKE CO.



52659