

# "WEST'S-LAND ACRES"

SHEET 1 OF 3

PART OF THE W. 1/2 OF THE S.W. 1/4  
SEC. 26, T18N-R13W, WEBBER TWP.,  
LAKE COUNTY, MICHIGAN

### PROPRIETOR'S CERTIFICATE

We as proprietors certify that we caused the land embraced in this plat to be surveyed, divided, monumented, mapped and dedicated as represented on this plat and that the streets are for the use of the public with the exception of North Putnam Lake Drive and Edyth Avenue. They are private streets and June Park is a private park for the use of the lot owners in the plat, that the public utility easements are private easements and that all other easements are for the uses shown on the plat; and that the plat includes all land to the water's edge.

Elmer Laubaugh  
Elmer Laubaugh  
Baldwin, Michigan 49304

Sarah Laubaugh  
Sarah Laubaugh  
Baldwin, Michigan 49304

Donald Smith  
Donald Smith  
1404 Lovett  
Charlevoix, Michigan 49813

June Smith  
June Smith  
1404 Lovett  
Charlevoix, Michigan 49813

Donald R. Figger  
Donald R. Figger  
1040 10 Mile Rd. W  
Rockford, Mich. 49341

Edyth Brown  
Edyth Brown  
2633 Sheridan St.  
Monticue, Mich. 49437

### ACKNOWLEDGMENT

State of Michigan ) S.S.  
County of Lake )

On this 20 day of February, A.D. 1973 before me personally came the above mentioned Elmer Laubaugh, and his wife Sarah Laubaugh, Donald Smith and his wife June Smith, Donald R. Figger and his wife Edyth A. Figger and Edyth Brown, known to me to be the persons who executed the above dedication, and acknowledged the same to be their free act and deed.

Josephine J. Sedberry  
Notary Public, Commission Expires 9/14/76  
My commission expires 9/14/76

### CERTIFICATE OF MUNICIPAL APPROVAL

I certify that this plat was approved by the Township Board of the Township of Webber, at a meeting held December 11, 1973 and was reviewed and found to be in compliance with Act 288, P.A. 1967.

Approved by the Lake County Health Dept. (Dist. #5) on December 8, 1972

Alice M. Avery Clerk

### COUNTY TREASURER'S CERTIFICATE

The records in my office show no unpaid taxes or special assessments for the five years preceding 2-21-1973, involving the lands included in this plat.

Ruth J. Updegraff  
Ruth J. Updegraff County Treasurer

### RECORDING CERTIFICATE

State of Michigan )  
Lake County )

This plat was received for record on the 21<sup>st</sup> day of MAY, 1973 at 3:00 P.M., and recorded in Liber 5 of plate Pages 245-5.

Lucinda K. Keefer  
Registrar of Deeds

### CERTIFICATE OF COUNTY ROAD COMMISSIONERS

Approved on February 22, 1973, as complying with Section 183 of Act 288, P.A. 1967 and the applicable published rules and regulations of the Board of Road Commissioners of Lake County.

N. E. Wicks Chairman Alfred Kimey Member  
absent

Albert Berzley  
Albert Berzley Member

### COUNTY PLAT BOARD CERTIFICATE

This plat has been reviewed and is approved by the Lake County Plat Board on 2/15/73, as being in compliance with all the provisions of Act 288, P.A. 1967, and the plat boards applicable rules and regulations.

Lucinda K. Keefer Reg. of Deeds and County Clerk

Ruth J. Updegraff County Treas. Lee H. Finkle Chairman

### COUNTY DRAIN COMMISSIONER'S CERTIFICATE

Approved on February 22, 1973, as complying with Section 192 of Act 288, P.A. 1967 and the applicable rules and regulations published by my office in the County of Lake.

N. E. Wicks Drain Commissioner (acting)

### SURVEYOR'S CERTIFICATE

I, Paul Paquette, surveyor, certify:

That I have surveyed, divided and mapped the land shown on this plat, described as follows: "WEST'S-LAND ACRES" part of the W 1/2 of the SW 1/4 section 26, T18N-R13W, Webber Township, Lake County, Michigan described as beginning at the W 1/4 corner section 26, T18N, R13W, Webber Township, Lake County, Michigan; Thence S 88° 37' 10" E along the East and West 1/4 line 1325.38 feet to the 1/16 corner; Thence S 0° 01' 00" E along the West 1/16 line 2542.73 feet; Thence S 59° 02' 40" W 94.53 feet; Thence N 87° 58' 50" W along the south line of section 26 18.46 feet to edge Putnam Lake; Thence North along the East shore of Putnam Lake as follows: Thence N 24° 38' 40" E 220.97 feet; Thence N 1° 12' 40" W 194.95 feet; Thence N 26° 11' 00" W 239.64 feet; Thence N 54° 41' 30" W 146.13 feet; Thence N 20° 40' 40" W 87.29 feet; Thence N 0° 00' 30" W 192.65 feet; Thence N 20° 40' 40" W 87.29 feet; Thence N 68° 51' 00" W 152.31 feet; Thence S 47° 10' 10" W 215.69 feet to west line section 26; Thence N 0° 18' 50" W along west line Section 26, 1540.00 feet to point of beginning. Containing 53 lots, and (65.2 acres)

That I have made such survey, land-division and plat by the direction of the owners of such land, on September 25, 1972.

That such plat is a correct representation of all the exterior boundaries of the land surveyed and the subdivision of it.

That the required monuments and lot markers have been located in the ground as required by section 125 of the act.

That the accuracy of survey is within the limits described by section 126 of the act.

That the bearings shown on the plat are expressed as required by section 126 (3) of the act and as explained in the legend.

DEC. 28, 1972  
Date

PAQUETTE SURVEYS  
P. O. BOX 367  
Hesperia, Mich. 49421

53635

# "WEST'S-LAND ACRES"

PART OF THE W. 1/2 OF THE SW. 1/4  
 SEC. 26, T18N-R13W, WEBBER TWP.,  
 LAKE COUNTY, MICHIGAN

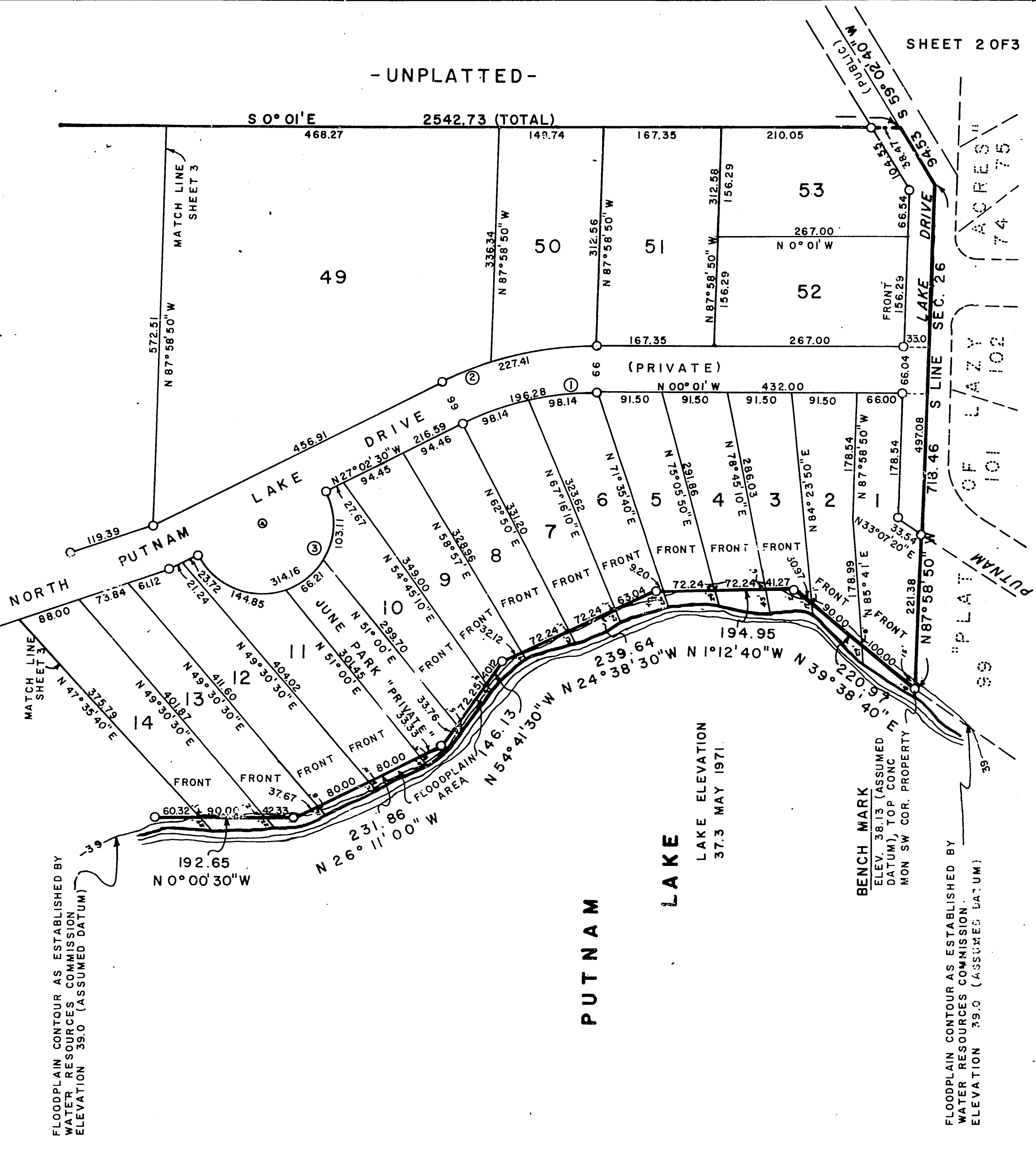
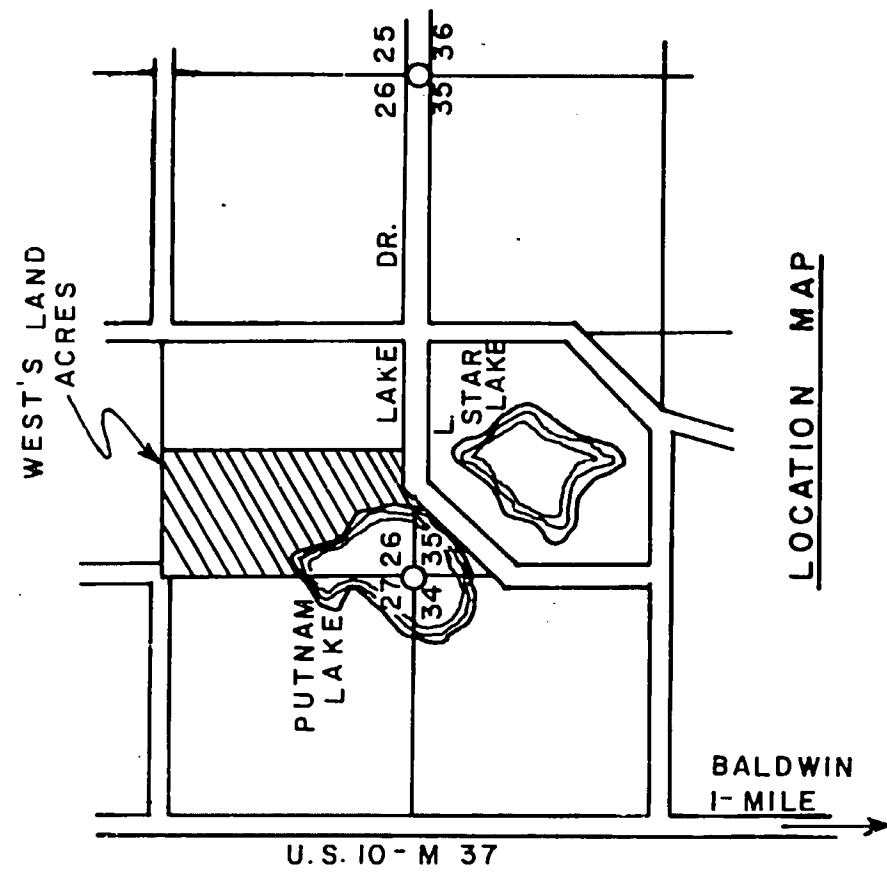
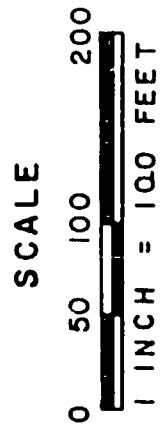
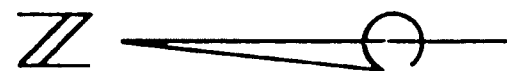
CURVE DATA			
CURVE	ANGLE	RADIUS	CHD BRG
1	27°01'30"	416.13	N 13°31'45"W
2	27°01'30"	482.13	N 13°31'45"W
3	180°00'	100.00	N 27°02'30"W

### LEGEND

ALL DIMENSIONS ARE IN FEET  
 PLAT BEARINGS WERE DETERMINED FROM BEARING  
 ON THE EAST LINE OF THE RECORDED PLAT OF  
 "PUTNAM PARK"  
 CONCRETE MONUMENTS 4" IN DIA. ARE AT ALL POINTS  
 MARKED THUS (O)  
 ALL LOT CORNERS ARE IRON PIPES 3/4" IN DIA.  
 18" IN LENGTH (.6 LB PER LINEAL FOOT)  
 ALL CURVE DIMENSIONS ARE ARC LENGTHS

FLOODPLAIN CONTOUR AS ESTABLISHED BY  
 WATER RESOURCES COMMISSION  
 ELEVATION 39.0 (ASSUMED DATUM)

FLOODPLAIN CONTOUR AS ESTABLISHED BY  
 WATER RESOURCES COMMISSION  
 ELEVATION 39.0 (ASSUMED DATUM)



SHEET 2 OF 3

ACRES 74.75

LAZY 101

PLAT 99

ACRES 75

53635

# 172 P



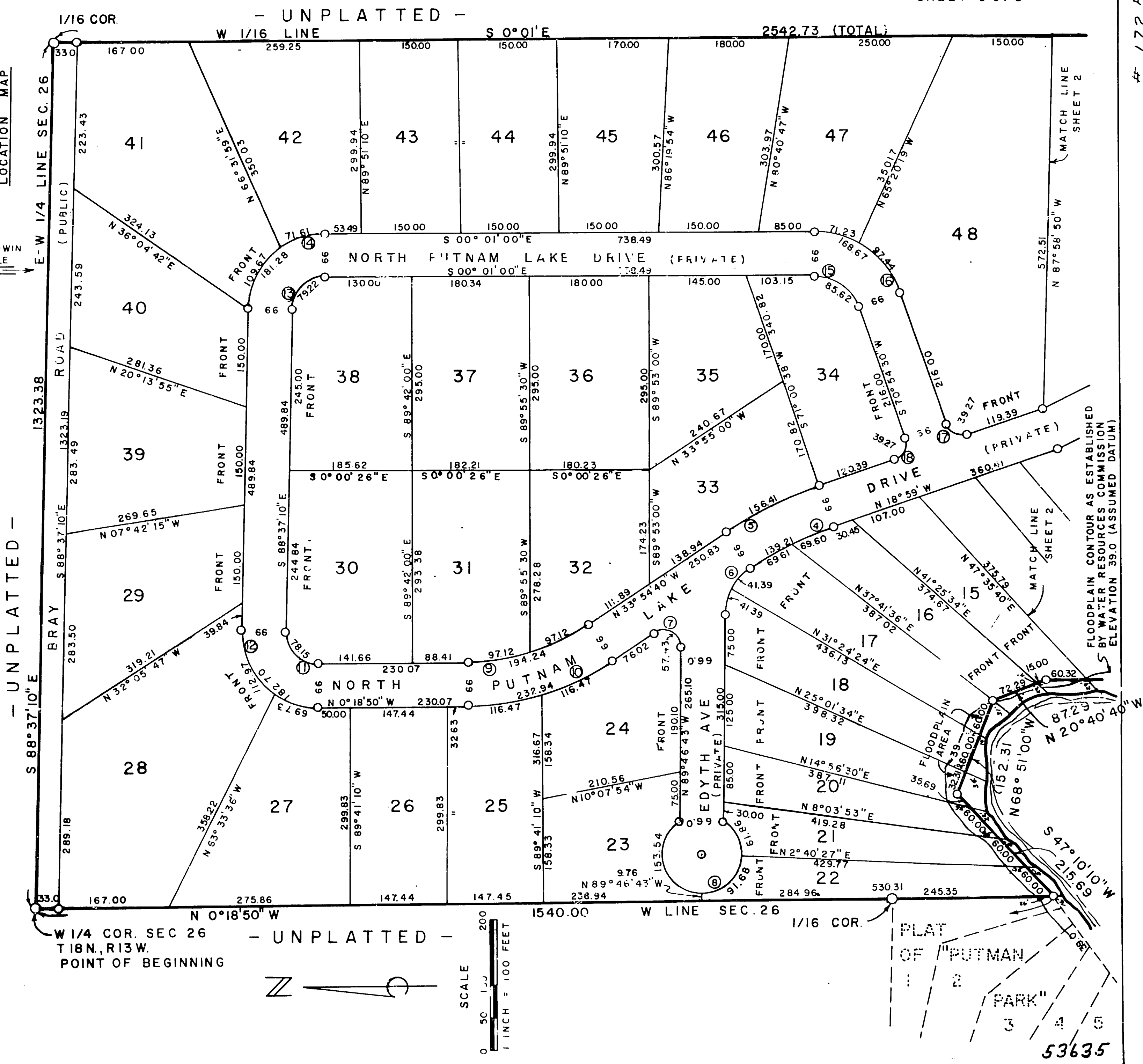
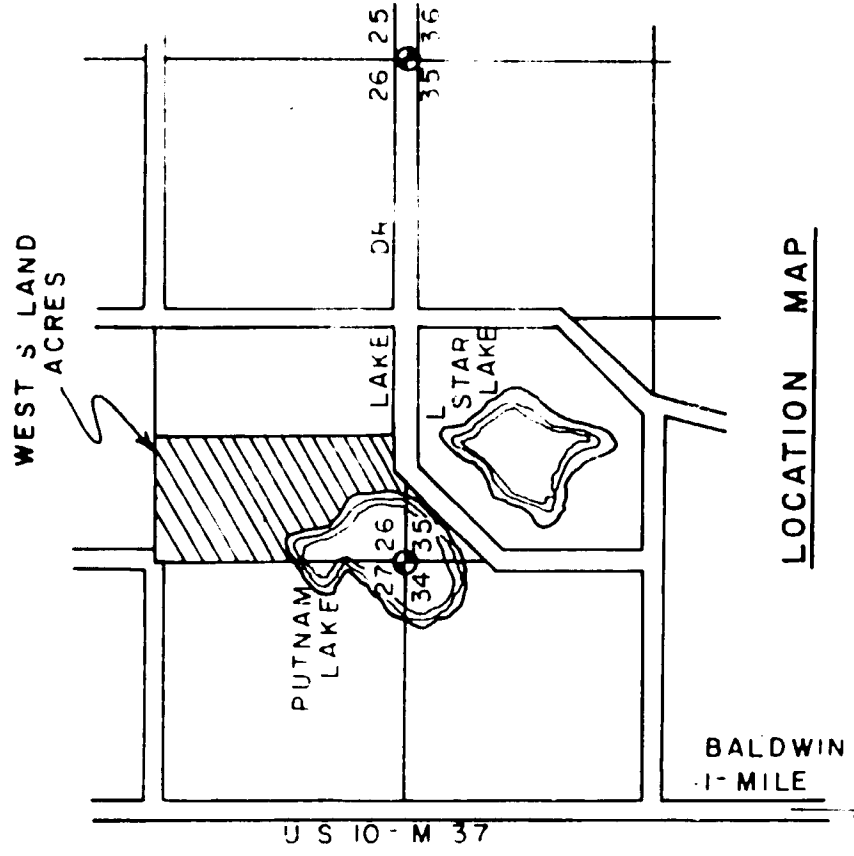
# "WEST'S-LAND ACRES"

PART OF THE W. 1/2 OF THE S.W. 1/4  
SEC. 26, T18N-R13W, WEBBER TWP.,  
LAKE COUNTY, MICHIGAN

CURVE DATA			
CURVE	ANGLE	RADIUS	CHD BRG
4	14°55'40"	534.31	N26°26'50"W
5	14°55'40"	600.31	N26°26'50"W
6	55°52'03"	85.05	N61°50'34"W
7	124°07'58"	26.51	N28°09'18"E
8	293°14'34"	60.00	N0°13'17"E
9	33°35'50"	331.25	N17°06'45"W
10	3°35'50"	307.25	N17°06'45"W
11	9°41'43"	114.46	N45°32'00"E
12	9°41'40"	114.46	N45°32'00"E
13	88°36'10"	51.23	S44°19'05"E
14	88°36'10"	117.23	S44°19'05"E
15	7°02'00"	70.05	S35°30'00"W
16	7°02'00"	136.05	S35°30'00"W
17	90°	25.00	N28°01'00"E
18	90°	25.00	N63°59'00"W

### LEGEND

ALL DIMENSIONS ARE IN FEET  
PLAT BEARINGS WERE DETERMINED FROM BEARING  
ON THE EAST LINE OF THE RECORDED PLAT OF  
"PUTMAN PARK"  
CONCRETE MONUMENTS 4" DIA ARE AT ALL POINTS  
MARKED THUS (O)  
ALL LOT CORNERS ARE IRON PIPES 3/4" IN DIA  
18" IN LENGTH (.6LB PER LINEAL FOOT)  
ALL CURVE DIMENSIONS ARE ARC LENGTHS



# 172 P

53635