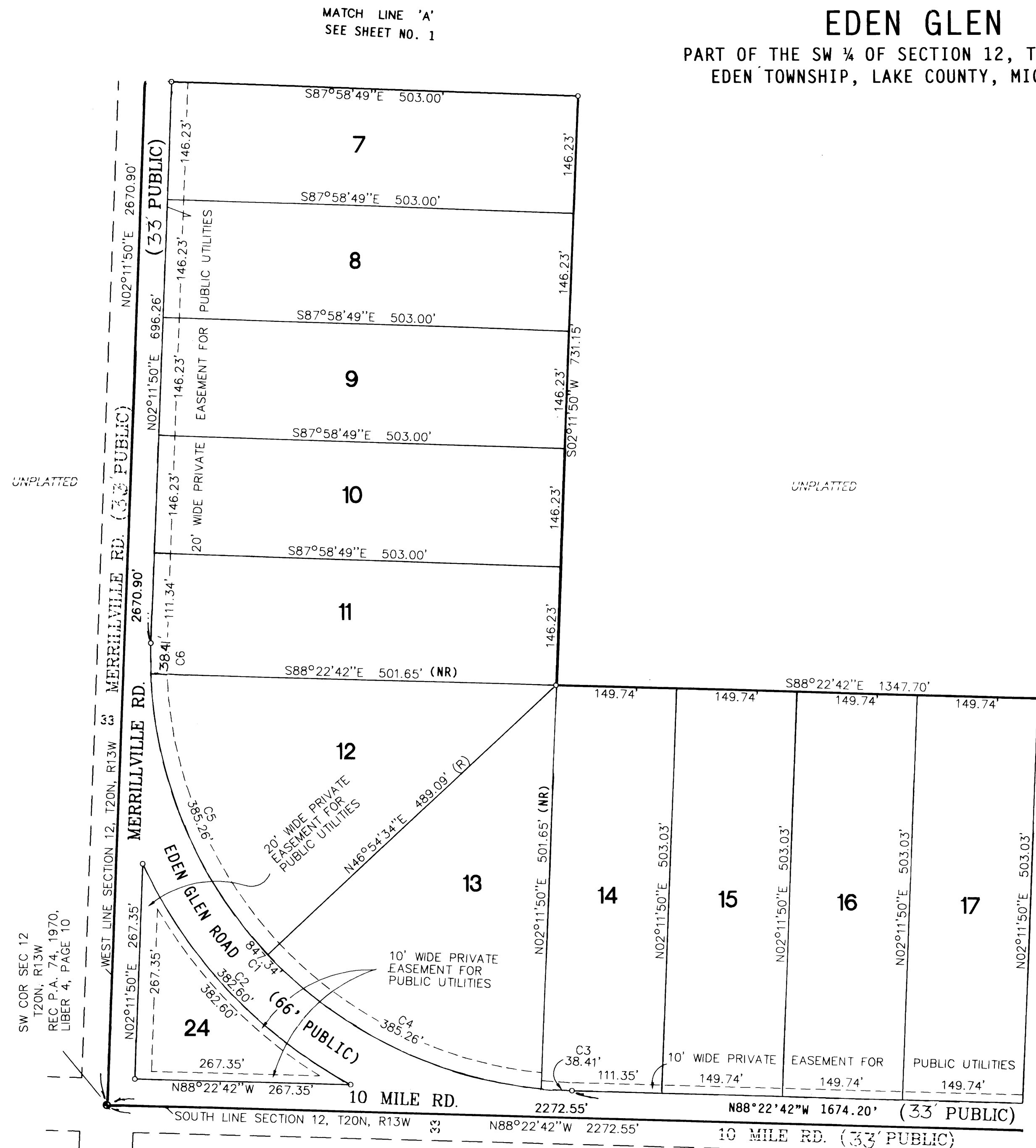


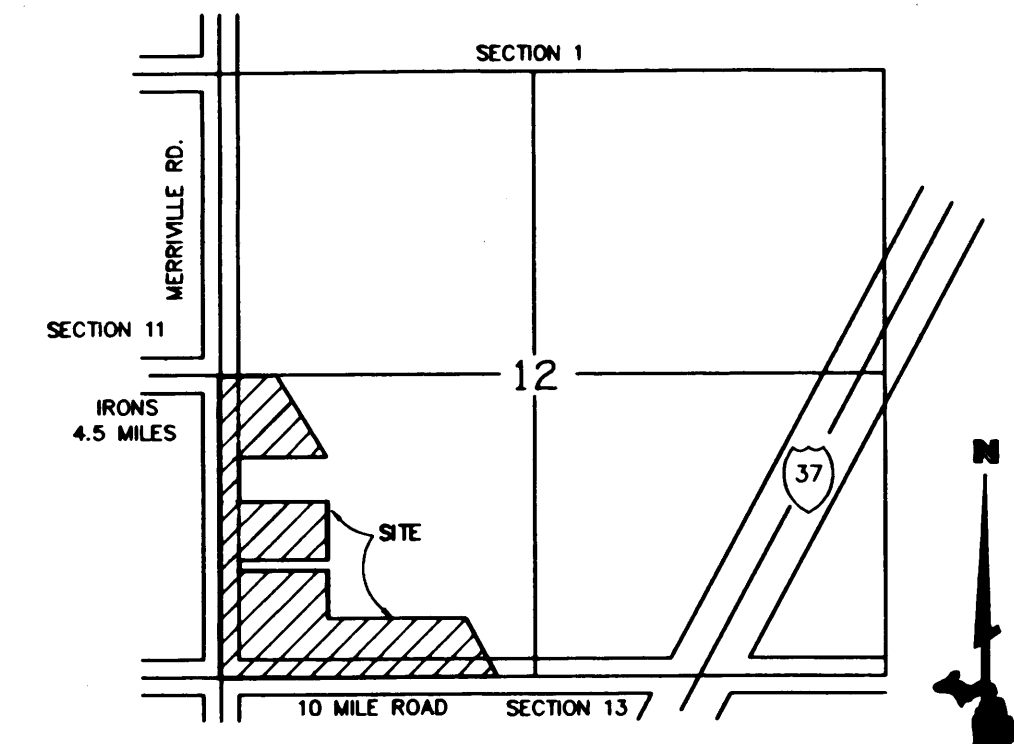


**EDEN GLEN**  
PART OF THE SW ¼ OF SECTION 12, T20N, R13W,  
EDEN TOWNSHIP, LAKE COUNTY, MICHIGAN.



SW COR SEC 12  
T20N, R13W  
REC P.A. 74, 1970,  
LIBER 4, PAGE 10

Curve	Delta Angle	Radius	Arc	Tangent	Chord	Chord Bearing
1	90°34'32"	536.00	847.34	541.41	761.82	N 43°05'26" W
2	36°24'50"	602.00	382.60	198.01	376.19	S 43°05'26" E
3	4°06'20"	536.00	38.41	19.21	38.40	N 86°19'32" W
4	41°10'56"	536.00	385.26	201.37	377.02	N 63°40'54" W
5	41°10'56"	536.00	385.26	201.37	377.02	N 22°29'57" W
6	4°06'19"	536.00	38.41	19.21	38.40	N 0°08'40" E



SCALE 1" = 100'  
0' 100' 200'

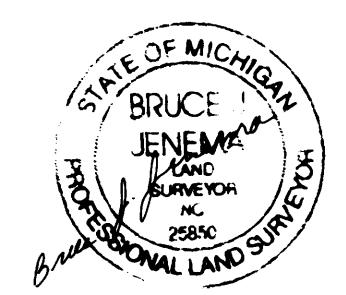
**LEGEND**

- ALL DIMENSIONS ARE IN FEET.
- ALL CURVILINEAR DIMENSIONS ARE ARC LENGTHS.
- PLAT BEARINGS ARE BASED ON THE EAST LINE OF WHISPERING PINES SUBDIVISION, RECORDED BOOK 4 OF PLATS, PAGES 28 AND 29, LAKE COUNTY RECORDS.
- A 1/2" IN DIAMETER BY 18" IN LENGTH STEEL ROD CAPPED WITH A RED PLASTIC IDENTIFICATION CAP READING B.J.J. 25850 HAS BEEN PLACED AT ALL LOT CORNERS.
- CONCRETE MONUMENTS ARE SET AT ALL POINTS MARKED THUS "o". MONUMENTS ARE CONSTRUCTED 36 INCHES IN LENGTH, WITH A 1/2 INCH DIAMETER STEEL ROD ENCASED IN CONCRETE 4 INCHES IN DIAMETER.

(R) DENOTES RADIAL LOT LINE.  
(NR) DENOTES NON RADIAL

This plat is subject to restrictions as required by Act 288 of 1967, as amended on certain lots with respect to the requirements of the Michigan Department of Environmental Quality, which is recorded in Liber 239, page 163-166 Lake County Records.

MATCH LINE 'B'  
SEE SHEET NO. 3



CERTIFIED TRUE COPY OF  
RECORDED PLAT  
BY DEPARTMENT OF CONSUMER  
AND INDUSTRY SERVICES

BY Maynard R. Dyer  
MAYNARD R. DYER, P.S.  
MANAGER  
SUBDIVISION CONTROL SECTION

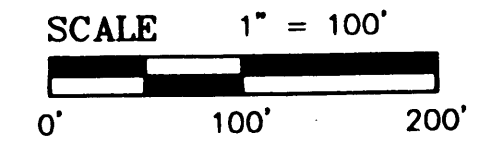
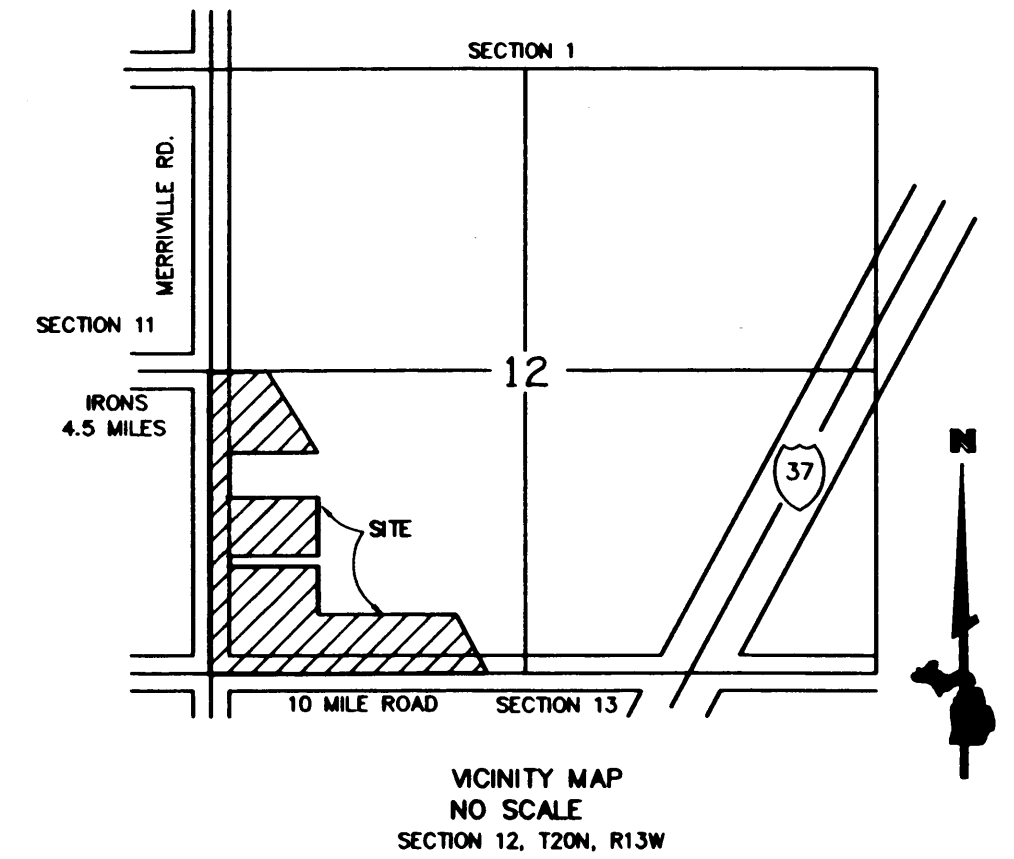
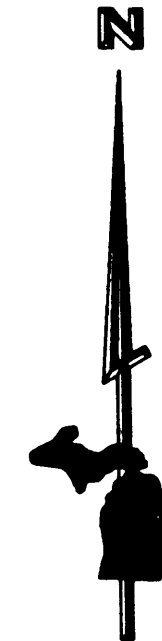
DATE 11-18-99

Jenema Land Surveys  
82 Division Street  
Manistee, MI. 49660

65592

# EDEN GLEN

PART OF THE SW ¼ OF SECTION 12, T20N, R13W,  
EDEN TOWNSHIP, LAKE COUNTY, MICHIGAN.



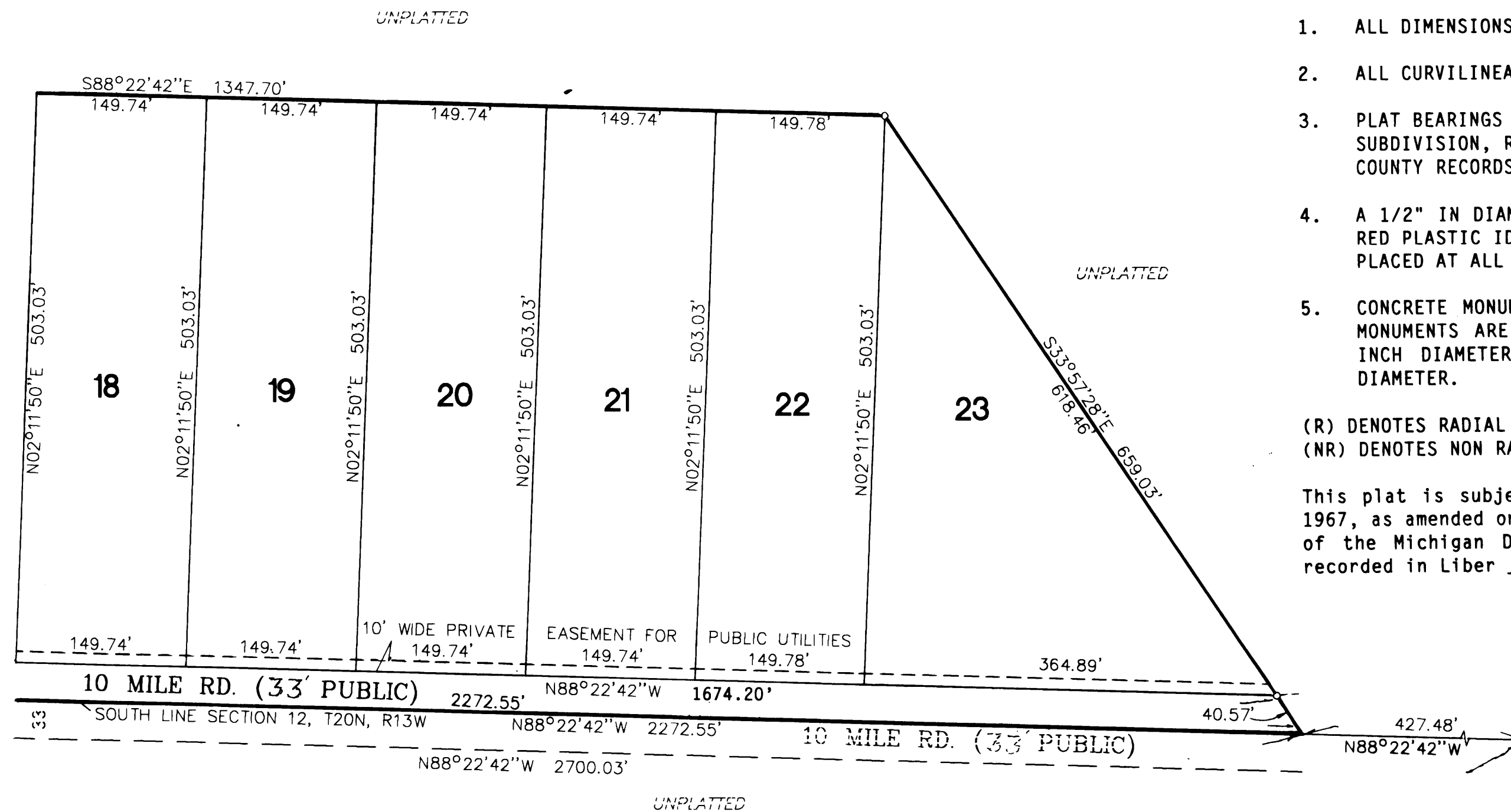
**LEGEND**

1. ALL DIMENSIONS ARE IN FEET.
2. ALL CURVILINEAR DIMENSIONS ARE ARC LENGTHS.
3. PLAT BEARINGS ARE BASED ON THE EAST LINE OF WHISPERING PINES SUBDIVISION, RECORDED BOOK 4 OF PLATS, PAGES 28 AND 29, LAKE COUNTY RECORDS.
4. A 1/2" IN DIAMETER BY 18" IN LENGTH STEEL ROD CAPPED WITH A RED PLASTIC IDENTIFICATION CAP READING B.J.J. 25850 HAS BEEN PLACED AT ALL LOT CORNERS.
5. CONCRETE MONUMENTS ARE SET AT ALL POINTS MARKED THUS "o". MONUMENTS ARE CONSTRUCTED 36 INCHES IN LENGTH, WITH A 1/2 INCH DIAMETER STEEL ROD ENCASED IN CONCRETE 4 INCHES IN DIAMETER.

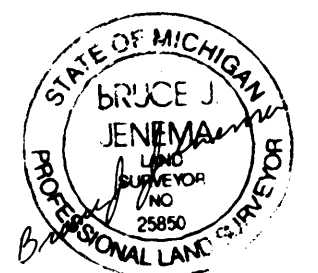
(R) DENOTES RADIAL LOT LINE.  
(NR) DENOTES NON RADIAL

This plat is subject to restrictions as required by Act 288 of 1967, as amended on certain lots with respect to the requirements of the Michigan Department of Environmental Quality, which is recorded in Liber 239, page 163-164 Lake County Records.

MATCH LINE 'B'  
SEE SHEET NO. 2



S 1/4 COR SEC 12  
T20N, R13W  
REC P.A. 74, 1970,  
LIBER 4, PAGE 10



Jenema Land Surveys  
82 Division Street  
Manistee, MI. 49660

65592

