

PLAT OF
EASTGATE PARK
 SECTION 33 T18N-R12W
 CHERRY VALLEY TWP.
 LAKE COUNTY
 MICHIGAN.

Copy

Copy

CCPY
 Register's Office
 Lake County, Mich.
 Plat of Eastgate Park, Cherry Valley Township
 was Recorded this 27th day of
July A.D., 1940 at 2:00 o'clock
 P.M. in Liber 66 of Plats
 on Page No. 2
H. W. Davis
 Register of Deeds
 ORIGINAL ON FILE

DEDICATION

KNOW ALL MEN BY THESE PRESENTS, THAT WE, C. RAYMOND BRANCH AND GLADYS BRANCH HIS WIFE, AS PROPRIETORS, HAVE CAUSED THE LAND EMBRACED IN THE ANNEXED PLAT TO BE SURVEYED, LAID OUT AND PLATTED, TO BE KNOWN AS "EASTGATE PARK" AND THAT THE STREETS AND ALLEYS AS SHOWN ON SAID PLAT ARE HEREBY DEDICATED TO THE USE OF THE PUBLIC.

SIGNED AND SEALED IN PRESENCE OF

Ray Trucks (L.S.)
 C. RAYMOND BRANCH
Laura Rockwell (L.S.)
 GLADYS BRANCH

STATE OF MICHIGAN,)
 COUNTY OF LAKE) ss.

ON THIS 17th DAY OF June 1940 BEFORE ME, A NOTARY PUBLIC IN AND FOR SAID COUNTY, PERSONALLY CAME THE ABOVE NAMED C. RAYMOND BRANCH AND GLADYS BRANCH, HIS WIFE, KNOWN TO ME TO BE THE PERSONS WHO EXECUTED THE ABOVE DEDICATION, AND ACKNOWLEDGED THE SAME TO BE THEIR FREE ACT AND DEED.

Ray Trucks
 NOTARY PUBLIC, LAKE COUNTY, MICH.

MY COMMISSION EXPIRES August 15, 1941

DESCRIPTION OF LAND PLATTED

THE LAND EMBRACED IN THE ANNEXED PLAT OF "EASTGATE PARK" A PORTION OF THE SOUTHWEST QUARTER OF THE SOUTHEAST QUARTER OF SECTION 33, TOWN 18 NORTH, RANGE 12 WEST, IS DESCRIBED AS FOLLOWS:

BEGINNING AT A POINT WHICH IS N 2°15'E 86.8 FEET FROM THE EAST EIGHTH CORNER ON THE SOUTH LINE OF SECTION 33, TOWN 18 NORTH, RANGE 12 WEST, THENCE N 2°15'E ALONG THE EAST EIGHTH LINE 1233.3 FEET, THENCE N 89°00'W 331.95 FEET, THENCE S 2°04'W 1230.7 FEET, THENCE S 88°33'W 327.85 FEET TO THE POINT OF BEGINNING.

SURVEYOR'S CERTIFICATE

I HEREBY CERTIFY THAT THE PLAT HEREON DELINEATED IS A CORRECT ONE AND THAT PERMANENT METAL MONUMENTS CONSISTING OF BARS NOT LESS THAN ONE HALF INCH IN DIAMETER AND 48 INCHES IN LENGTH, OR SHORTER BARS OF NOT LESS THAN ONE HALF INCH IN DIAMETER LAPPED OVER EACH OTHER AT LEAST 6 INCHES WITH AN OVER-ALL LENGTH OF NOT LESS THAN 48 INCHES, ENCASED IN A CONCRETE CYLINDER AT LEAST 4 INCHES IN DIAMETER AND 48 INCHES IN DEPTH HAVE BEEN PLACED AT POINTS MARKED THUS O AS THEREON SHOWN AT ALL ANGLES IN THE BOUNDARIES OF THE LAND PLATTED, AT ALL THE INTERSECTIONS OF STREETS AND ALLEYS AND AT THE INTERSECTIONS OF STREETS AND ALLEYS WITH THE BOUNDARIES OF THE PLAT AS SHOWN ON SAID PLAT. ALL DIMENSIONS ARE IN FEET AND DECIMALS THEREOF.

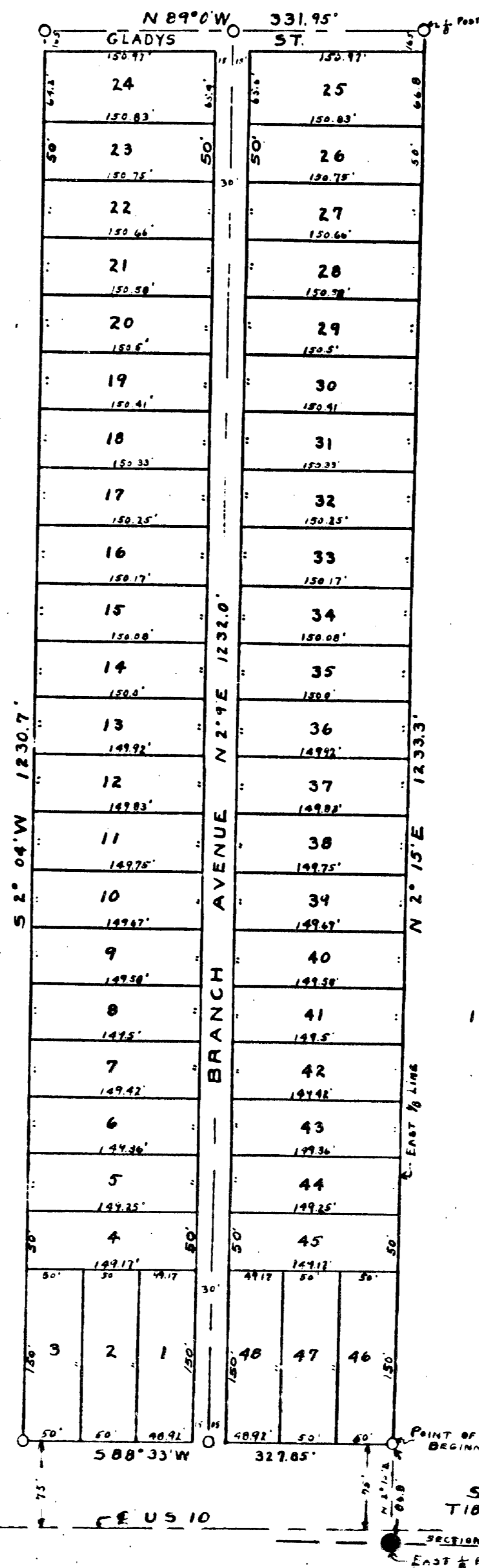
C. E. Herman
 C. E. HERMAN
 REGISTERED LAND SURVEYOR

COUNTY TREASURER'S CERTIFICATE RELATING TO TAXES

OFFICE OF COUNTY TREASURER, LAKE COUNTY.
 I HEREBY CERTIFY, THAT THERE ARE NO TAX LIENS OR TITLES HELD BY THE STATE ON THE LANDS DESCRIBED HEREON, AND THAT THERE ARE NO TAX LIENS OR TITLES HELD BY INDIVIDUALS ON SAID LANDS, FOR THE FIVE YEARS PRECEDING THE 14th DAY OF June 1940 AND THAT THE TAXES FOR SAID PERIOD OF FIVE YEARS ARE PAID, AS SHOWN BY THE RECORDS OF THIS OFFICE.

THIS CERTIFICATE DOES NOT APPLY TO TAXES, IF ANY, NOW IN PROCESS OF COLLECTION BY TOWNSHIP, CITY OR VILLAGE COLLECTING OFFICERS.

George W. Bradford
 GEORGE W. BRADFORD, COUNTY TREASURER



CERTIFICATE OF TOWNSHIP APPROVAL

THIS PLAT WAS APPROVED BY THE TOWNSHIP BOARD OF THE TOWNSHIP OF CHERRY VALLEY AT A MEETING HELD June 16 1940.

Minna B. Johnson
 CLERK MINNA B. JOHNSON

CERTIFICATE AS TO COUNTY AND STATE TRUNK LINE ROADS

WE HEREBY CERTIFY THAT SAID PLAT APPEARS TO INCLUDE LAND LOCATED ON BOTH COUNTY AND TRUNK LINE ROADS.

Andrew Alquire
 ANDREW ALQUIRE PROBATE JUDGE

H. W. Davis
 H. W. DAVIS COUNTY CLERK

George W. Bradford
 GEORGE W. BRADFORD COUNTY TREASURER

CERTIFICATE OF APPROVAL BY BOARD OF COUNTY ROAD COMMISSIONERS

THIS PLAT HAS BEEN EXAMINED AND WAS APPROVED ON THE 17th DAY OF June 1940 BY THE LAKE COUNTY BOARD OF ROAD COMMISSIONERS.

Thomas B. Lynch
 THOMAS B. LYNCH CHAIRMAN

N. E. Wick
 N. E. WICK MEMBER

A. L. Lee
 A. L. LEE MEMBER

CERTIFICATE OF APPROVAL BY COUNTY BOARD

THIS PLAT WAS APPROVED ON THE 24th DAY OF June 1940

Andrew Alquire
 ANDREW ALQUIRE PROBATE JUDGE

H. W. Davis
 H. W. DAVIS COUNTY CLERK

George W. Bradford
 GEORGE W. BRADFORD COUNTY TREASURER

Examined and Approved
July 25, 1940

Mayme Jewell Purdy
 MAYME JEWELL PURDY DEPUTY AUDITOR GENERAL

FILED IN AUDITOR GENERAL'S DEPT.

August 12, 1940
Mayme Jewell Purdy
 MAYME JEWELL PURDY DEPUTY AUDITOR GENERAL

I HEREBY CERTIFY THAT THIS COPY IS A TRUE COPY OF THE PLAT OR PLAT FORM AND THE REGISTER OF DEEDS FOR RECORDING.

COMPARED July 25, 1940
Mayme Jewell Purdy
 MAYME JEWELL PURDY DEPUTY AUDITOR GENERAL

28014