

WOLF LAKE SUBDIVISION NO. 1

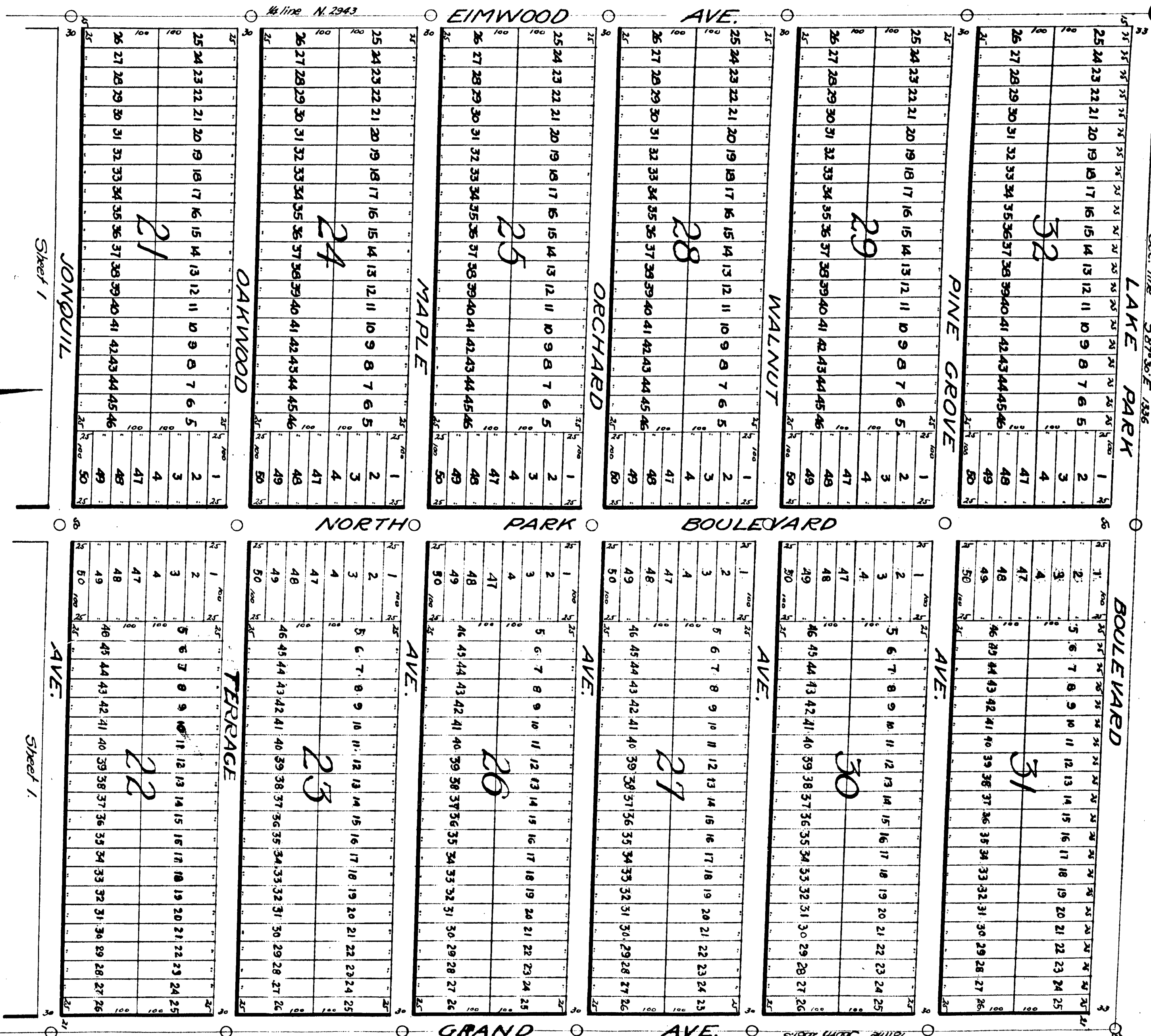
Surveyed & Platted
Geo. H. Johnson, Reg. D. Sr.
Baldwin, Mich.

Comprising Govt. Lot No. 2, Sec. 27, T19N, R13W,
LAKE COUNTY, MICHIGAN.

Part in 2 Sheets
Sheet # 2

Place of Beginning
1/4 Section N. side of
Sec. 27

Sec. line S87°30'E 1336



Sheet 1

Sheet 1

Scale of Map 1" = 100'
Directions are given in feet.



