



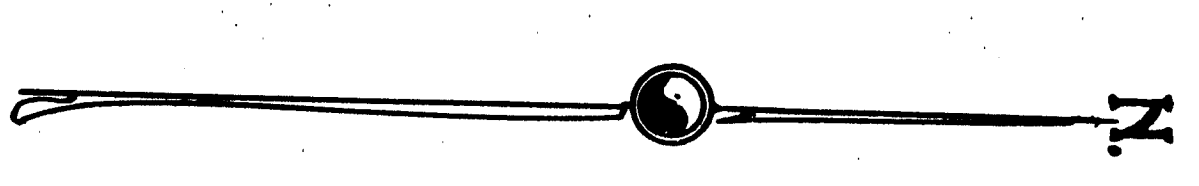
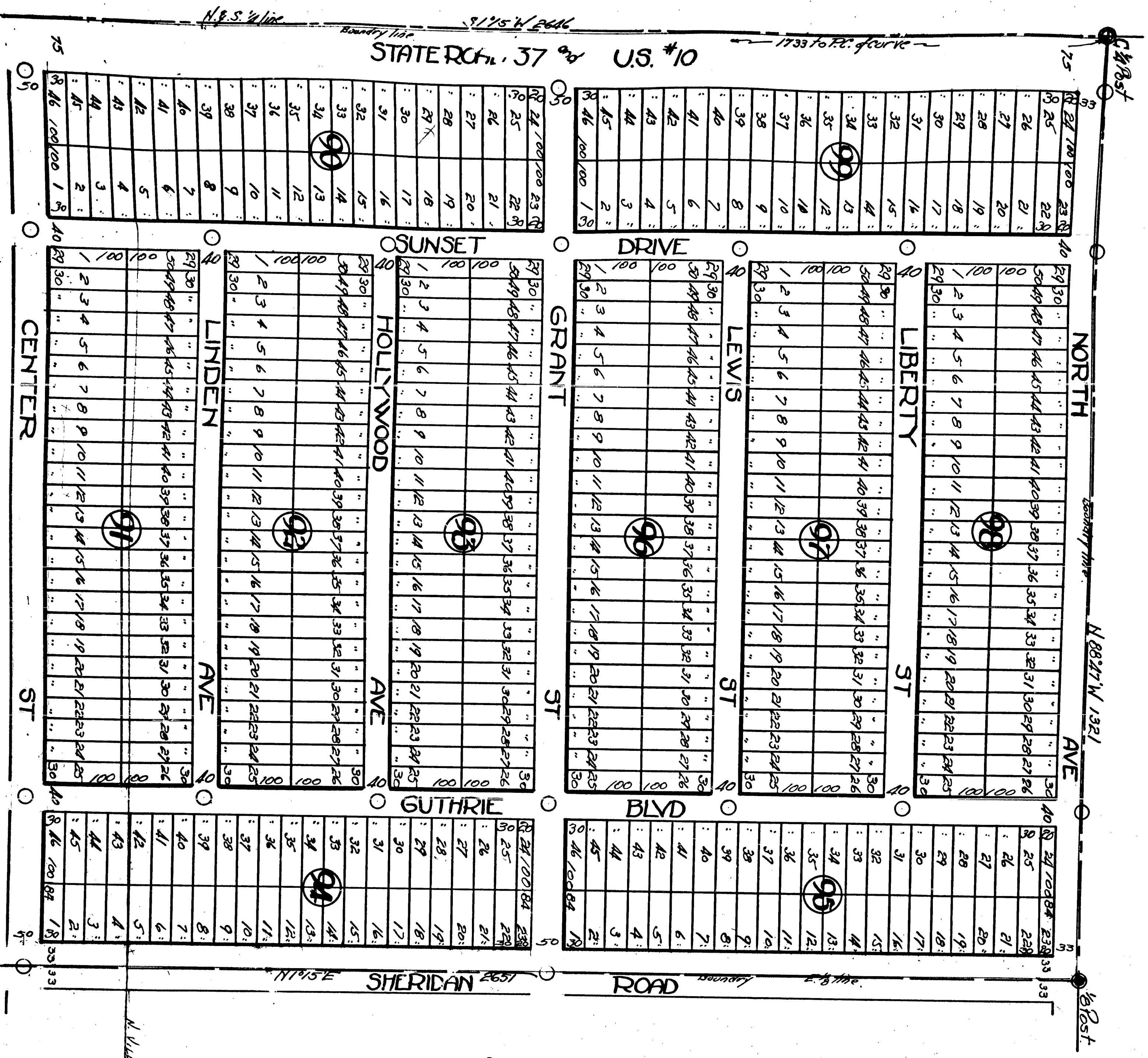


6257  
10/1/21

# LARKEL AND ACRES NOS

SHEET NO 2  
included in 2 sheets

24185



N. 1/2 Sec. 33

SCALE  
1 inch = 100 FT  
Fill dimensions given in ft or decimals thereof



# LAKE COUNTRY MICH ACRES NO 3

24185

NW 1/4 of SE 1/4 - N 1/2 of SW 1/4 of SE 1/4 - SE 1/4 of SW 1/4 of SE 1/4 - SEC 34 TWP 18 NORTH RANGE 13 WEST  
LAKE COUNTY MICH

### DEDICATION

KNOW ALL MEN BY THESE PRESENTS - That I, William E. Manner, as trustee have caused the land embraced in the annexed plat to be surveyed laid out and platted to be known as "LAKE COUNTRY MICH - N 1/2 of SW 1/4 of SE 1/4 - SE 1/4 of SW 1/4 of SE 1/4 - SEC 34 TWP 18 N R 13 W LAKE COUNTY MICH" and that the streets, alleys and parts as shown on said plat are hereby dedicated to the use of the public.

Wm. E. Manner is Trustee  
Signed and Sealed  
in presence of

Joseph E. Nelson  
William E. Manner

State of Michigan  
County of Washtenaw

On this 20 day of Sept 1927  
before me William E. Manner Notary Public in and for said county personally came the above named Joseph E. Nelson known to me to be the same person who executed the above dedication and acknowledged the same to be his free act and deed as such trustee

William E. Manner NOTARY PUBLIC  
My commission expires March 27, 1928

### DESCRIPTION OF LAND PLATTED

The land embraced in the annexed plat of LAKE COUNTRY MICH is described as follows:  
Commencing at a point S88 1/2° E 132 ft from S 1/4 post of Sec 34 on township line T18N R13W, hence N 1/2 E 265.7 ft hence N88 1/2° W 132 ft hence S 1/2 W 1733 ft to RC. of curve hence Southwestly on S 1/2 W 1733 ft hence S88 1/2° E 608.7 ft hence S 1/2 W 603 ft hence Southwesterly on S 1/2 W 244 ft to P.T. of curve hence S88 1/2° E 423 ft to point of beginning.

### SURVEYORS CERTIFICATE

I hereby certify that the plat hereon delineated is a correct one and that permanent metal monuments of not less than one inch in diameter and fifteen inches in length set in a concrete base of not less than four inches in diameter and four-eighths inches in length have been planted at all points marked thus (P) on the map shown in all angles of the boundaries of the land platted, at all intersections of streets, intersections of alleys and streets and at all intersections of streets and alleys with the boundaries of the land platted as shown on said plat.

William E. Manner REG. SURVEYOR

SURVEYED & PLATTED  
by  
George H. Johnson Reg. Sur.  
Baldwin Michigan

### COUNTY TREASURERS CERTIFICATE

Office of County Treasurer, Baldwin Michigan  
I hereby certify that there are no tax liens or titles held by the STATE on the land described in the annexed plat and that there are no tax liens or titles held by individuals on said lands for the five years preceding the 31 day of September 1927 and that the taxes for said period of five years are all paid as shown by the records of this office.

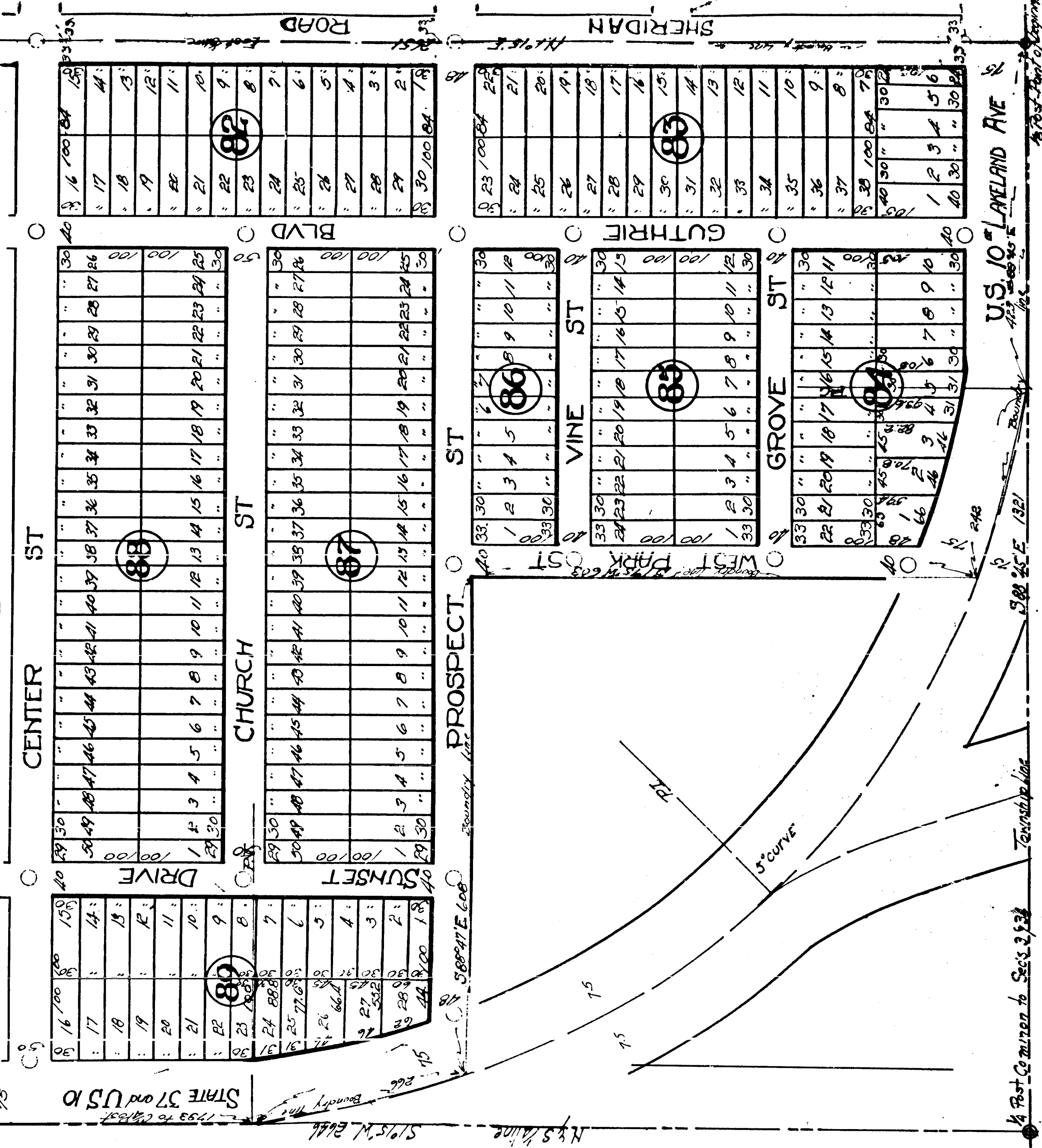
DATED at Baldwin this 3 day of October 1927  
CERTIFICATES OF APPROVALS

### MUNICIPAL

This plat was approved by the Twp Board of the Twp of Washtenaw at a meeting held on the 30 day of September 1927

COUNTY BOARD  
This plat was approved on the 12 day of October 1927  
Francis J. Keat JUDGE OF PROBATE  
Emil Johnson COUNTY CLERK  
William E. Manner COUNTY TREASURER

STATE HIGHWAY COMMISSIONER  
Examined and approved on the 12 day of October 1927  
Frank J. Rogers - SIGNED



SCALE  
1 INCH = 100 FEET  
All dimensions are in feet or decimals thereof.

Wm. E. Manner  
Subscribed & sealed  
1927  
Notary Public  
Emil Johnson

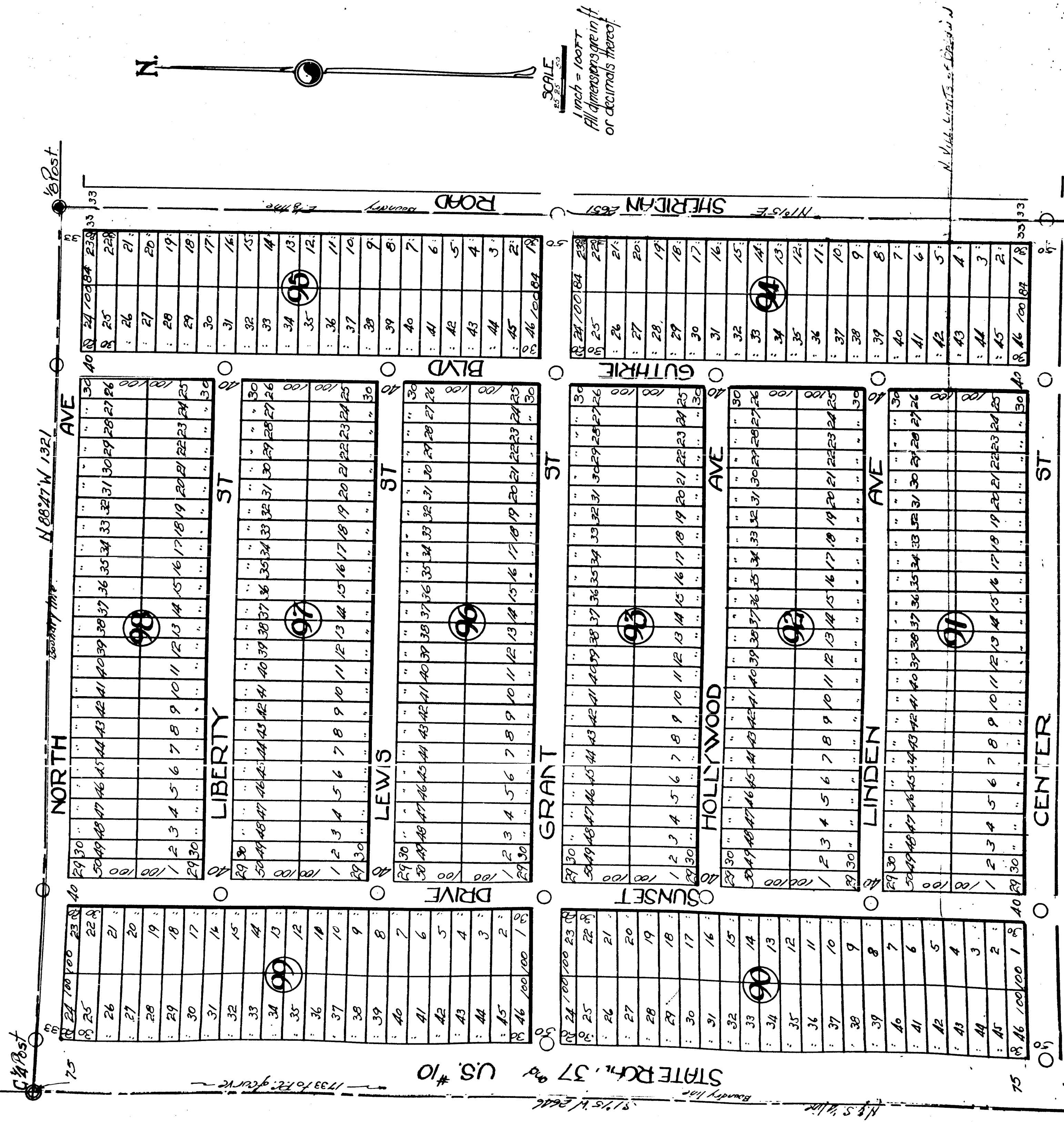
Oct 14 1927  
Wm. E. Manner

Oct 20 - 1927  
Wm. E. Manner



# LAKELAND ACRES NO 3

SHEET NO 2  
Included in 2 sheets



N. 1/4 Sec. 5, T. 5 N., R. 10 W.