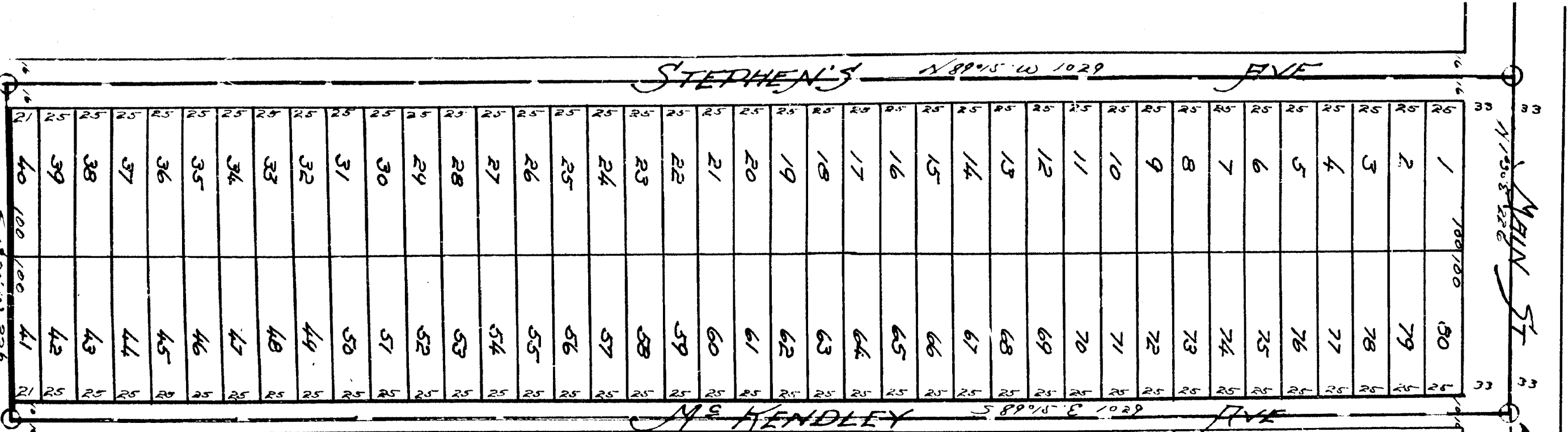


# "BLASS' BARREN"

(Part of the NW 1/4 of NW 1/4 Sec. 4 T17N12E)  
 Lake County Mich

NOTE - For correction of print  
 5' 10" to 5' 11" 1/2  
 1944-1949

Point of beginning  
 100' 00" by 100' 00"  
 5' 10" by 5' 11" 1/2  
 5' 10" by 5' 11" 1/2  
 5' 10" by 5' 11" 1/2



**DEDICATION**

KNOW ALL MEN BY THESE PRESENTS  
 That I George Blass, a widower as  
 proprietor have caused the land  
 embraced in the above named plat to  
 be surveyed, laid out and divided  
 to be known as "BLASS' BARREN"  
 Part of the NW 1/4 of the NW 1/4  
 Sec 4 T17N12E W. 12E. County  
 Lake and that the streets, alleys  
 and parks as shown on said plat  
 are hereby dedicated to the use  
 of the public

Signed and sealed  
 in presence of  
 J. E. Payne, J. E. ...  
 State of Michigan } s.s.  
 County of Lake

On this 13<sup>th</sup> day of August 1924  
 before me, J. E. Payne, Notary Public,  
 personally came the above named  
 George Blass, a widower known to  
 me to be the same person who  
 executed the above dedication  
 and acknowledged the same to be  
 his free act and deed as such  
 proprietor

My commission expires  
 July 11, 1931  
 J. E. Payne, Notary Public

Surveyed and Platted  
 Geo. H. Johnson, Registrar  
 Baldwin Michigan

**CERTIFICATES OF APPROVAL**

**MUNICIPAL**  
 This plat was approved by the township of the township of  
 meeting held on the 11<sup>th</sup> day of August 1924  
 Blanchard W. ...  
 Township Clerk

**COUNTY BOARD**  
 This plat was approved on the day of August 1924

Robert Toops  
 County Treasurer  
 Stanley ...  
 County Clerk

**SURVEYOR'S CERTIFICATE**  
 I hereby certify that the plat herein  
 delineated is a correct one and that  
 permanent metal monuments  
 consisting of 1" iron pipe 15" long bedded  
 in a concrete base 4" in diameter and  
 48 inches in length have been placed  
 at all points marked thus (O) as  
 thereon shown in all angles in the  
 boundaries of the land plotted;  
 intersection of streets, of alleys;  
 intersection of streets and alleys and  
 streets and alleys with the boundaries  
 of the land plotted

**DESCRIPTION OF LAND PLATTED**  
 The land embraced in the above  
 plat of "BLASS' BARREN" is  
 described as follows:  
 Beginning at a point 5' 10" by 5' 11" 1/2  
 of Sec. 4, T17N12E W. 12E. Mich  
 thence 589' 15" E 102° 27' 1/2" thence 5' 10" W  
 226' thence 589' 15" E 102° 27' 1/2" thence N 1/2  
 226' to point of beginning.

**COUNTY TREASURER'S CERTIFICATE**  
 Office of County Treasurer Lake County Mich  
 I hereby certify that there are no tax  
 liens or titles held by the state on the  
 lands described above and that there  
 are no tax liens or titles held by  
 individuals on said lands for the five  
 years preceding the 13<sup>th</sup> day of  
 August 1924 and that the taxes  
 for said period of five years are paid  
 as shown by the records of this office  
 Dated at Gary Mich  
 this 13<sup>th</sup> day of August 1924  
 J. E. Payne, County Treasurer

Mark ...  
 29 9  
 1927  
 County ...

SCALE = 25 feet  
 dimensions are 10 feet on  
 diagonals hereof

