

RICHMOND ACRES

PART OF NE 1/4 - NW 1/4 SEC. 33 T20N R14W

ELK TOWNSHIP
LAKE CO., MICH.

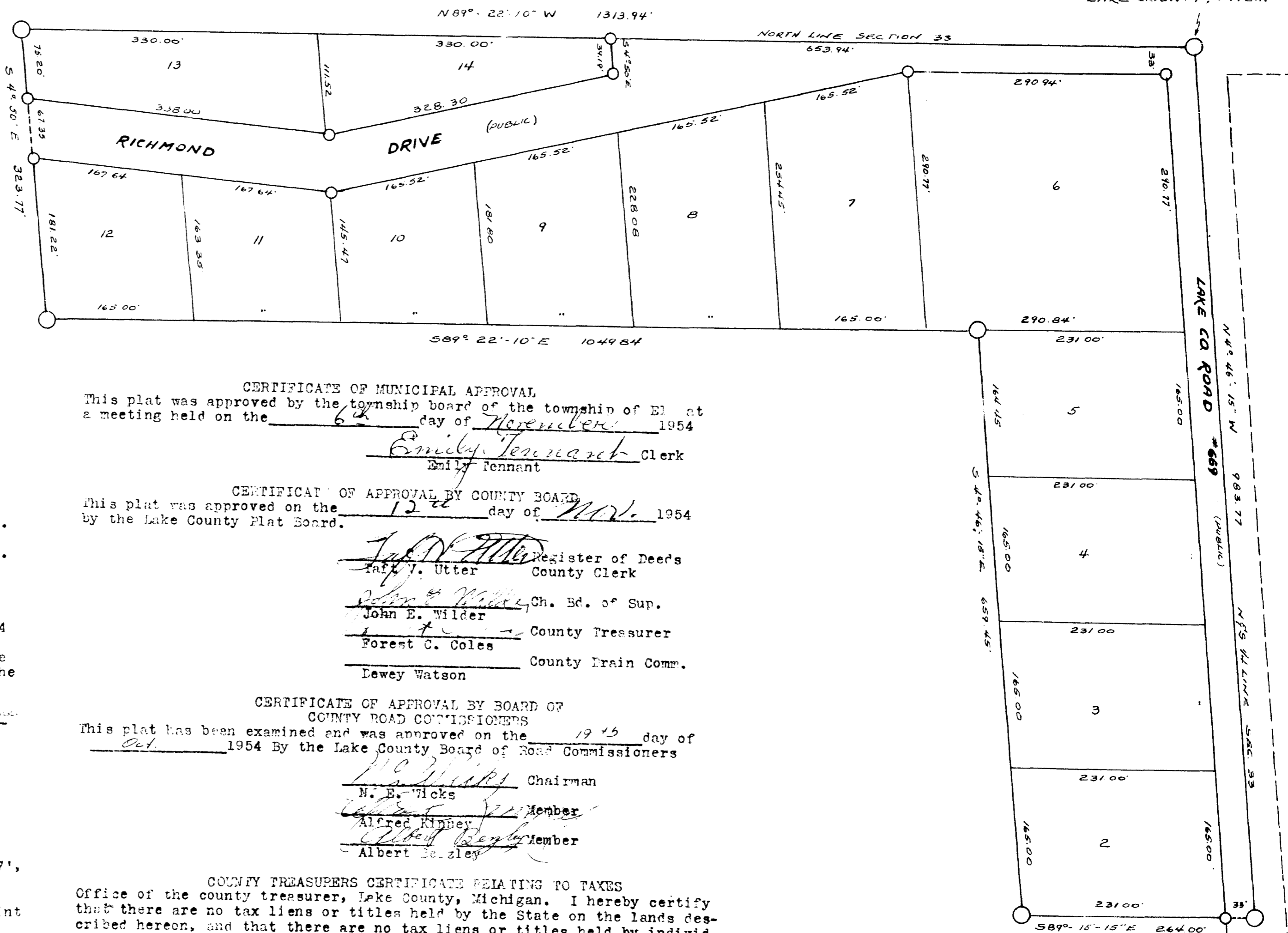
SCALE 1 INCH = 100 FEET

COPY
Register's Office
Lake County, Mich.
Part of Richmond (herein)
and Township
was hereof filed the 12th day of
December, A.D. 1954 at 7 o'clock
A.M. in Book 35 of Plat
Page 304
Joseph T. Utter
Register of Deeds

Received of the following
Date Received \$2,148.00
By Lake County Treasurer
Date Received 10, 1954
By Treasurer
Date Received 12, 1954
John B. Mott
Auditor General
D. L. MacFarland
Professional Engineer

SURVEYORS CERTIFICATE
I hereby certify that the plat hereon delineated is a correct one and that permanent monuments consisting of iron bars one-half inch in diameter and 48 inches in length, incased in a concrete cylinder 4 inches in diameter and 48 inches in length have been placed at points marked thus (e) as thereon shown at all angles in the boundaries of the land platted, at all angles in roads and drives and at the intersections of all roads and drives with the boundaries of the lands platted, as shown on said plat.

George Bliss #5489
George Bliss



POINT OF BEGINNING
N 1/4 COR. SECTION 33
T20N R14W 1/4 TWP
LAKE COUNTY, MICH.

DEDICATION
Know all men by these presents, that we Albert Richmond as proprietor, and Myrtle P. Richmond his wife, have caused the land embraced in the annexed plat to be surveyed, laid out and platted, to be known as "RICHMOND ACRES", part of NE 1/4 - NW 1/4 of section 33, T20N R14W, Elk township, Lake County, Michigan, and that the drives and roads as shown on said plat are hereby dedicated to the use of the public.

Signed and sealed in the presence of:

George Bliss
Albert Richmond L.S.
Myrtle P. Richmond L.S.

STATE OF MICHIGAN,)
COUNTY OF LAKE,) SS On this 12th day of Nov. 1954
before me, a notary public in and for said county, personally came the
above named Albert Richmond and Myrtle P. Richmond his wife, known to me
to be the persons who executed the above dedication, and acknowledged the
same to be their free act and deed.

My Commission expires Dec 27 1954
George Bliss Notary Public, Lake Co., Mich.

DESCRIPTION
The land embraced in the annexed plat of "RICHMOND ACRES" part of NE 1/4 - NW 1/4 of section 33, T20N R14W, Elk township, Lake County, Michigan, is described as follows:
Beginning at the NE corner of said section 33, thence N89°-22'-10"W along the north line of said section 33, 1313.94', thence S4°-50'-15"E 323.77', thence S89°-22'-10"E 1049.84', thence S4°-46'-15"E 659.45', thence S29°-15'-15"E 264.00' to the north and south 1/4 line of said section 33, thence N4°-46'-15"W along said north and south 1/4 line 983.77' to the point of beginning.

CERTIFICATE OF MUNICIPAL APPROVAL
This plat was approved by the township board of the township of Elk at a meeting held on the 6th day of November 1954
Emily Tennant Clerk

CERTIFICATE OF APPROVAL BY COUNTY BOARD
This plat was approved on the 12th day of Nov. 1954
by the Lake County Plat Board.

Joseph T. Utter Register of Deeds
County Clerk
John E. Wilder Ch. Bd. of Sup.
County Treasurer
Forest C. Coles County Train Comm.
Dewey Watson

CERTIFICATE OF APPROVAL BY BOARD OF COUNTY ROAD COMMISSIONERS
This plat has been examined and was approved on the 19th day of Oct. 1954 By the Lake County Board of Road Commissioners

M. E. Ticks Chairman
Alfred Kinney Member
Albert Seitzley Member

COUNTY TREASURERS CERTIFICATE RELATING TO TAXES
Office of the county treasurer, Lake County, Michigan. I hereby certify that there are no tax liens or titles held by the State on the lands described hereon, and that there are no tax liens or titles held by individuals on said lands, for the five years preceeding the 12th day of Nov. 1954 and that the taxes for said period of five years are paid, as shown by the records of this office.
This certificate does not apply to taxes, if any, now in the process of collection by township, or county collecting officers.

Forest C. Coles County Treasurer

35782