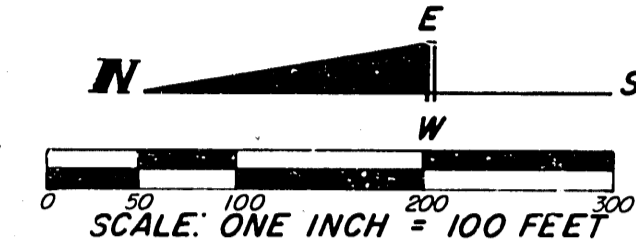


"Deer Lake Estates Subdivision"

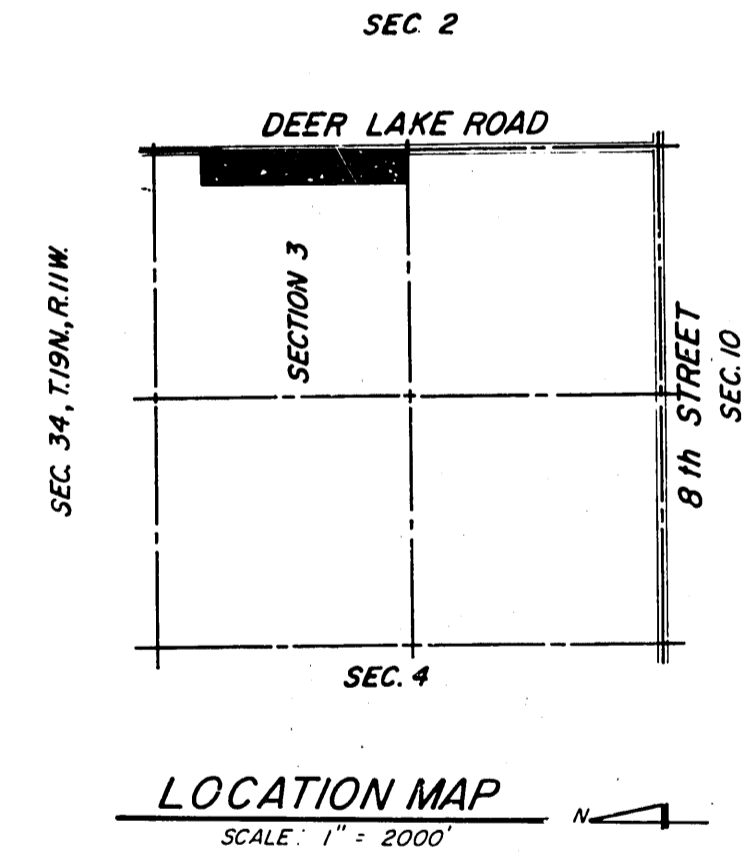
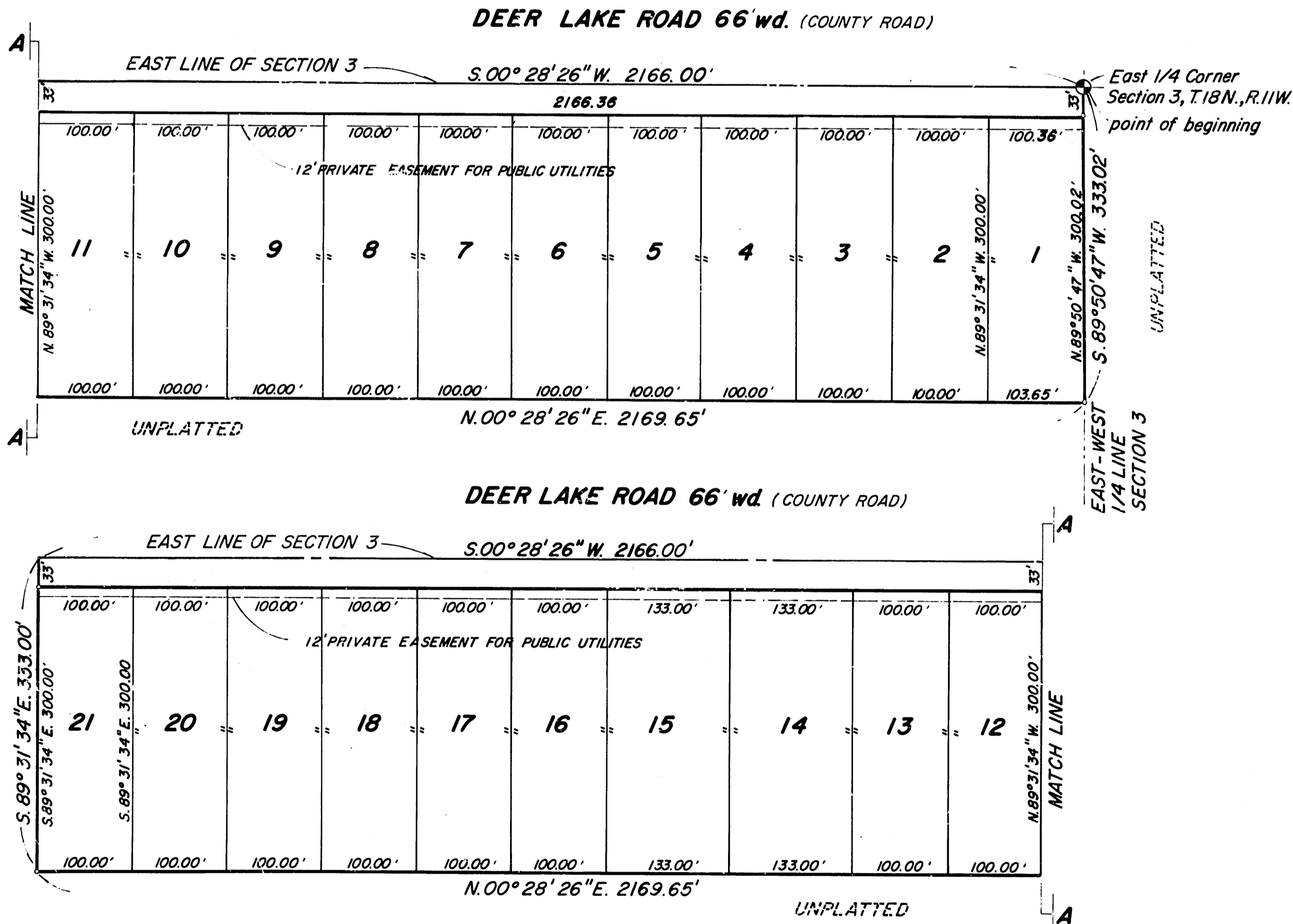
This plat is subject to restrictions as required by Act 288 of 1907, as amended on certain lots with respect to the requirements of the Michigan Department of Natural Resources and/or the Michigan Department of Public Health, which are recorded in Liber 121, Page 406-09 of records of this county.

PART OF THE NORTHEAST 1/4 OF SECTION 3, T.18N., R.11W.,
PINORA TOWNSHIP, LAKE COUNTY, MICHIGAN



LEGEND

1. ALL DIMENSIONS ARE IN FEET.
2. CONCRETE MONUMENTS HAVE BEEN PLACED AT ALL POINTS MARKED "O".
3. LOT CORNERS HAVE BEEN MARKED WITH 1/2 INCH DIAMETER IRONS, 18 INCHES IN LENGTH.
4. BEARINGS WERE ESTABLISHED BY SOLAR OBSERVATION.



54085

Nowak & Fraus Corp.
CIVIL ENGINEERS LAND SURVEYORS
1024 N. WOODWARD AVE. ROYAL OAK, MICH. (48067) TEL. (313) 393-0866

"Deer Lake Estates Subdivision"

PART OF THE NORTHEAST 1/4 OF SECTION 3, T.18N., R.11W.
PINORA TOWNSHIP, LAKE COUNTY, MICHIGAN

CERTIFICATE OF COUNTY ROAD COMMISSIONERS

Approved on SEPT 20, 1973 as complying with Section 183 of Act 288, P. A. 1967 and the applicable published rules and regulations of the Board of Road Commissioners of Lake County.

Alfred Kinney
Alfred Kinney

Albert Berzley
Albert Berzley

N. E. Wicks
N. E. Wicks, Chairman

CERTIFICATE OF MUNICIPAL APPROVAL

I certify that this plat was approved by the Township Board, of the Township of Pinora, at a meeting held September 25, 1973 and was reviewed and found to be in compliance with Act 288, P. A. of 1967. The District Health Department No. 5, Lake, Newaygo, and Oceana Counties, has approved the preliminary plat on March 26, 1973, and the proprietors of the subdivision have been required to comply with Section 192 of Act 288, P. A. of 1967.

Lewis Bowman
Lewis Bowman, Clerk

COUNTY PLAT BOARD CERTIFICATE

This plat has been reviewed and is approved by the Lake County Plat Board on 12-6-73 as being in compliance with all of the provisions of Act 288, P. A. 1967, and the Plat Board's applicable rules and regulations.

Lucinda K. Keefer
Lucinda K. Keefer,
County Clerk
Register of Deeds

Leo LaPointe
Leo LaPointe
Chairman,
Board of Commissioners

Ruth J. Updegraff
Ruth J. Updegraff,
County Treasurer

RECORDING CERTIFICATE

State of Michigan)
) S. S.
Lake County)

Richard E. Lamon
February 5, 1974

This plat was received for record on the 24th day of JANUARY, 1974 at 9:00 AM, and recorded in Liber 5 of Plats on Pages 31, 32, 33.

Lucinda K. Keefer 151
Lucinda K. Keefer, Register of Deeds

COUNTY TREASURER'S CERTIFICATE

The records in my office show no unpaid taxes or special assessments for the five years preceding Sept 12, 1973; involving the lands included in this plat.

Ruth J. Updegraff
Ruth J. Updegraff - County Treasurer
Lake County, Michigan

PROPRIETOR'S CERTIFICATE - CORPORATION

Wilder Land Inc., a corporation duly organized and existing under the laws of the State of Michigan by, Elmond J. Gerondale, President, and John R. Wilson, Secretary, as proprietor, has caused the land to be surveyed, divided, mapped and dedicated as represented on this plat and that the streets are for the use of the public; that the public utility easements are private easements and that all other easements are for the uses shown on the plat.

Wilder Land Inc.
34629 Michigan Avenue
Wayne, Michigan 48184

Witness:

John R. Wilder
JOHN R. WILDER

Elmond J. Gerondale
Elmond J. Gerondale, President

Kathleen M. Devine
KATHLEEN M. DEVINE

John R. Wilson
John R. Wilson, Treasurer

ACKNOWLEDGEMENT

State of Michigan)
) S. S.
Wayne County)

Personally came before me this 7th day of August, 1973, Elmond J. Gerondale, President, and John R. Wilson, Secretary of the above named corporation, to me known to be the persons who executed the foregoing instrument, and to me known to be such President and Secretary of said corporation, and acknowledged that they executed the foregoing instrument as such officers as the free act and deed of said corporation, by its authority.

Notary Public, Kathleen M. Devine Wayne County, Michigan
KATHLEEN M. DEVINE

My Commission expires October 20th, 1975

Nowak & Fraus Corp.
CIVIL ENGINEERS LAND SURVEYORS
1024 N. WOODWARD AVE. ROYAL OAK, MICH. (48067) TEL. (313) 399-0886
54085