

# PERE MARQUETTE RIVER COLONY

Part of the NE 1/4 of the SW 1/4, Sec. 16, T17N, R13W

LAKE COUNTY, MICHIGAN.

Approved and filed  
May 28-1926  
J. E. Hume

### DEDICATION

KNOW ALL MEN BY THESE PRESENTS: That  
WE, FRED W. BARN AND CARL TRITTEBER,  
AS PROPRIETORS HAVE CAUSED THE LANDS EMPLOYED  
and platted to be known as PERE MARQUETTE  
RIVER COLONY, part of the NE 1/4 of the SW 1/4 of  
Sec. 16, T17N, R13W of Lake County, Michigan.  
and that the streets and parts of the same  
shown on the plat are dedicated to the use of the  
public, which is decided by the use of the public.  
Signed and Sealed  
Fred W. Barn  
Carl Tritteber  
Notary Public  
State of Michigan  
County of Kent

On this 19 day of May A.D. 1926  
before me a Notary Public in and for said  
County, personally appeared the above named  
Fred W. Barn and Carl Tritteber  
and they acknowledged to me that they  
had signed and sealed the foregoing plat and  
said certificate of dedication, and that they  
knew the contents of the same and that the  
said certificate and instrument to be the free and  
voluntary act and deed  
of said corporations.  
Notary Public  
My Commission expires July 22, 1927.

### SURVEYOR'S CERTIFICATE

I hereby certify that the plat hereon delin-  
ed is a correct one and that the same is  
correctly surveyed and platted. I have seen  
the ground on which the same is shown and  
I find that the same is correctly surveyed and  
platted and that the same is correctly shown  
on the plat and that the same is correctly  
shown on the plat and that the same is  
correctly surveyed and platted.  
Registered Surveyor  
J. E. Hume

### COUNTY TREASURER'S CERTIFICATE

Office of the County Treasurer of Lake County,  
I hereby certify that there are no taxes or  
other charges due on the land hereon shown  
and that the same is correctly surveyed and  
platted and that the same is correctly shown  
on the plat and that the same is correctly  
surveyed and platted.  
County Treasurer  
J. E. Hume

### DESCRIPTION OF LAND PLATTED

The land embraced in the annexed plat of  
the PERE MARQUETTE RIVER COLONY, part of the  
NE 1/4 of the SW 1/4 of Sec. 16, T17N, R13W, Lake Co.,  
Mich., is shown on the plat as follows: (1) A strip of  
land 1/2 mile wide and 1/4 mile long, bounded  
on the north by the center of the Pere Marquette  
River, on the south by the center of the  
River, on the east by the center of the  
River, and on the west by the center of the  
River. (2) A strip of land 1/2 mile wide and  
1/4 mile long, bounded on the north by the  
center of the River, on the south by the  
center of the River, on the east by the  
center of the River, and on the west by the  
center of the River. (3) A strip of land 1/2  
mile wide and 1/4 mile long, bounded on the  
north by the center of the River, on the  
south by the center of the River, on the  
east by the center of the River, and on the  
west by the center of the River.

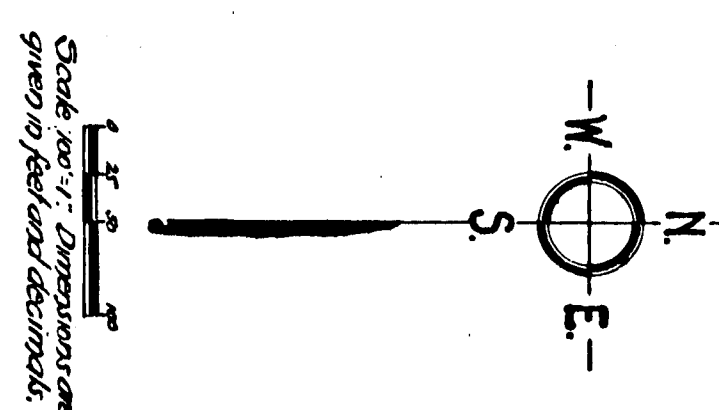
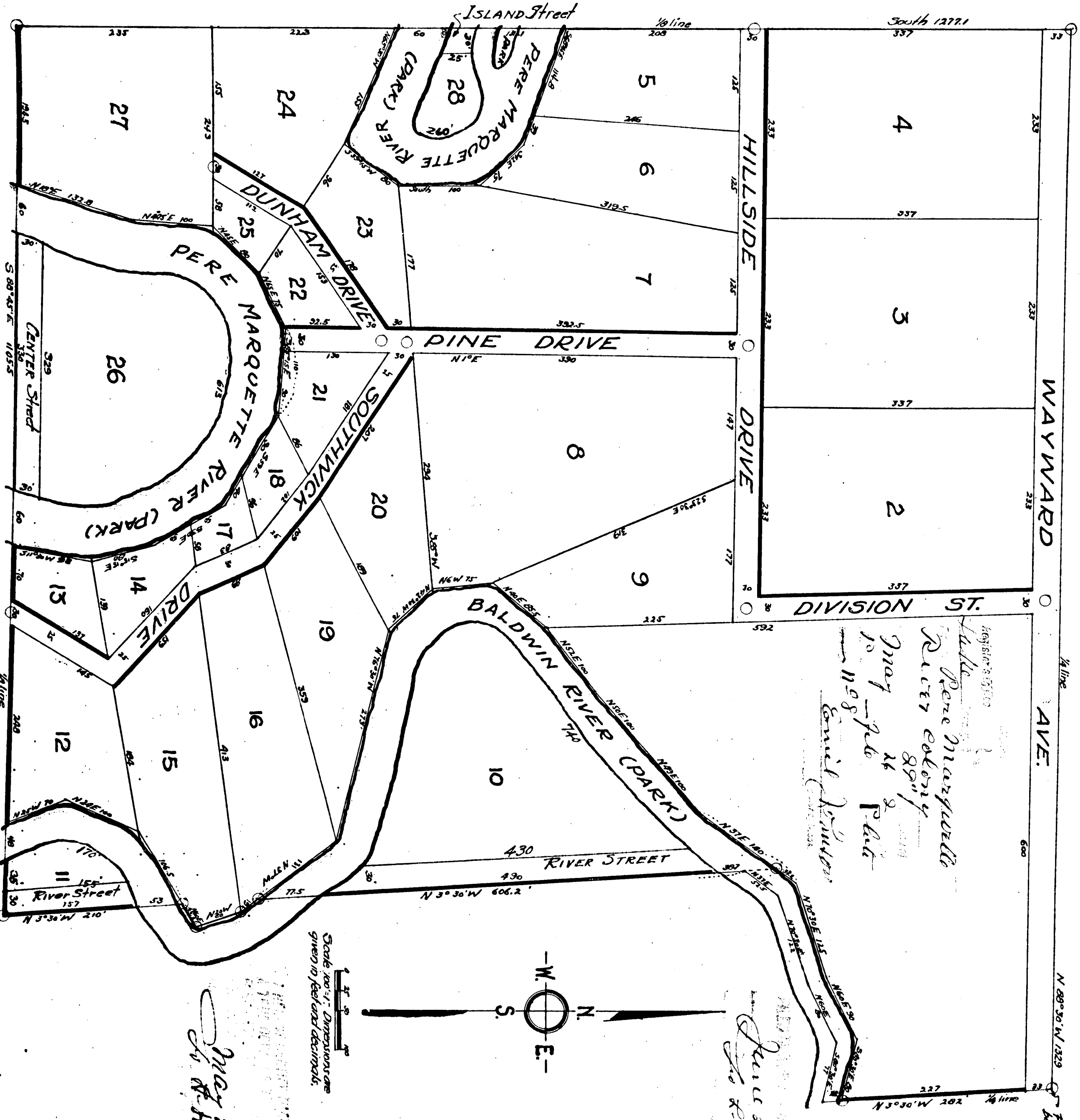
### CERTIFICATES OF APPROVAL

MUNICIPAL: This plat was approved by the  
platted public on the 15th day of May, 1926.  
Approved by the  
Township Clerk  
County Clerk  
County Treasurer

COUNTY BOARD: This plat was approved as  
the 23rd day of May, 1926.  
Approved by the  
County Clerk  
County Treasurer

Table  
Pere Marquette  
River Colony  
May - 1st  
to  
Nov - 1st  
1926  
Emil Lindner  
County Treasurer

June 2-1926  
Geo. H. Hume



Surveyed & Platted  
Geo. H. Hume, Reg. Sur.  
Baldwin, Mich.  
May 28-1926  
J. E. Hume

