

MARRQUETTE SPRINGS

46197

PART OF THE N/2 SECTION 24
T17N R12W YATES TWP. LAKE CO., MICHIGAN

SHELL 1 CR + 1 FEET

DEDICATION:

Know all men by these presents, that we Norman J. Gotschall and Vaneta J. Gotschall, his wife, have caused the land embraced in the annexed plat to be surveyed, laid out and platted, to be known as "MARQUETTE SPRINGS" part of the K 1/2 section 24, T17N R12W Yates Twp., Lake County, Michigan, and that the streets are private and are hereby dedicated to the use of the lot owners in said plat.

Signed and Sealed
In the presence of:

George Blass Witness
George Blass

Norman J. Gotschall J.S.
Norman J. Gotschall

Vaneta J. Gotschall Witness
Vaneta J. Gotschall

State of Michigan) ss
County of Lake

On this 19th day of July, 1963, before me, a Notary Public in and for said county, personally came the above named Norman J. Gotschall and Vaneta J. Gotschall, his wife, known to me to be the persons who executed the above dedication, and acknowledged the same to be their free act and deed.

My Commission expires
December 3, 1968.

George Blass
George Blass
Notary Public Lake Co., Mich.

SUBDIVISIONS OF PLATS:

I hereby certify that the plat herein delineated is a correct one and that permanent metal monuments consisting of bars not less than one-half inch in diameter and thirty-six inches in length, encased in concrete cylinders at least four inches in diameter and thirty-six inches in depth, have been placed at all points marked thus (o) as thereon shown at all angles in the boundaries of the land platted, and at all intersections of streets, and at all intersections of streets with the boundaries of the plat as shown on said plat.

George Blass J.S.
George Blass J.S. No. 5489

DESCRIPTION:

The land embraced in the annexed plat of "MARQUETTE SPRINGS" part of the K 1/2 section 24, T17N R12W, Yates Twp., Lake Co., Michigan is described as beginning at a point on the north line of said sec. 24 S88°01'30"W 33.00 feet from the north-west cor. of said sec. 24, thence S1°31'10"W parallel with the west line of said sec. 24 160.60 feet, thence S84°27'40"W 131.32 feet, thence S10°44'10"W 236.00 feet, thence S73°58'10"W 173.63 feet, thence S12°43'10"W 168.85 feet, thence S69°38'40"W 341.84 feet, thence N50°22'20"W 268.15 feet, thence N1°51'00"W 130.20 feet, thence N40°06'10"W 254.40 feet, thence S55°39'00"W 215.14 feet, thence N79°56'10"W 277.72 feet, thence S56°55'30"W 352.95 feet, thence S10°57'50"W 245.90 feet, thence S81°41'40"W 131.05 feet, thence S24°01'20"W 951.65 feet, thence S13°20'00"W 358.50 feet, thence S54°05'50"W 124.52 feet, thence N27°36'30"W 101.35 feet, thence S60°31'50"W 150.40 feet, thence S26°49'30"W 118.95 feet, thence S79°05'20"W 538.50 feet, thence N27°21'40"W 142.10 feet, thence S76°43'30"W 342.47 feet, thence S19°50'50"W 147.70 feet, thence N73°35'30"W 240.65 feet, thence S33°43'20"W 144.75 feet, thence S66°20'30"W 207.31 feet, thence N33°43'40"W 103.81 feet, thence N74°09'10"W 428.85 feet, thence N26°26'40"W 71.44 feet, thence N76°48'00"W 197.00 feet, thence N36°26'40"W 117.79 feet, thence S74°30'00"W 202.80 feet, thence N24°06'20"W 160.65 feet to the east line of said sec. 24, thence N1°30'20"W along said east line 443.68 feet, thence N88°09'20"W 1323.98 feet, thence N1°33'00"W 1314.17 feet, to the north line of said sec. 24, thence N88°01'30"W along said north line 33.10 feet to the point of beginning.

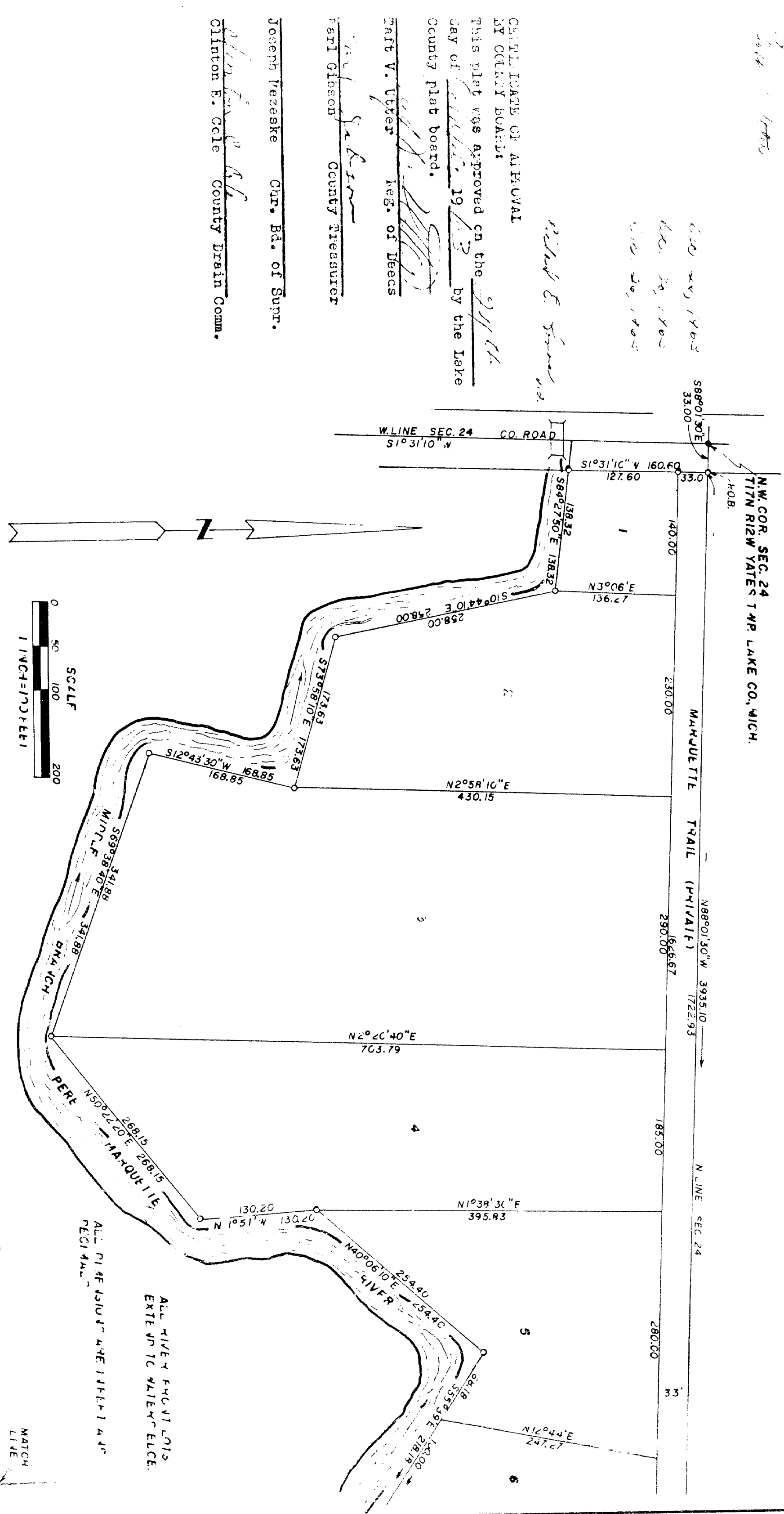
Plat contains a total of fifty (50) lots.

COUNTY TREASURER'S CERTIFICATE
ABSTRACT TO TAXES:

-----Office of county treasurer, Lake County-----
I hereby certify that there are no tax liens or titles held by the state on the lands herein described, and there are no tax liens or titles held by individuals on said lands, for the five years preceeding the 25 day of July, 1963 and that the taxes for said period of five years are paid, as shown by the records of this office.

This certificate does not apply to taxes, if any, now in the process of collection by township or county collector; officers

Earl Glinch County Treasurer

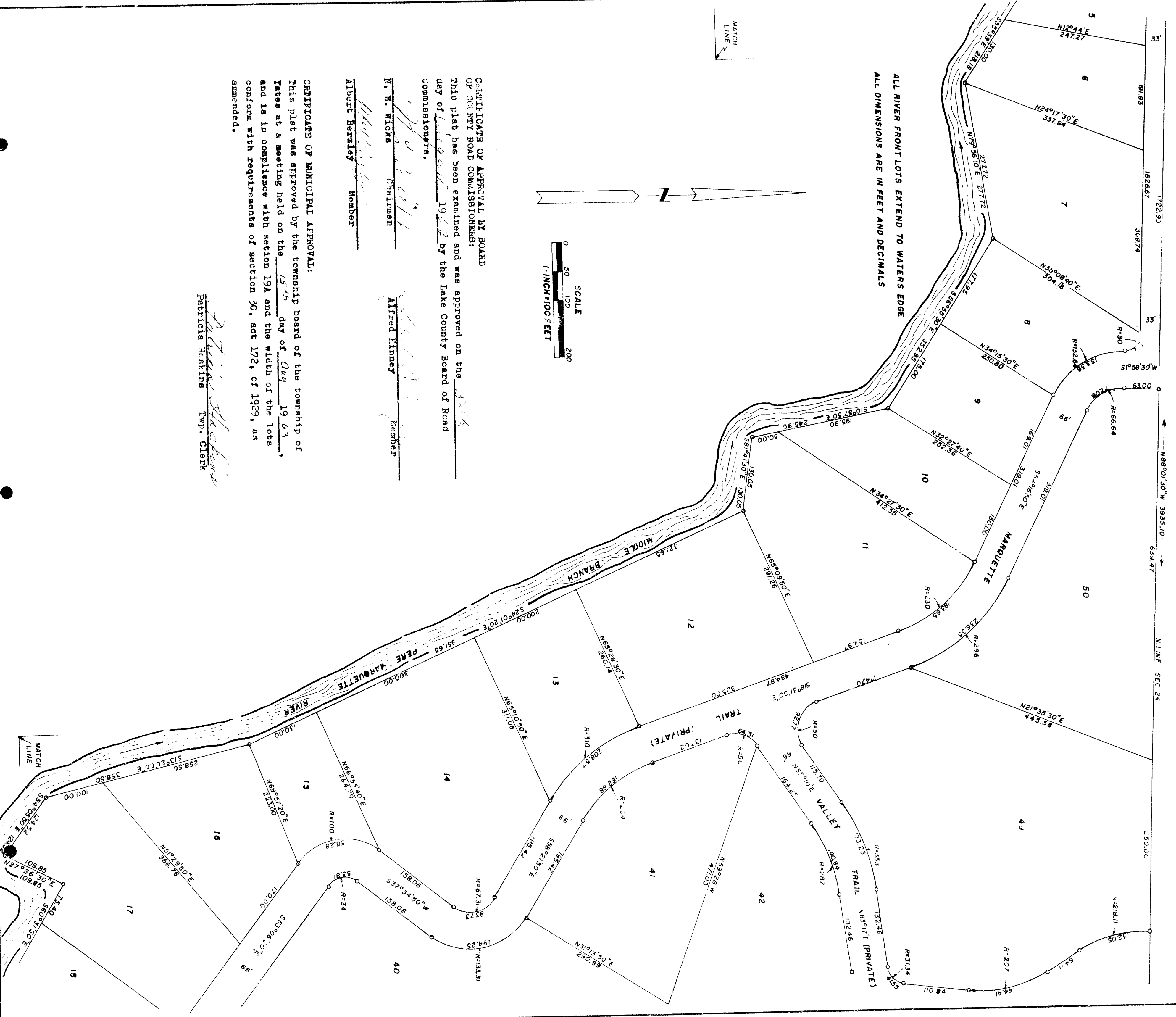


CERTIFICATE OF APPROVAL BY COUNTY BOARD:
This plat was approved on the 21st day of July, 1963 by the Lake County plat board.
Carl V. Utter Reg. of Deeds
Earl Glinch County Treasurer
Joseph Rezeske Dir. Bd. of Supr.
Clinton E. Cole County Drain Comm.

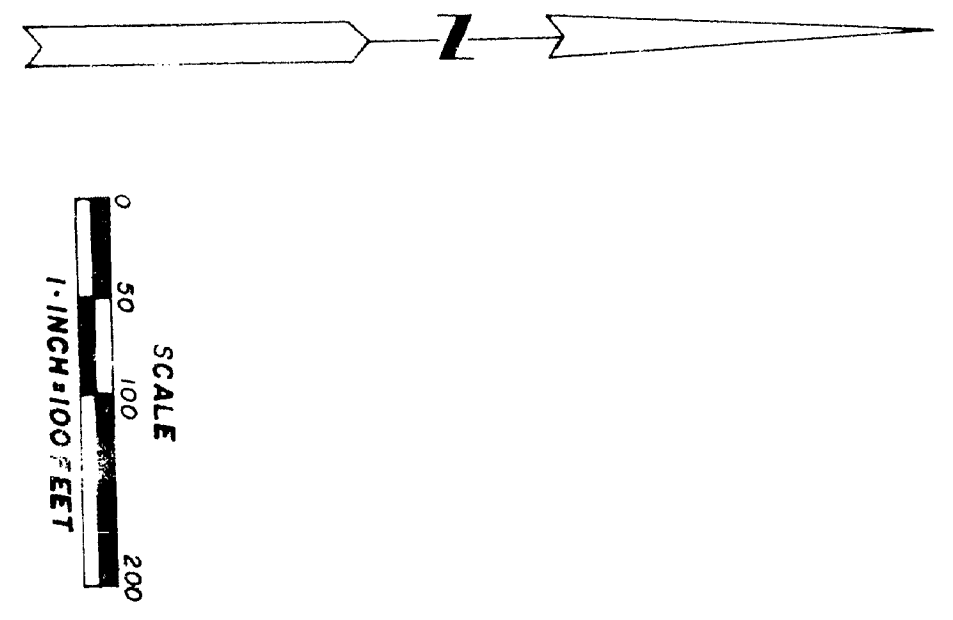
MARQUETTE SPRINGS

PART OF THE N/2 SECTION 24
T17N R12W YATES TOWNSHIP
LAKE CO., MICH.

SHEET 2 OF 4 SHEETS



ALL RIVER FRONT LOTS EXTEND TO WATERS EDGE
ALL DIMENSIONS ARE IN FEET AND DECIMALS



CERTIFICATE OF APPROVAL BY BOARD
OF COUNTY ROAD COMMISSIONERS:
This plat has been examined and was approved on the 15th
day of September 1927 by the Lake County Board of Road
Commissioners.

H. G. Wicks Chairman
Alfred Kinney Member
Albert Berzley Member

CERTIFICATE OF MUNICIPAL APPROVAL:
This plat was approved by the township board of the township of
Yates at a meeting held on the 15th day of July 1923,
and is in compliance with section 19A and the width of the lots
conform with requirements of section 30, act 172, of 1929, as
amended.

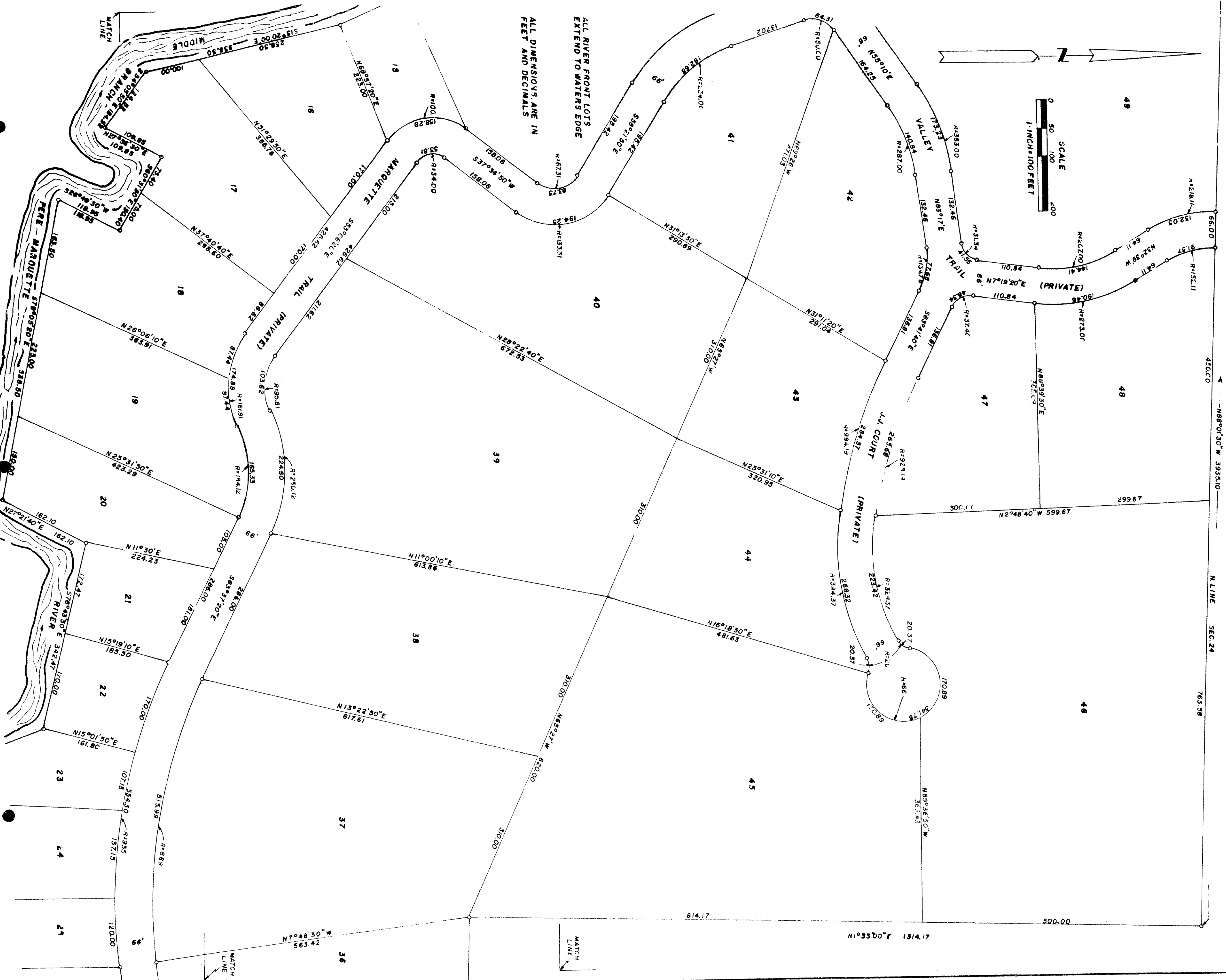
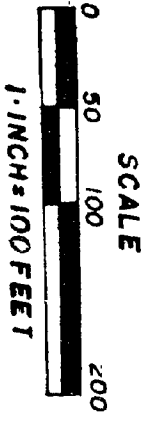
Patricia Haskins Twp. Clerk

MATCH LINE

MARQUETTE SPRINGS

PART OF THE N1/2 SECTION 24
T17N R12W YATES TOWNSHIP
LAKE CO., MICH.

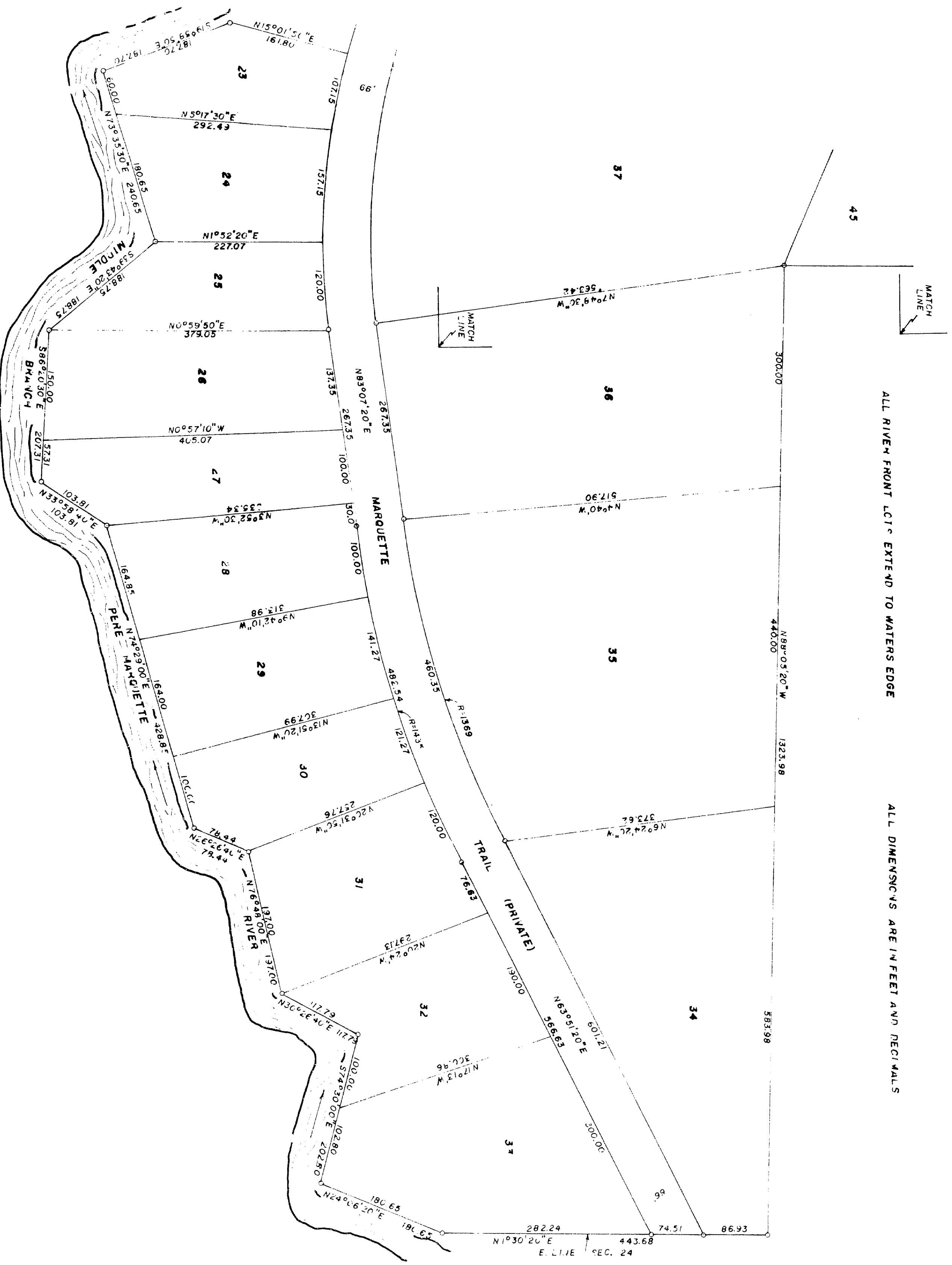
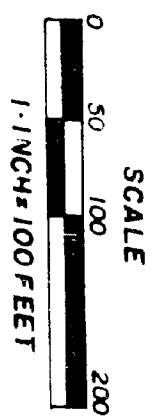
SHEET 3 OF 4 SHEETS



MARQUETTE SPRINGS

PART OF THE N/2 SECTION 24
T17N R12W YATES TOWNSHIP
LAKE CO., MICH.

SHEET 4 OF 4 SHEETS



ALL RIVER FRONT LOT'S EXTEND TO WATERS EDGE

ALL DIMENSICNS ARE IN FEET AND DECIMALS