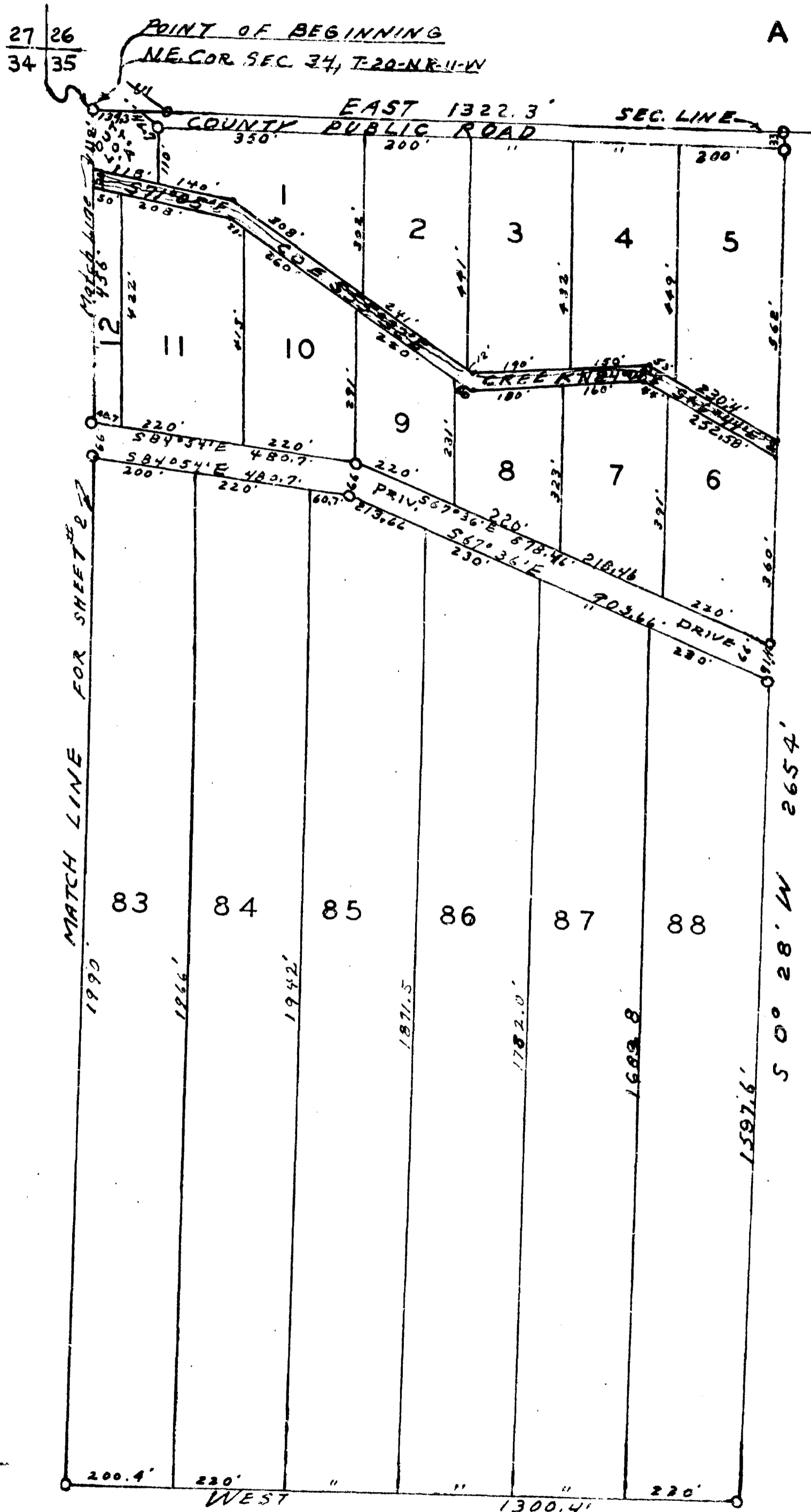


PINE RIVER HILLS

A PART OF SECTIONS 34 AND 35
DOVER TWP. T-20-N R-11-W,
LAKE COUNTY MICHIGAN.



DESCRIPTION OF LAND PLATTED

The land embraced in the annexed plat of Pine River Hills, a part of Section 34-35, Dover Township, T20N, R11W., Lake County, Michigan

is described as follows:
Beginning at the section corner at the N. E. corner of Sec. 34, Dover Township, thence E., a distance of 1322.30 ft.; thence S. 0° 28' W., a distance of 2654.00 ft.; thence W., a distance of 1300.40 ft.; thence S., a distance of 2640.00 ft.; thence W., a distance of 2642.90 ft.; thence N. 0° 36' E., a distance of 4168.00 ft.; thence N. 32° 28' E., a distance of 1337.24 ft.; thence E., a distance of 1878.00 ft. to the point of beginning. This plat embraces 88 lots and one outlet which is dedicated to the use of all of the lot owners. All dimensions are in feet and decimals thereof.

MUNICIPAL APPROVAL

This plat was approved by the Dover Township Board of the Dover Township of Dover at a meeting held 1956 by Marguerite Robertson (Clark)

APPROVAL BY COUNTY PLAT BOARD

This plat was approved on the 13th day of March, 1956 by Taft V. Utter (County Register of Deeds), John E. Wilder (Chairman Bd. of Suprs.), and Forest C. Coles (County Treasurer)

APPROVAL BY BOARD OF COUNTY ROAD COMMISSIONERS

This plat has been examined and was approved on the 3rd day of March, 1956 by the Lake County Board of Road Commissioners: Nelson E. Wicks (Chairman), Alfred Kinney (Member), and Albert Berzley (Member)

DEDICATION

KNOW ALL MEN BY THESE PRESENTS, that we PORTER - MULDER LAND COMPANY

Michigan corporation by Harold Mulder President, and Gerald A. Derks Secretary as proprietor, have caused the land embraced in the annexed plat to be surveyed, laid out and platted to be known as Pine River Hills, a part of Sections 34-35, Dover Twp., T20N, R11W., Lake County, Michigan

and that the streets, drives and outlet "A" as shown on said plat are hereby dedicated to the lot owners. County roads are dedicated to the use of the public.

Signed and Sealed in the Presence of: Porter-Mulder Land Company
Kenneth E. Fable (Witness) Harold Mulder President
Kenneth E. Fable (Witness) Gerald A. Derks
Monia D. Carlson (Witness)

ACKNOWLEDGMENT

STATE OF Michigan County of Muskegon
On this 9th day of August, A.D. 1956, before me Kenneth E. Fable a Notary Public in and for said county appeared Harold Mulder and Gerald A. Derks President and Secretary respectively of the PORTER - MULDER LAND COMPANY a Michigan corporation, and that the seal affixed to said instrument is the corporate seal of said corporation and that said instrument was signed and sealed in behalf of said corporation by authority of its Board of Directors and the said Harold Mulder and Gerald A. Derks acknowledged said instrument to be the free act and deed of said corporation.

Kenneth E. Fable Notary Public, Muskegon County
My Commission expires February 1, 1958

SURVEYOR'S CERTIFICATE

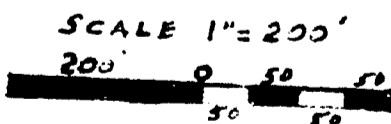
I hereby certify that the plat hereon delineated is a correct one and that permanent metal monuments consisting of bars not less than one-half inch in diameter and 48 inches in length, or shorter bars of not less than one-half inch in diameter lapped over each other at least 6 inches with an over-all length of not less than 48 inches, encased in a concrete cylinder at least 4 inches in diameter and 48 inches in depth have been placed at points marked thus (.....) as thereon shown at all angles in the boundaries of the land platted, at all the intersections of streets, intersections of alleys, or of streets and alleys, and at the intersections of streets and alleys with the boundaries of the plat as shown on said plat.

W. H. Wright Registered Land Surveyor or Registered Professional Engineer

COUNTY TREASURER'S CERTIFICATE

Office of County Treasurer, Lake County.
I hereby certify, that there are no tax liens or titles held by the State on the lands described hereon, and that there are no tax liens or titles held by individuals on said lands, for the five years preceding the 1st day of August, 1956; and that the taxes for said period of five years are all paid, as shown by the records of this office

This certificate does not apply to taxes, if any, now in process of collection by township, city or village collecting officers.
Forest C. Coles (County Treasurer)



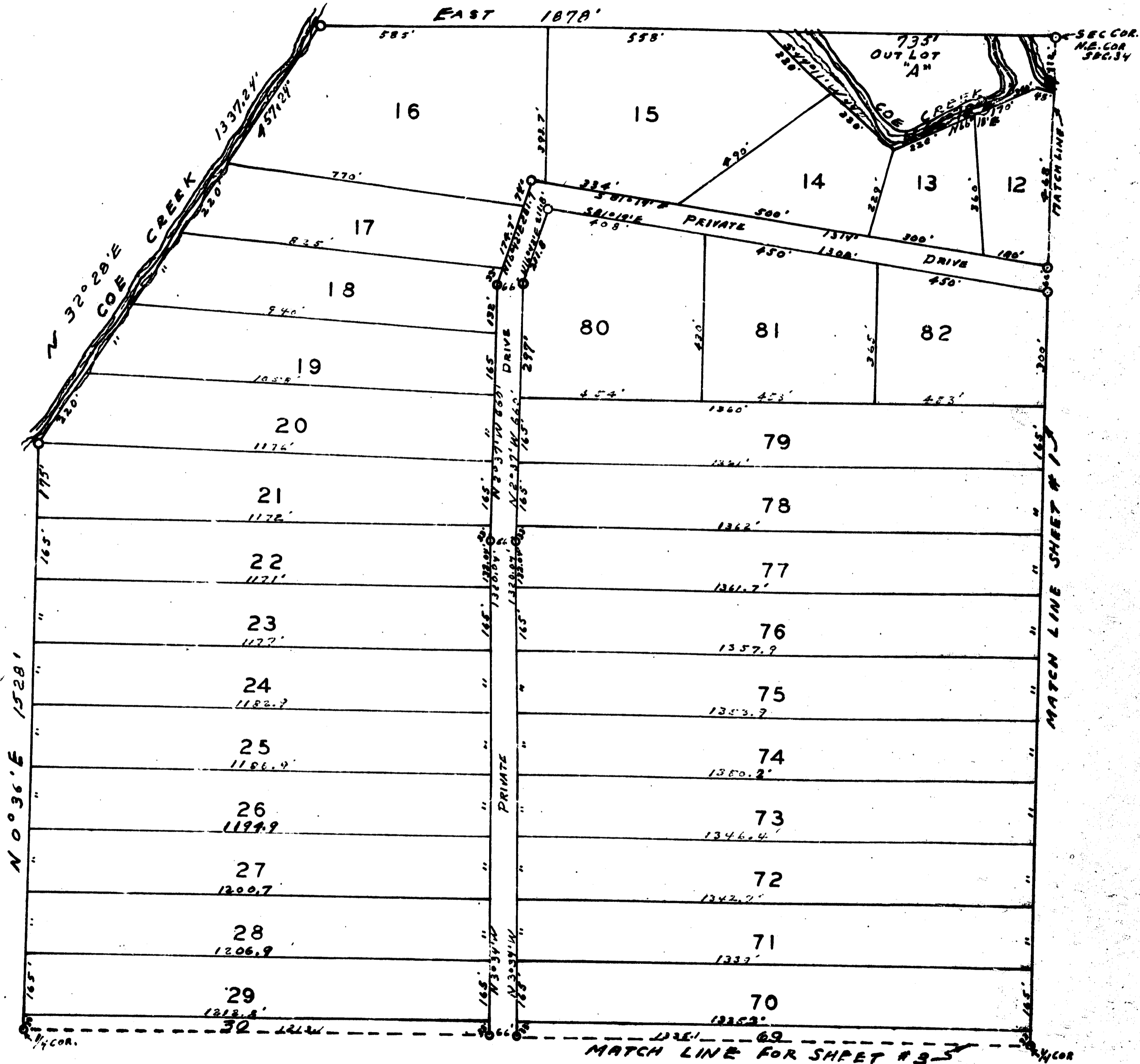
Register's Office
Lake County
Plat of Pine River Hills
Dover Twp.
was Recorded this 12 day of December, A.D. 1956 at 2 o'clock P.M. in Liber 1300.4 of 1 page
Taft V. Utter Register of Deeds

I hereby certify this copy is a true copy of map or plat forwarded the Register of Deeds for recording.
Date December 7, 1956
FILED IN AUDITOR'S GENERAL JOURNAL
Date December 18, 1956
EXAMINED AND APPROVED
Date December 7, 1956
Frank Szymanski Auditor General
By L. J. MacElroy Plat

38834

PINE RIVER HILLS

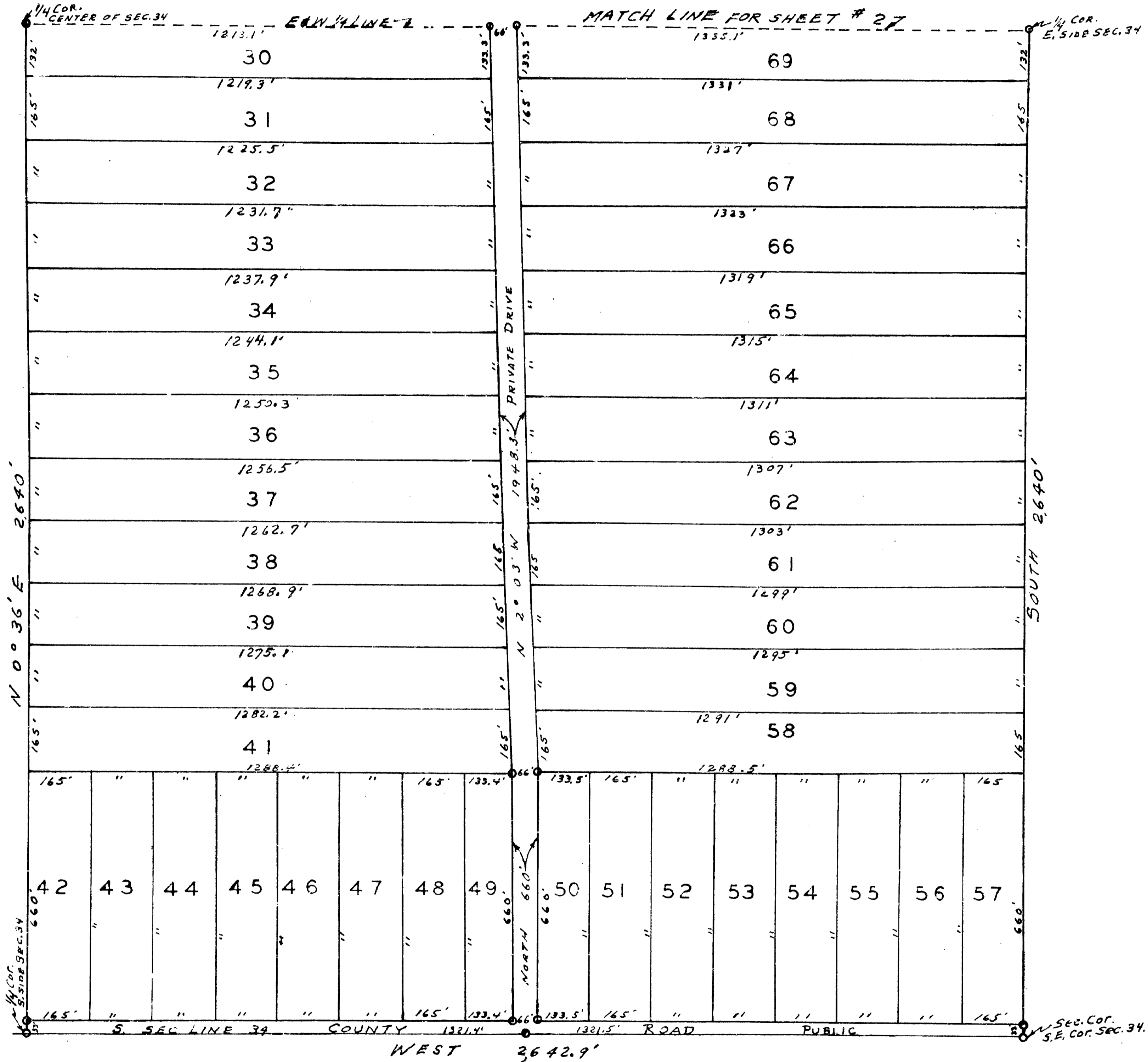
SHEET NO TWO



38834

PINE RIVER HILLS

SHEET NO THREE



38834