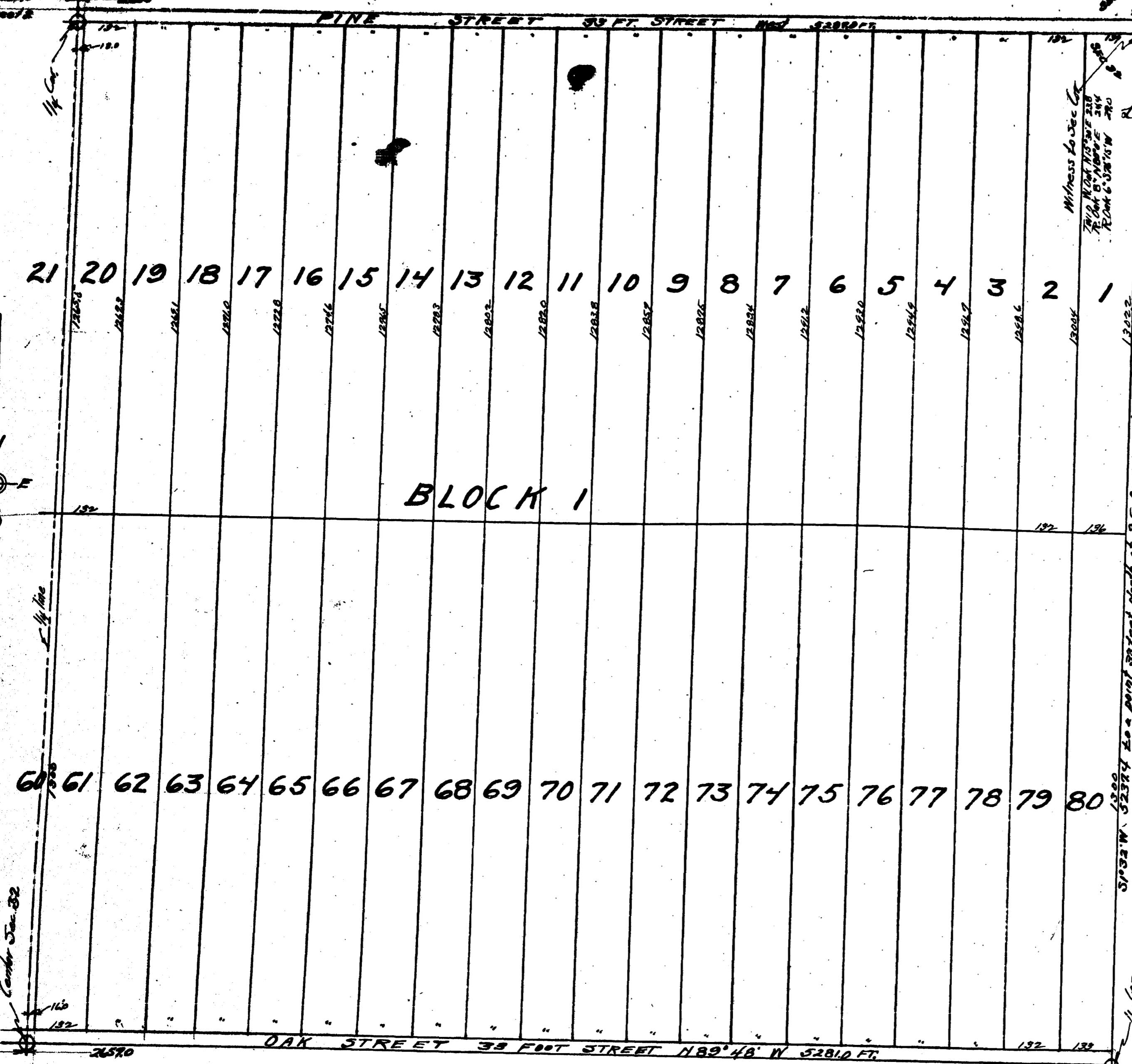


and see

Examined and Approved
May 31-1929
Deputy Auditor General



24904



Register's Office
Lake County
Plat of Superior's
Plat of Stanley Park
was recorded this 3rd day of
June A.D. 1929
E. I. in Year 1929
on Page 4839/50

SUPERVISOR'S PLAT
OF
Stanley Park
A PORTION OF SECTIONS 28, 29 AND 32.
T17N R11W
CHASE TWP. - LAKE CO. - MICH.

I HEREBY CERTIFY THAT THIS COPY IS
A TRUE COPY OF THE MAP OR
FORWARDED THE REGISTER OF DEEDS
FOR LEGGEDING.
GIVEN AND
May 31-1929
Deputy Auditor General

DEDICATION

KNOW ALL MEN BY THESE PRESENTS, that I Eldo H. Sawyniec
Supervisor of the township of Chase, County of Lake, State of
Michigan, by virtue of authority in me vested, by Section 3350
compiled laws of 1915 as amended having been duly authorized
by the township board of the township of Chase, have caused
the land described in the annexed plat to be surveyed
laid out and platted to be known as Superior's Plat of Stanley
Park a portion of sections 28, 29 & 32 T17N R11W, Chase Township
Lake County, Michigan, and that the streets as shown thereon
are hereby dedicated to the use of the public.

Witnesses
Joseph Daddler
Robert Lind
Eldo H. Sawyniec
Supervisor of Chase Township

State of Michigan }
County of Lake } SS

On this 6th day of April A.D. 1929 before me a
Notary Public in and for said Lake personally came the above
named Eldo H. Sawyniec Supervisor of Chase Township
known to me to be the person who executed the above dedication
and acknowledged the same to be his free act and deed
as such supervisor.

FILED IN AUDITOR GENERAL'S DEPT.
June 19-1929
Deputy Auditor General
My Commission Expires Dec 20-1931

DESCRIPTION OF LAND PLATTED.

The land embraced in the annexed Superior's Plat of Stanley Park is described as follows; Beginning
at a point 33 feet north of the south east corner of sections 32, T17N R11W, Thence N89°0'W 2293.6
feet, Thence N 0° 35' E 2866.1 feet, Thence N 89° 47' W 1940.0 feet to a point 33 feet east of the
quarter corner between sections 28 & 32, Thence N 1° 40' E 2561.7 feet to a point 33 feet east of
the corner common to sections 28, 29, 31 & 32, Thence N 0° 45' E 1889.6 feet, Thence S 65° 10' E 1073.0
feet, Thence S 60° 40' E 635.3 feet, Thence S 66° 44' E 659.8 feet, Thence S 75° 44' E 734.8 feet
Thence N 51° 00' E 1957.5 feet to a point 33 feet south of the E&W 1/4 line through section 29,
Thence S 81° 25' E 1926.7 feet to a point 33 feet south of the quarter corner between sections 28 & 29
Thence S 81° 6' E 1923.7 feet, Thence S 1° 47' W 2606.7 feet, Thence N 88° 45' W 1321.0 feet to the section
corner common to sections 28, 29, 32 & 33, Thence S 1° 33' W 5297.4 feet to place of beginning.
All distances are given in feet and decimals thereof.

APPROVAL OF TOWNSHIP BOARD

This plat was approved at a meeting of the
Township Board, held on the 5th day of April A.D. 1929
E. Killmer
Clerk

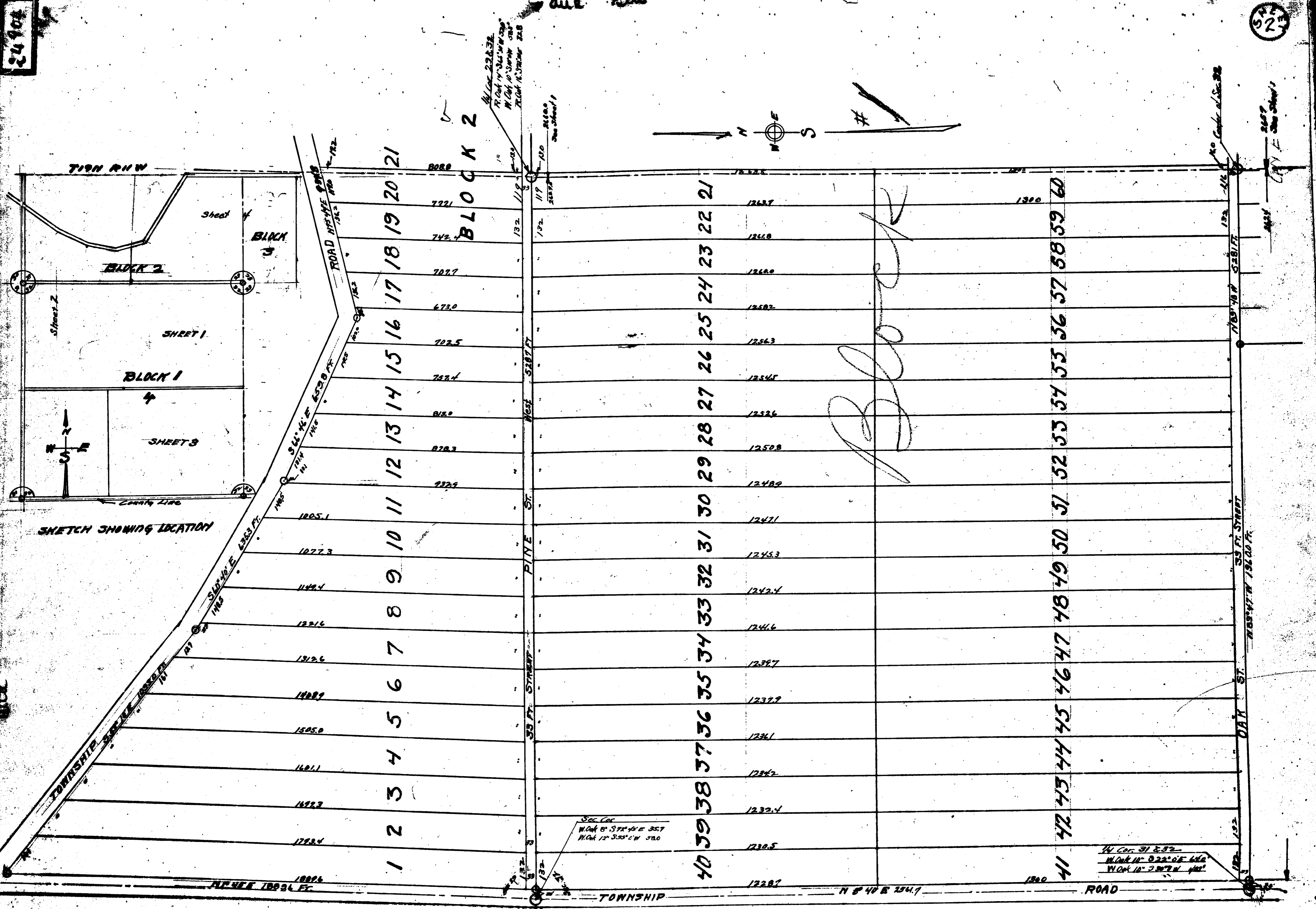
APPROVAL OF COUNTY PLAT BOARD

This plat was approved on the 6th day of April A.D. 1929
Stanley Park
Judge of Probate
County Clerk
County Treasurer

SURVEYOR'S CERTIFICATE

I hereby certify that the plat hereto delineated is a
correct one, and that permanent monuments consisting
of 1 inch by 15 inch irons set in a concrete base base of
inches in diameter and 40 inches deep have been placed
in the ground at all points marked thus as shown
thereon at all angles in the boundary of the land
platted and at all intersections of streets and at
all intersections of streets with the boundaries
of the land platted
E. E. Jones
Registered Civil Engineer.

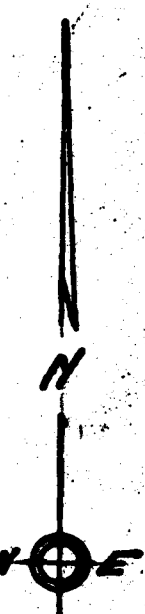
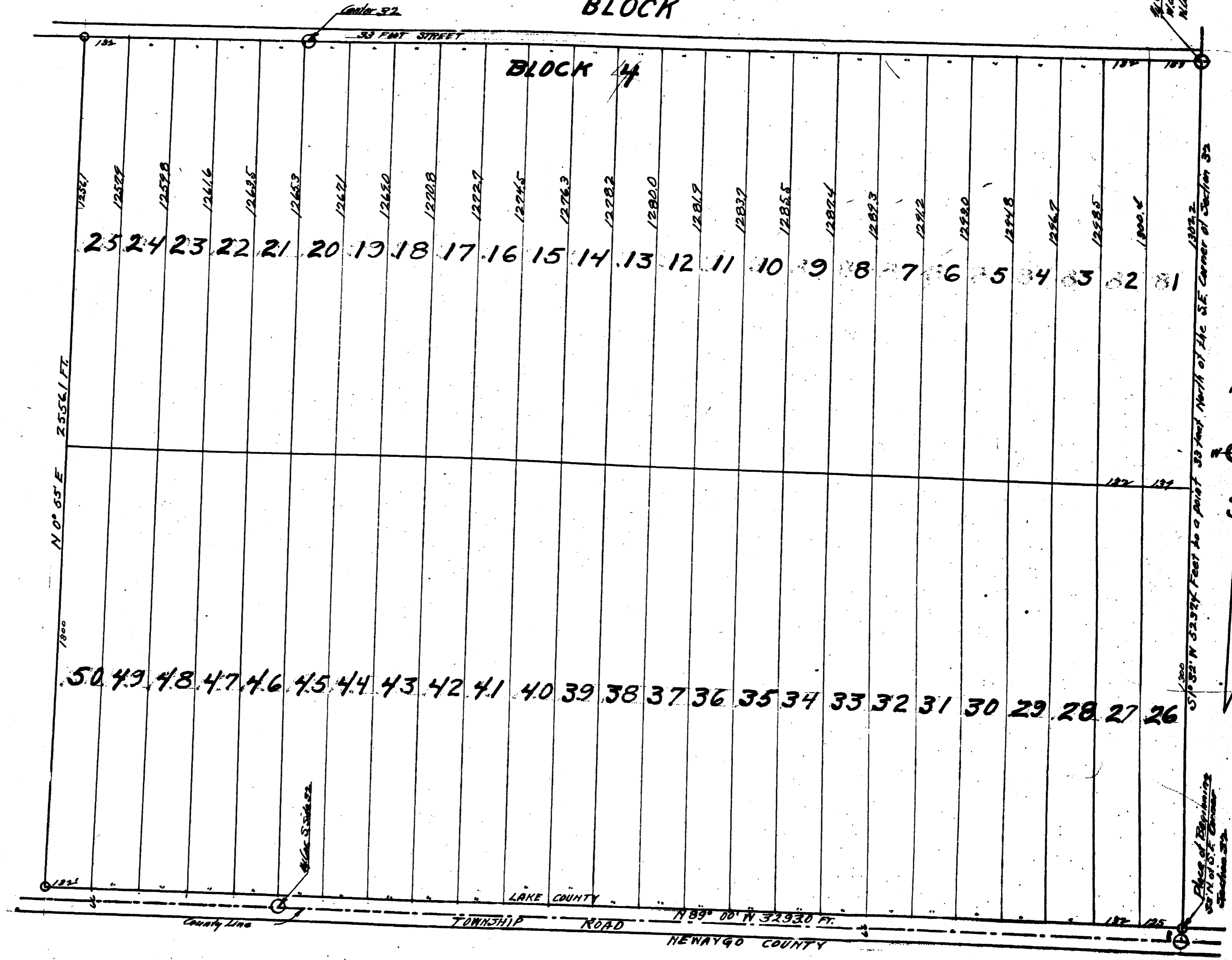
2397



24904

and here

BLOCK



1/2 Corner 32 & 33
North 12° 10' 30\"/>

1302.2
S 70° 52' N 3232.4 Feet to a point 33 feet North of the S.E. Corner of Section 32

Place of Beginning
see N of S.F. Division
Section 32

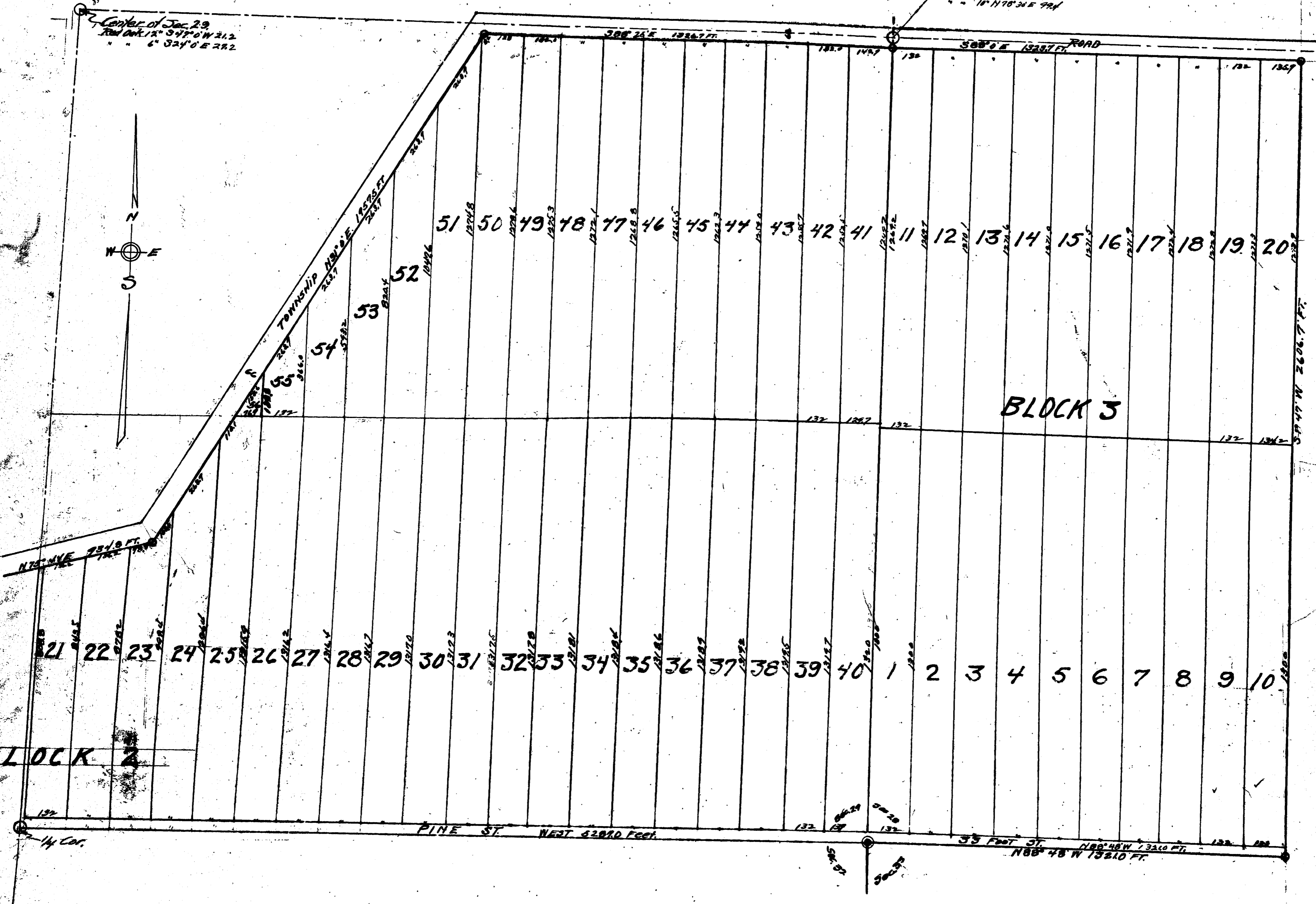
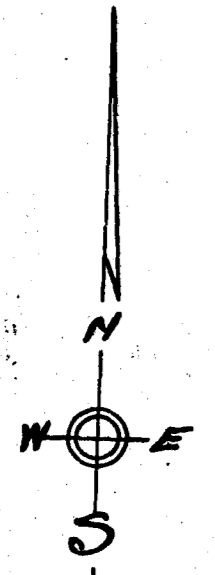
24904

and Ben

54

1/4 Cor. 20829
N. 04° 10' 11" 29' 0" N 930
" 18' 11" 0' 34" E 994

Center of Sec. 29
Rd. Cnr. 12° 34' 0" W 212
" 6° 32' 0" E 282



BLOCK 2

BLOCK 3

2597