

13685

**PLAT OF
WOLF LAKE SUBDIVISION**

---IN---
Township 19 N. R. 13 W.
Lake County, Mich.

Scale 200ft. to one Inch.

Examined and Approved
JUL 19 1911

Deputy Auditor General

REGISTRAR'S OFFICE.
LAKELAND, MICH.

ORIGINAL ON FILE
RECORDED ON FILE

I hereby certify that this copy is a true copy of the MAP or PLAT forwarded the Registrar for recording.

Completed **JUL 20 1911**
Deputy Auditor General

Filed in Auditor General's Dep't.
JUL 26 1911
Deputy Auditor General

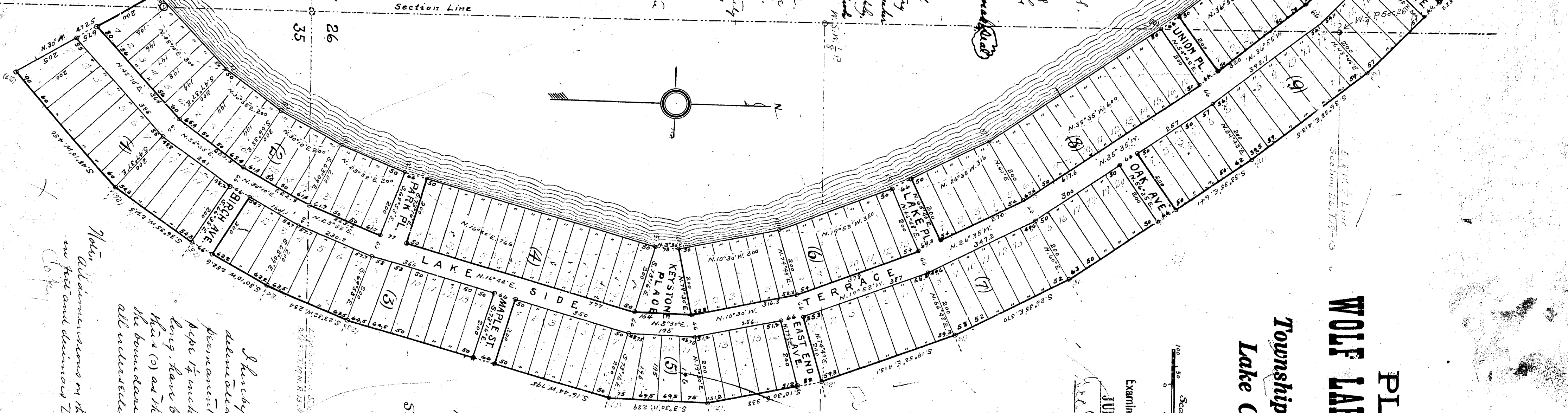
Know All Men by these Presents, that we, Frank W. Wacker and Elizabeth Wacker his wife, and George Wacker and Mary Wacker, his wife, as executors, have caused the land embraced in the annexed plat to be surveyed, laid out and divided, to be known as Wolf Lake Subdivision in Township 19 N. R. 13 W., Lake County, Mich., and that the sections and alleys as shown on said plat are hereby declared to be a part of the same, except the following: To-wit: **Frank Wacker, Elizabeth Wacker, George Wacker, Mary Wacker, and their heirs and assigns** } and the 10 1/2 of Section 15, Township 19 N. R. 13 W., Lake County, Mich. as shown on said plat. The land embraced in the annexed plat of Wolf Lake Subdivision is bounded on the north by the north line of Section 15, Township 19 N. R. 13 W., Lake County, Mich., as shown on said plat, and on the east by the east line of Section 15, Township 19 N. R. 13 W., Lake County, Mich., as shown on said plat, and on the south by the south line of Section 15, Township 19 N. R. 13 W., Lake County, Mich., as shown on said plat, and on the west by the west line of Section 15, Township 19 N. R. 13 W., Lake County, Mich., as shown on said plat. The land embraced in the annexed plat of Wolf Lake Subdivision is bounded on the north by the north line of Section 15, Township 19 N. R. 13 W., Lake County, Mich., as shown on said plat, and on the east by the east line of Section 15, Township 19 N. R. 13 W., Lake County, Mich., as shown on said plat, and on the south by the south line of Section 15, Township 19 N. R. 13 W., Lake County, Mich., as shown on said plat, and on the west by the west line of Section 15, Township 19 N. R. 13 W., Lake County, Mich., as shown on said plat.

N. 4°10' E. 300 ft. to Station (1), then	S. 5°37' E. 303 ft. to Sta. (15), then
N. 88°35' E. 200 "	S. 45°23' E. 522 "
N. 3°01' E. 200 "	S. 36°55' E. 413.5 "
N. 23°32' E. 200 "	S. 33°35' E. 641 "
N. 16°41' E. 746 "	S. 26°35' E. 370 "
N. 3°30' E. 70 "	S. 19°52' E. 4151 "
N. 10°30' W. 300 "	S. 10°30' E. 338 "
N. 19°52' W. 350 "	S. 3°36' W. 289 "
N. 26°33' W. 316 "	S. 16°41' W. 795 "
N. 35°35' W. 600 "	S. 23°32' W. 254 "
N. 36°55' W. 366 "	S. 30°10' W. 252 "
N. 42°31' W. 450 "	S. 36°55' W. 271.5 "
N. 52°57' W. 200 "	S. 48°10' W. 450 "
N. 27°36' E. 466 "	N. 30°06' W. 472.5 "

Herein shown by reference to the accompanying plat, which is hereby certified to be a true and correct copy of the same, as shown on the original plat on file in the office of the Register of Deeds for Lake County, Michigan.

George Wacker, J. P.
Frank Wacker, J. P.
Mary Wacker, J. P.
Elizabeth Wacker, J. P.

Office of County Treasurer
Barkman Building, Lake County, Mich.
June 27 1911



Musket & Cornice;
Mantua Cor. between Sects 34 & 35
Double Well Road & N 88°30' E. 484 ft.
N.W. Cor. Lot (7) Block (5)
Do. 5" S 41°45' W. 9 "
N.W. Cor. Block (4)
M. Marble 9" N 55° E. 33 ft.
N. angle in Lot (4) Block (1)
N. Oak 4" S 28°15' E. 57 ft.
Do. 6" S 61° W. 129 "
Sto # (5)
N. Oak 7" S 33°40' W. 33 ft.
Do. 10" S 15° E. 881 "

Plat hereby certified that the plat herein annexed is a correct one, and that the same is a true and correct copy of the same, as shown on the original plat on file in the office of the Register of Deeds for Lake County, Michigan.

J. R. Brown,
Surveyor

Note: All dimensions on this plat are in feet and decimals of feet.

PLAT OF WOLF LAKE SUBDIVISION

Township 19 N. R. 13 W.
Lake County, Mich.

Scale 200ft. to an Inch.

Examined and Approved
JUL 19 1914

Deputy Auditor General

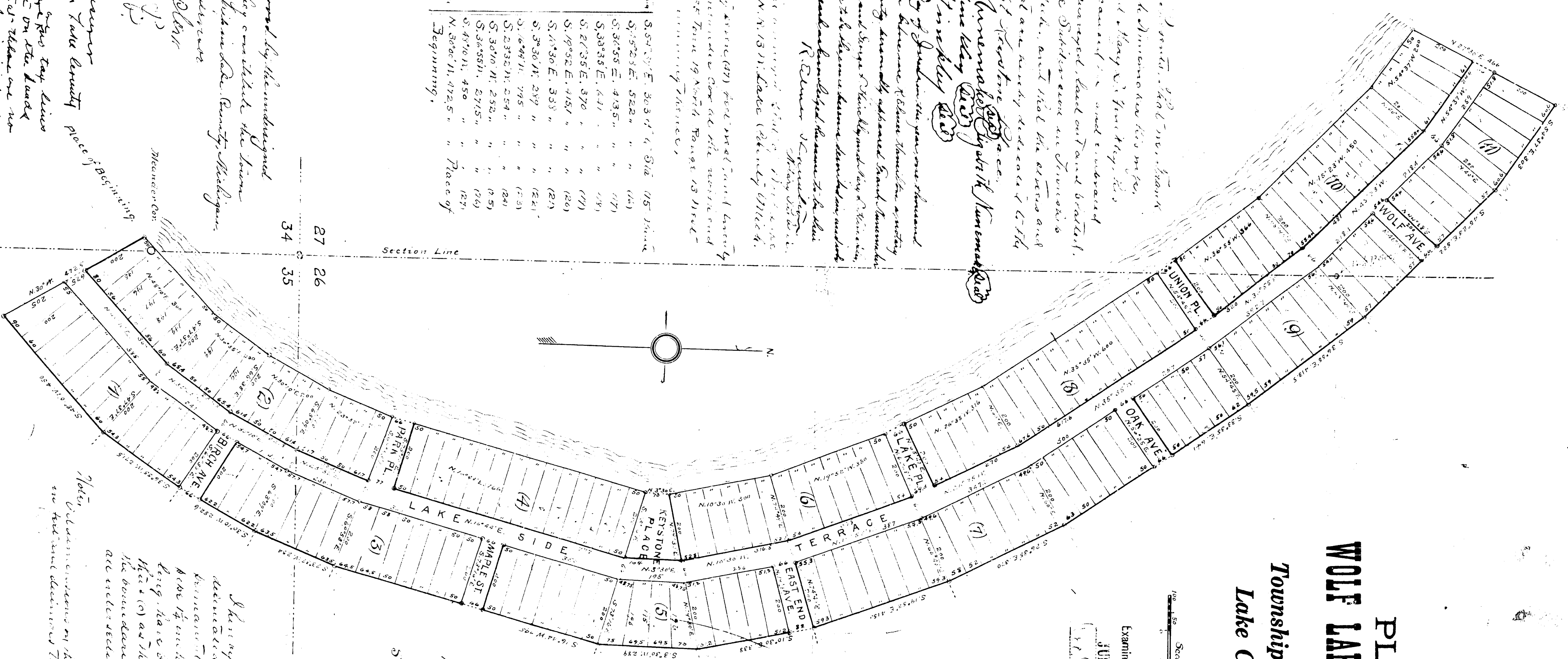
COMPTROLLER'S OFFICE
COUNTY CLERK
I hereby certify that this copy is a true copy of the plat of PLAT for record of Deeds for recording.
JUL 20 1914
Deputy Auditor General

Filed in Auditor General's Dep.
JUL 26 1914
Deputy Auditor General

Measure to Corner:
Northwest Cor. between Sects 34 & 35
Bench Mark: Quad 46 N 88° 30' E. 481.17'
N.W. Cor. Block (5)
Dor. 5° 54' 45" N. 9"
N.W. Corner Block (4)
N.W. Corner N 55° E. 334.1'
N. on K 4° 52' 35" E. 574'
Dor. 6° 54' 11" N. 129'
Dor. 10° 51' 15" E. 281'

Having ascertained that the plat herein described is correct, and that the same is in conformity with the laws of Michigan, I hereby certify that the same is correct and that the same is in conformity with the laws of Michigan.

J. L. Cassin, Surveyor



N. 50° 30' E. 300 ft. to Stake (1) then S. 57° 30' E. 303 ft. to Stake (1) S. 57° 30' E. 115 ft. to Stake (1)	(2)	S. 57° 30' E. 522 ft. "	(16)
N. 50° 30' E. 115 ft. "	(3)	S. 38° 55' E. 413.5 ft. "	(17)
N. 50° 30' E. 410 ft. "	(4)	S. 38° 35' E. 441 ft. "	(18)
N. 50° 30' E. 441 ft. "	(5)	S. 27° 35' E. 370 ft. "	(19)
N. 50° 30' E. 370 ft. "	(6)	S. 19° 52' E. 415.1 ft. "	(20)
N. 50° 30' E. 415.1 ft. "	(7)	S. 17° 30' E. 533 ft. "	(21)
N. 50° 30' E. 533 ft. "	(8)	S. 3° 30' N. 289 ft. "	(22)
N. 50° 30' E. 289 ft. "	(9)	S. 16° 44' 11.745 ft. "	(23)
N. 50° 30' E. 115 ft. "	(10)	S. 23° 32' N. 254 ft. "	(24)
N. 50° 30' E. 254 ft. "	(11)	S. 30° 10' N. 252 ft. "	(25)
N. 50° 30' E. 252 ft. "	(12)	S. 36° 58' 11.2715 ft. "	(26)
N. 50° 30' E. 271 ft. "	(13)	S. 49° 10' 11.450 ft. "	(27)
N. 50° 30' E. 450 ft. "	(14)	N. 50° 30' E. 472.5 ft. "	(28)
N. 50° 30' E. 472.5 ft. "	(15)	Beginning.	

This plat is hereby approved by the undersigned
retrospectively, so that they might be the same
as if they were made at the same time.
J. L. Cassin, Surveyor
Deputy Auditor General
Office of County Treasurer
Berkman Michigan Lake County
June 27 1914
I hereby certify that the plat herein described is correct and that the same is in conformity with the laws of Michigan.