



# LAKELAND ACRES NO. 1

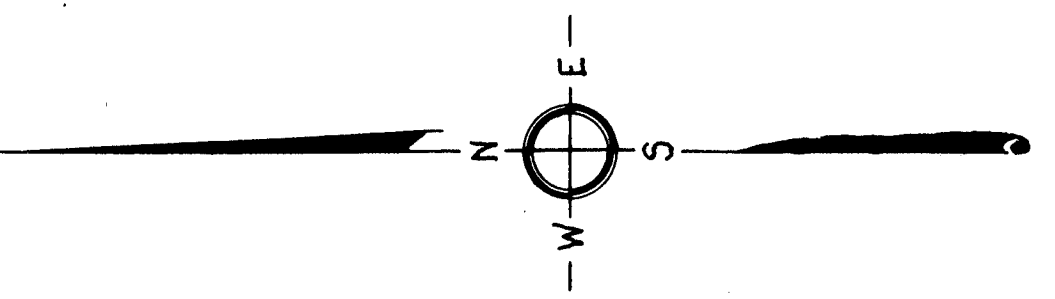
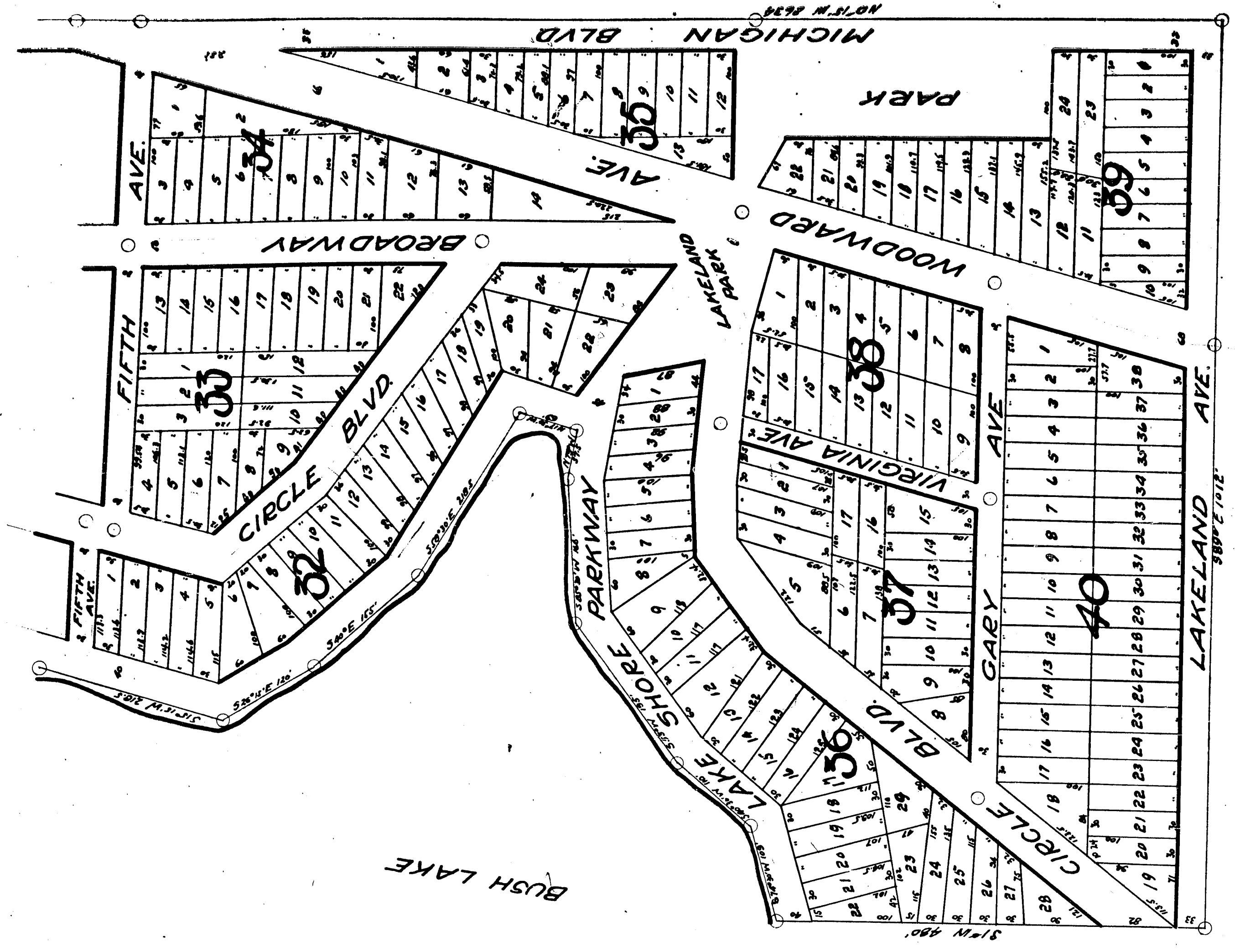
West part of Govt. Lots No. 6 and 7, Sec. 35 T18 N, R13 W.

LAKE COUNTY, MICHIGAN.

Plat in 2 Sheets  
Sheet 2

Surveyed & Platted by  
Geo. H. Johnson, Reg. Sur.  
Baldwin, Mich.

8/26/25



SCALE  
100 FT. = 1 INCH.  
All dimensions  
are given in feet  
and decimals.

# LAKEEILAND ACRES NO. 1

West part of Govt. Lots No. 6 and 7, Sec. 35 T8 N, R15 W.

## LAKE COUNTY, MICHIGAN.

Surveyors Assisted by  
Geo. H. Johnson, Reg. Sur.  
Berkling, Mich.

Part in 2 Sheets  
Sheet 1.

### DEDICATION

Any of men by these present's. That 1, Paul V. Leland Trustee have caused the land embraced in the annexed plat to be surveyed and divided into lots, to be known as Lakeeiland Park, and the same to be dedicated to the use of the public.

Witness my hand and seal this 26th day of August 1928

Paul V. Leland  
Trustee

William E. Maurer  
Trustee

George C. Leland  
Trustee

William E. Maurer  
Trustee

George C. Leland  
Trustee

Place of Beginning  
at east corner of Sec. 35  
T8 N, R15 W.

Belong to  
- full case -  
George C. Leland  
and  
William E. Maurer

### DESCRIPTION OF LAND PLATTED

The land embraced in the annexed plat of Lakeeiland Acres No. 1, West part of Govt. Lots No. 6 and 7, Sec. 35 T8 N, R15 W, Lake County, Michigan, is divided into lots as follows: 34 lots, 31 lots, 32 lots, 33 lots, 34 lots, 35 lots, 36 lots, 37 lots, 38 lots, 39 lots, 40 lots, 41 lots, 42 lots, 43 lots, 44 lots, 45 lots, 46 lots, 47 lots, 48 lots, 49 lots, 50 lots, 51 lots, 52 lots, 53 lots, 54 lots, 55 lots, 56 lots, 57 lots, 58 lots, 59 lots, 60 lots, 61 lots, 62 lots, 63 lots, 64 lots, 65 lots, 66 lots, 67 lots, 68 lots, 69 lots, 70 lots, 71 lots, 72 lots, 73 lots, 74 lots, 75 lots, 76 lots, 77 lots, 78 lots, 79 lots, 80 lots, 81 lots, 82 lots, 83 lots, 84 lots, 85 lots, 86 lots, 87 lots, 88 lots, 89 lots, 90 lots, 91 lots, 92 lots, 93 lots, 94 lots, 95 lots, 96 lots, 97 lots, 98 lots, 99 lots, 100 lots.

### COUNTY TREASURER'S CERTIFICATE

Office of the County Treasurer, Lake Co., Mich.  
I hereby certify that there are no tax liens or other claims against the land described above and that there are no tax liens or other claims against the land described above.

Walter C. Baird  
County Treasurer

### SURVEYORS CERTIFICATE

I hereby certify that the plat herein delineated is a correct and true copy of the original survey and that the same has been approved by the Township Board of the Township of Lakeeiland, Michigan, and that the same is a true and correct copy of the original survey.

George C. Leland  
Surveyor

### CERTIFICATE OF MUNICIPAL APPROVAL

This plat was approved by the Township Board of the Township of Lakeeiland, Michigan, on the 22nd day of August 1928.

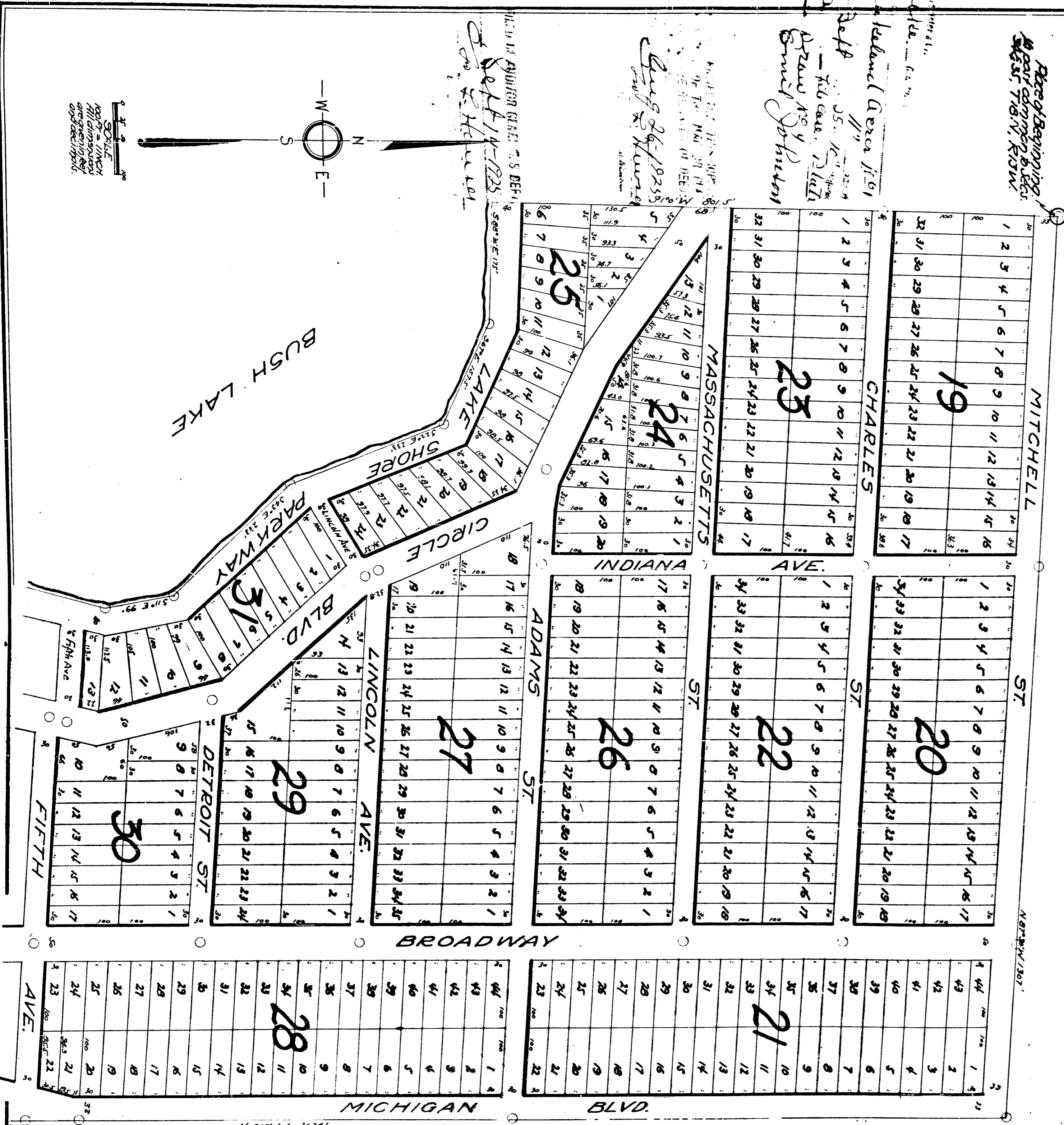
George C. Leland  
Township Clerk

### CERTIFICATE OF APPROVAL OF COUNTY BOARD

This plat was approved on the 24th day of August 1928.

William E. Maurer  
County Treasurer

George C. Leland  
County Treasurer



1592 M 51.0N

Scale  
1 inch  
= 100 feet

100-100-100

Surveyed & Platted by  
Geo. H. Johnson, Reg. Sur.  
Baldwin, Mich.

# LAKEHILAND ACRES NO. 1

West part of Govt. Lots No. 6 and 7, Sec. 35 T18 N, R13 W.

LAKE COUNTY, MICHIGAN.

Plat in 2 Sheets  
Sheet 2

20953

