

# SUPERVISOR'S PLAT

## OF JOINER SUBDIVISION

### LAKE CO., MICH.

OF PART OF SECTION 9 TOWNSHIP NORTH RANGE NO 11 WEST

Examined and approved  
Feb 5-19-24  
D. E. Kinzie  
Deputy Auditor General

Certificate of Municipal approval  
This plat was approved by the Township board of the Township  
Chase of a meeting held  
D. E. Kinzie  
Township Clerk

Certificate of approval by County board.  
This plat was approved at a meeting held  
Feb 2 1924  
Ray Jacobs, Judge of Probate  
William B. Bader, County Treasurer  
Earl Johnson, County Clerk.

Description of land platted  
Commencing at the 1/4 post corner to Sections  
4 and 9 T17N R11W  
Thence N 89 E 850ft  
thence South 820ft  
thence North 537ft  
to place  
of beginning.

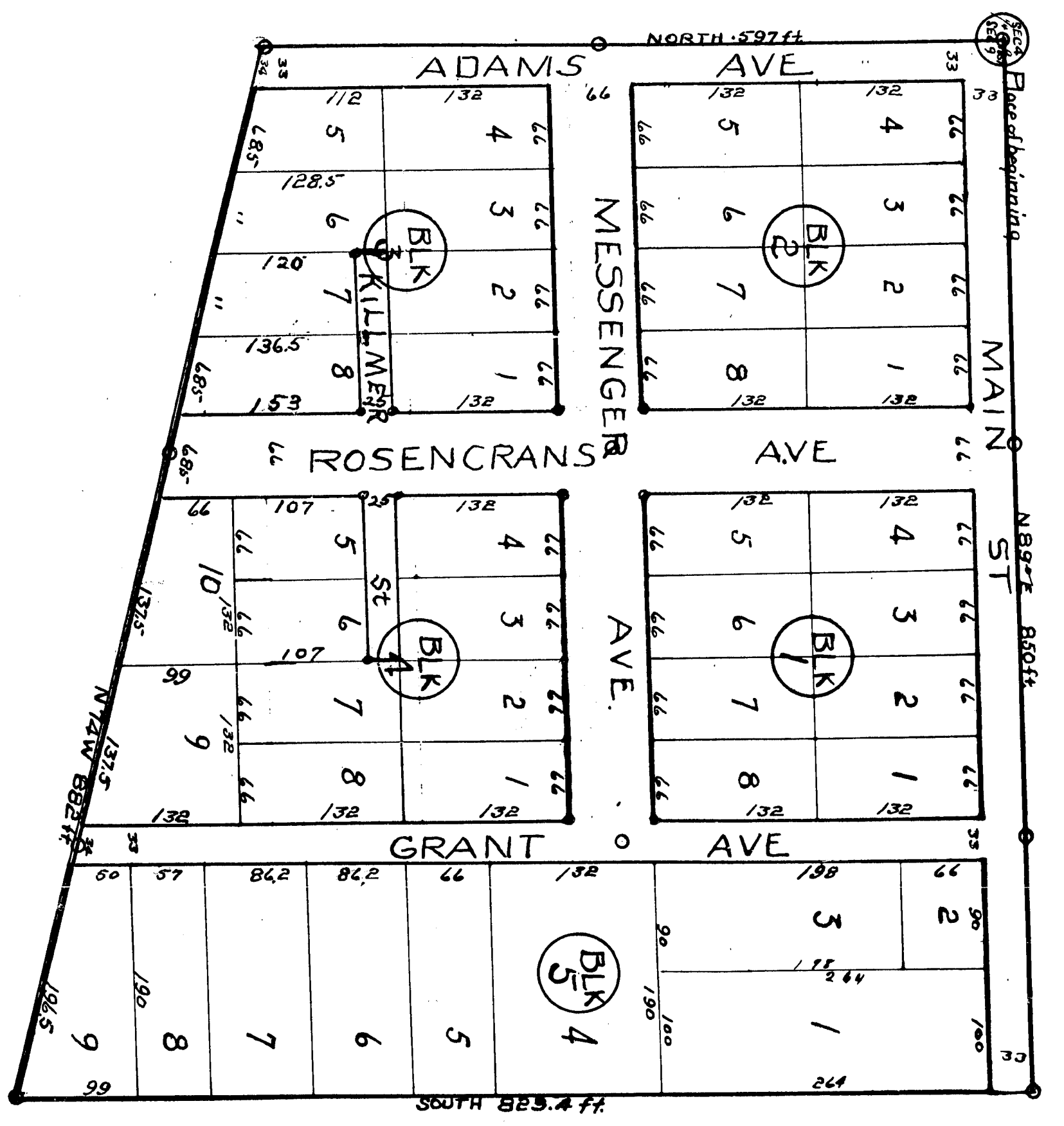
Surveyors Certificate  
I hereby certify that the plat hereon delineated is a  
correct one that permanent monuments consisting  
of 1 inch iron pipe 20 inches long have been  
planted at points marked thus O as here on  
shown at all the angles of streets and alleys  
and at the intersection of streets and alleys

Ray Jacobs  
Judge of Probate

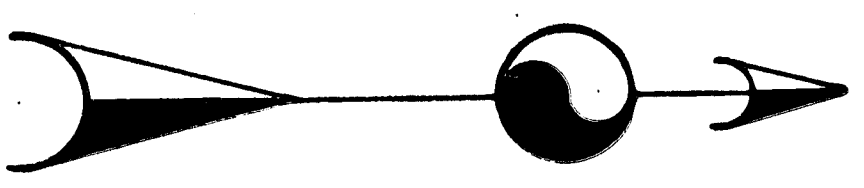
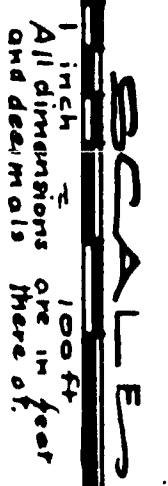
Table  
Refer to plat  
of Joiner Subd  
Feb 4 - Feb 4 1924  
Signed by  
Earl Johnson

Feb 5-1924  
D. E. Kinzie

Feb 11-1924  
D. E. Kinzie



PART OF NW 1/4 OF NE 1/4  
SEC 9 T17N R11W.



KNOW ALL MEN BY THESE PRESENTS  
that I, Frank S. Jackson, Supervisor for the  
TOWNSHIP of Chase, Lake Co., Mich.,  
by virtue of the authority in me vested by Section  
3350 C. L. of 1915, Having been duly authorized  
by the township board, have caused the land described  
in the annexed plat to be surveyed, laid out and platted  
to be known as SUPERVISOR'S PLAT JOINER'S SUBDIVISION  
of a part of Section 9 Township No 11 North, Range  
No 11 West, Lake Co., Mich., and that the streets and  
alleys on said plat are here by dedicated to the public  
Signed and sealed  
in presence of  
Ray Jacobs Judge of Probate  
William B. Bader County Treasurer  
Earl Johnson County Clerk.

STATE of Michigan SS  
County of Chase

On this 2 day of February 1924  
before me a Notary Public in and for said County  
personally came the above named Frank S. Jackson  
known to me to be the person who executed the above  
dedication and acknowledged the same to be his free  
act and deed as such Supervisor  
Witness my hand and Notary Public  
Commission expires March 15-1924

# SUPERVISOR'S PLAT

## OF JOINER SUBDIVISION

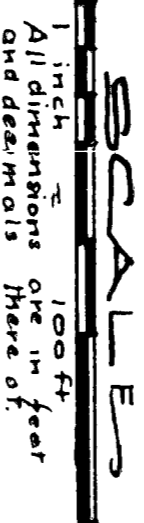
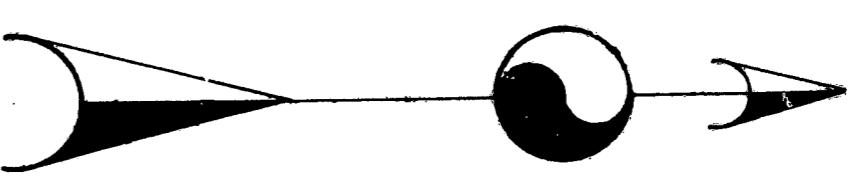
OF PART OF SECTION 9 TOWNSHIP N017 NORTH RANGE N011 WEST  
LAKE CO., MICH.

5-17-24  
J. E. Killen

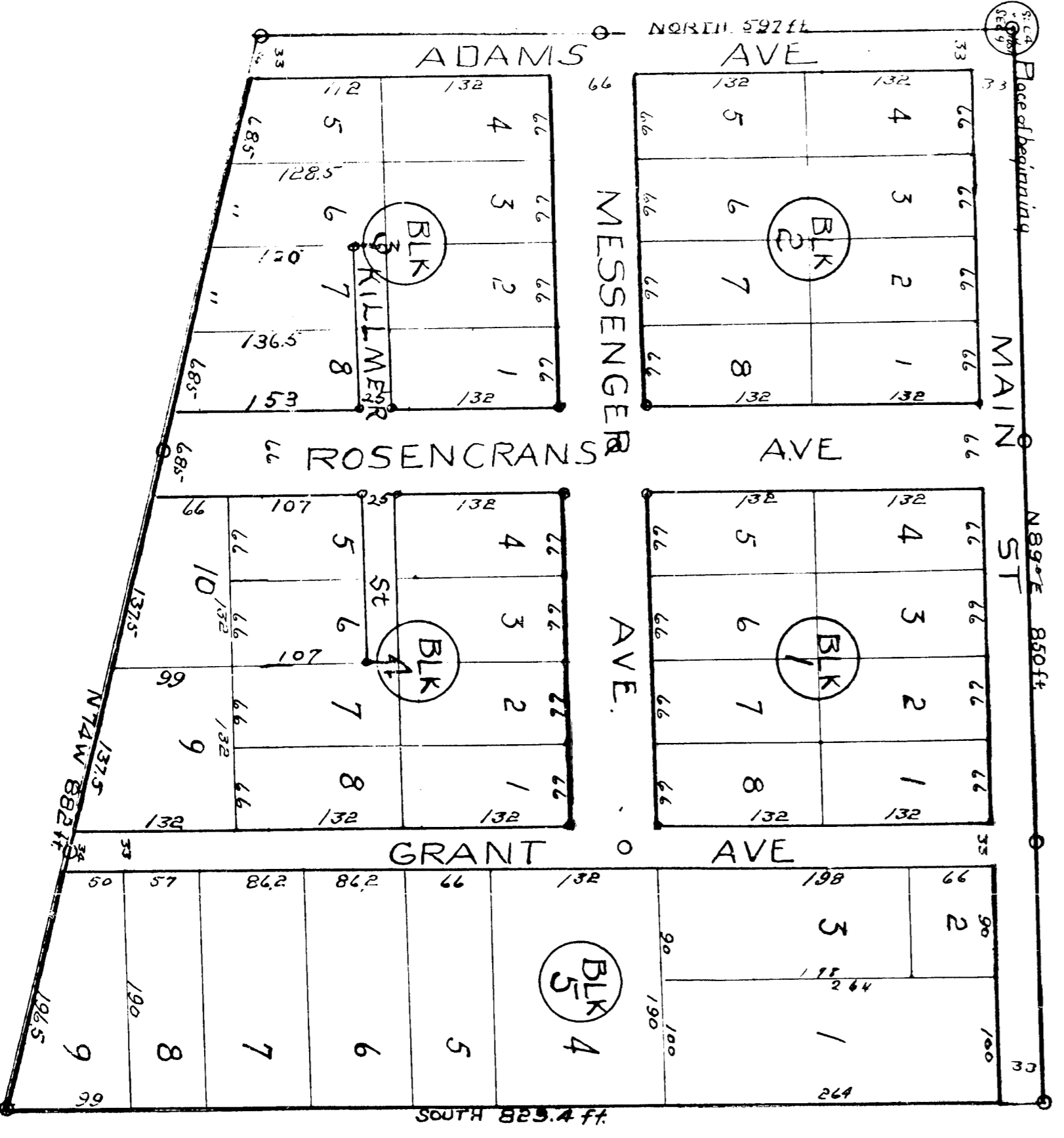
KNOW ALL MEN BY THESE PRESENTS that I, Supervisor for the Township of Chase, Lake Co., Mich., by virtue of the authority in me vested by Section 3350 C. L. of 1915, having been duly authorized by the township board, have caused the land described in the annexed plat to be surveyed, laid out and platted to be known as SUPERVISOR'S PLAT in the Township of Chase, Lake Co., Mich., and that the streets and alleys on said plat are here by dedicated to the public signed and sealed in presence of

Wm. J. Jackson SS  
County of Lake

On this 21st day of February 1924 before me a Notary Public in and for said County personally came the above named Wm. J. Jackson Supervisor of the Township of Chase known to me to be the person who executed the above dedication and acknowledged the same to be his free act and deed as such Supervisor  
My commission expires March 15 - 1924  
Notary Public



PART OF NW 1/4 OF NE 1/4  
SEC 9 T17N R11W.



Certificate of Municipal approval  
This plat was approved by the Township board of the Township of Chase at a meeting held  
of A. N. - 5 - 1924  
J. E. Killen  
Township Clerk.

Certificate of approval by County board  
This plat was approved at a meeting held  
Feb. 2, 1924  
Wm. J. Jackson Judge of Probate  
Wm. J. Jackson County Treasurer  
Wm. J. Jackson County Clerk.

Description of land platted  
Commencing at the 1/4 post common to Sections 4 and 9 T17N R11W; Thence N 89 E 850ft thence South 820ft to place of beginning. Thence North 597ft

Surveyors Certificate  
I hereby certify that the plat hereon delineated is a correct one that permanent monuments existing correct one that permanent monuments existing of 1/2 inch iron pipe 20 inches long have been planted at points marked thus O as here on shown at all the angles of the boundaries and at the intersection of the streets and alleys  
Wm. J. Jackson  
Registered Surveyor

*Handwritten notes:*  
The 1/4 post common to Sections 4 and 9 T17N R11W  
is the same as the  
one shown on the  
plat of the  
Joiner Subdivision  
dated 5-17-24  
J. E. Killen