

# "TOMA ACRES"

Part of N. 1/2 of N.W. 1/4 of Sec. 22 T. 20 N. R. 14 W.  
ELK TWP  
LAKE CO., MICH.

**DEDICATION** - KNOW ALL MEN BY THESE PRESENTS, that we Russell C. Rinehart as proprietor, and Madelyn D. Rinehart his wife, have caused the land embraced in the annexed plat to be surveyed, laid out and platted, to be known as "TOMA ACRES" Part of N. 1/2 of N.W. 1/4 of Sec. 22 T. 20 N. R. 14 W. Elk Twp., Lake Co., Mich., and that the Roads and Trails as shown on said plat are hereby dedicated to the use of the public, except Kans' Court which is dedicated to the use of the owners of lots 4-5 & 6 only.

Signed and Sealed in Presence of

George Glass  
Notary Public  
Lake Co., Mich.  
My Commission expires 1/27/54

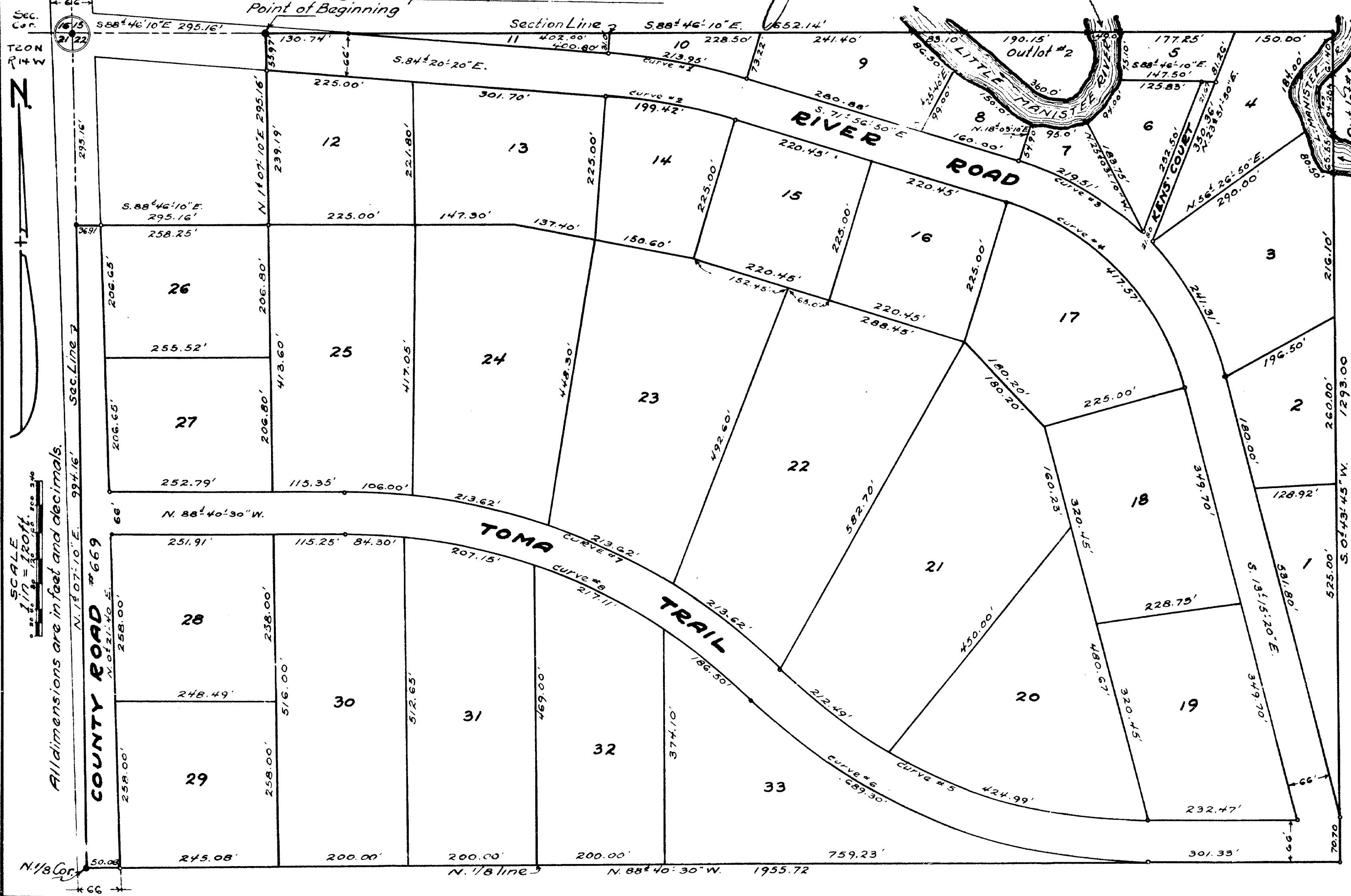
On this 15<sup>th</sup> day of October 1951 before me a Notary Public in and for said county, personally came the above named Russell C. Rinehart and Madelyn D. Rinehart his wife, known to me to be the persons who executed the above dedication, and acknowledged the same to be their free act and deed.

**APPROVAL by BOARD of COUNTY ROAD COMMISSIONERS**  
This plat has been examined and was approved on the 19<sup>th</sup> day of October 1951 by the Lake Co. Board of Road Commissioners.

**APPROVAL by COUNTY BOARD**  
This plat was approved on the \_\_\_\_\_ day of \_\_\_\_\_ 1951 by the Lake County Plat Board.

November 8, 1951  
**MUNICIPAL APPROVAL**  
This plat was approved by the Township Board of the township of Elk at a meeting held on the 3<sup>rd</sup> day of November 1951

**COUNTY TREASURER'S CERTIFICATE RELATING TO TAXES**  
Office of County Treasurer, Lake County.  
I hereby certify that there are no tax liens or titles held by the State on the lands described hereon, and that there are no tax liens or titles held by individuals on said lands, for the five years preceding the 19<sup>th</sup> day of October 1951, and that the taxes for said period of five years are paid as shown by the records of this office.  
This certificate does not apply to taxes, if any, now in process of collection by township, city or village collecting officers.



**DESCRIPTION of LAND PLATED**  
The land embraced in the annexed plat of "TOMA ACRES" part of N. 1/2 of N.W. 1/4 of Sec. 22 T. 20 N. R. 14 W. Elk Twp., Lake County Mich., is described as follows: Beginning at a point, S. 88° 46' 10" E. 295.16' from Sec. cor. cor. to Sec's 15-16-21 E. 22, on sec. line cor. to Sec's 15 E. 22, thence along said sec. line, S. 88° 46' 10" E. 165.214'; thence S. 02° 43' 45" W. 1295.00'; thence along N. 1/8 line, N. 88° 40' 30" W. 1955.72' to N. 1/2 cor. on sec. line cor. to Sec's 21 E. 22, thence along said sec. line, N. 1° 07' 10" E. 994.16'; thence S. 88° 46' 10" E. 295.16' parallel to N. sec. line; thence N. 1° 07' 10" E. 295.16' parallel to W. sec. line to Point of Beginning.

**SURVEYOR'S CERTIFICATE**  
I hereby certify that the plat hereon delineated is a correct one and that permanent metal monuments consisting of bars not less than one-half inch in diameter and 4 1/2 inches in length encased in a concrete cylinder at least 4 inches in diameter and 4 1/2 inches in depth have been placed at points marked thus (o) as thereon shown at all angles in the boundaries of the land platted, at all intersections of Roads and Trails, Road and Court, and at all intersections of Roads and Trails with the boundaries of the land platted as shown on said plat.

George Glass  
Notary Public  
Lake Co., Mich.

**CURVE DATA**

Curve #1	Curve #2	Curve #3
Δ = 12° 23' 30"	Δ = 12° 35' 30"	Δ = 58° 41' 30"
D = 5° 47' 30"	D = 6° 12' 50"	D = 12° 05' 30"
L = 213.95'	L = 199.42'	L = 482.63'
R = 988.37'	R = 922.37'	R = 474.68'
L.Ch. = 213.34'	L.Ch. = 199.10'	L.Ch. = 468.26'
L.Ch.Br. = S. 78° 08' 55" E.	L.Ch.Br. = S. 78° 08' 35" E.	L.Ch.Br. = S. 42° 36' 05" E.
Curve #4	Curve #5	Curve #6
Δ = 58° 41' 30"	Δ = 45° 00'	Δ = 45° 00'
D = 14° 03' 20"	D = 7° 03' 40"	D = 6° 31' 50"
L = 417.57'	L = 637.48'	L = 689.30'
R = 408.68'	R = 811.98'	R = 877.98'
L.Ch. = 400.57'	L.Ch. = 621.46'	L.Ch. = 671.98'
L.Ch.Br. = S. 42° 36' 05" E.	L.Ch.Br. = N. 66° 10' 30" W.	L.Ch.Br. = N. 66° 10' 30" W.
Curve #7	Curve #8	
Δ = 45° 00'	Δ = 45° 00'	
D = 6° 01' 30"	D = 6° 28' 30"	
L = 746.86'	L = 695.06'	
R = 951.49'	R = 885.49'	
L.Ch. = 728.24'	L.Ch. = 677.72'	
L.Ch.Br. = N. 66° 10' 30" W.	L.Ch.Br. = N. 66° 10' 30" W.	