

5/10/27

# Idlewild Terrace No. 5

EAST HALF SOUTHWEST QUARTER SECTION 13 TWP 17 NORTH RANGE 13 WEST  
LAKE COUNTY MICHIGAN

Examined and Approved  
May 10-1927  
Ed. S. Howell  
Deputy Auditor General  
24184

**DEDICATION**  
Know all men by these presents: That Walter M. Leasure as trustee, have caused the land embraced in the annexed plat to be surveyed, laid out and plotted to be known as **IDLEWILD TERRACE NO. 5** East half Southwest quarter Sec. 13 T. 17 R. 13 W. Lake County Michigan and that the streets, drives, roads and points are hereby dedicated to the use of the public.

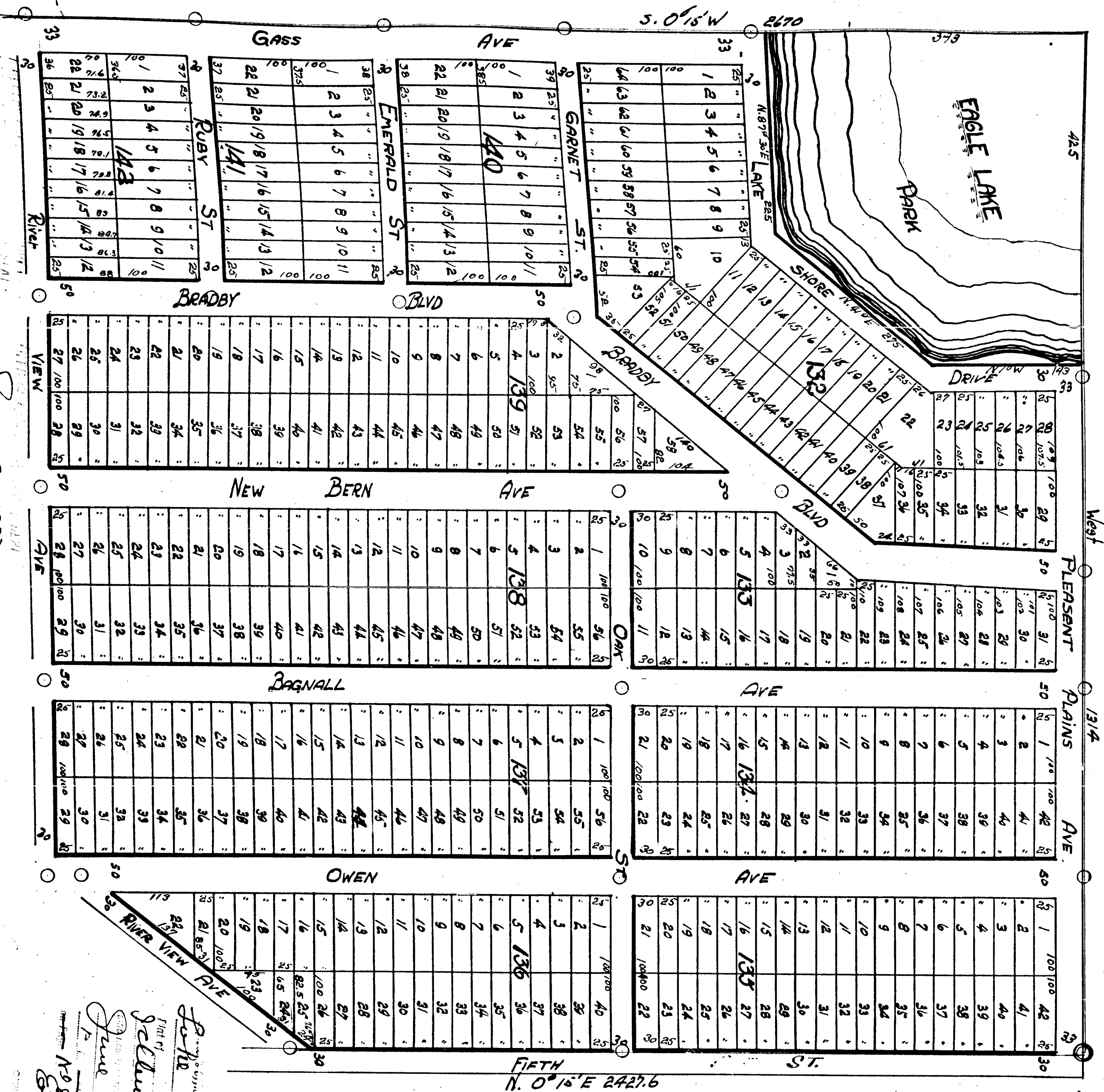
Walter M. Leasure Trustee as proprietor  
Signed and Sealed in presence of  
Walter M. Leasure  
State of Michigan ss.  
County of Lake  
On this 7th day of April 1927 before me a notary public up and before me personally came the above named Walter M. Leasure known to me to be the same person who executed the above declaration and acknowledged the same to be his own free act and deed as such trustee.  
My commission expires April 29, 1929

**Surveyors Certificate**  
I hereby certify that the plat hereon delineated is a correct one and that permanent metal monuments of not less than one inch in diameter and fifteen inches in length set in concrete base of least four inches in diameter and forty-eight inches in depth, have been placed at points marked thus as thereon shown at all angles in the boundaries of the land plotted or all the intersections of streets and at the intersection of streets with the boundaries of the plat as shown on said plat.

**Description of land plotted**  
The land embraced in the annexed plat of **IDLEWILD TERRACE NO. 5** is described as follows: -  
Commencing of the quarter post a concrete block in center of Section 13 T. 17 N. R. 13 W. hence N. 67° 15' E 1374 ft. hence S. 0° 15' W 2670 ft. hence N. 67° 15' E 1306.5 ft. hence N. 0° 15' E 2427.6 ft. to place of beginning.

**County Treasurers Certificate**  
Office of County Treasurer, Lake County Michigan  
I hereby certify that there are no tax liens or files held by the State on the land described in the annexed plat that there are no tax liens or files held by individuals on said lands for the five years preceding the 2nd day of April 1927 and that the taxes for said period of five years are paid as shown by the records of this office.  
Dated this 9th day of May 1927  
County Treasurer  
Certificates of Approvals

Municipal  
This plat was approved by the Twp. board of the Twp. of Pleasant Plains at a meeting held on the 2nd day of May 1927  
Township Clerk  
County Board  
This plat was approved on the 9th day of May 1927  
Judge of Probate  
County Clerk  
County Treasurer



1/4 East the center of Section 13 T. 17-13  
Plat included in 2 sheets  
Sheet No. 1  
Copy

Surveyed and Platted by  
Geo. H. Johnson - Registrar  
Baldwin Michigan

Part of  
Idlewild Terrace Nos. 1-5  
Platted  
June 23 1927  
No. 118-119 case  
Emil Peterson

Idlewild Terrace  
No. 5-1927  
Emil Peterson

June 21-1927  
Geo. H. Johnson

1 inch = 100 ft.  
All dimensions are in feet  
or decimals thereof.

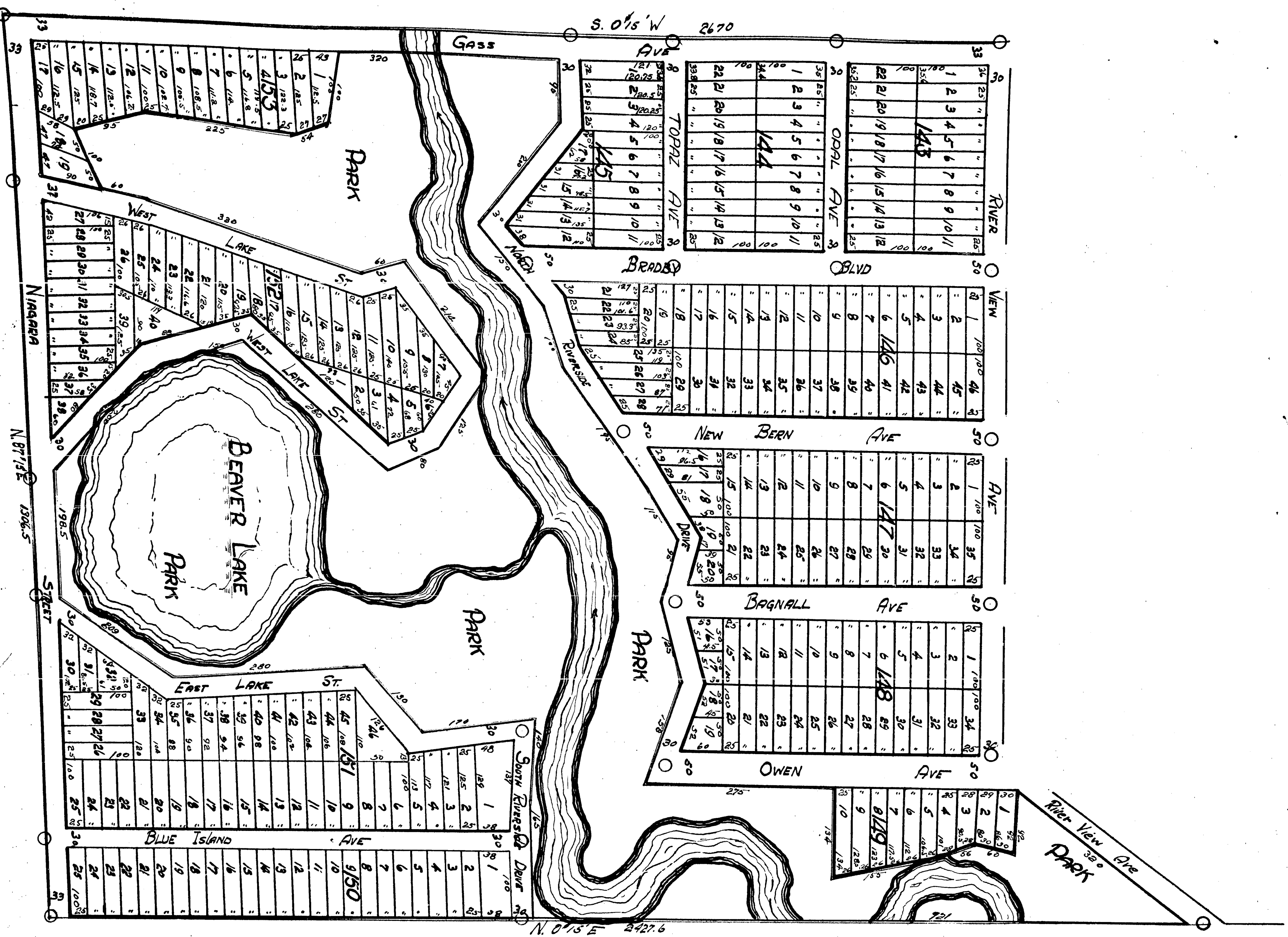


2/10/29

# Idlewild Terrace No. 5

EAST HALF SOUTHWEST QUARTER SECTION 13 TOWNSHIP 17 NORTH RANGE 13 WEST  
LAKE COUNTY MICHIGAN

Plus included in 2 sheets  
Sheet no. 2.  
Copy.



1 inch = 100 ft  
All dimensions are in feet  
or decimals thereof.

SCALE 100

IF 3/4



# Idlewild Terrace No. 5

EAST HALF SOUTHWEST QUARTER SECTION 13 TWP 17 NORTH RANGE 13 WEST LAKE COUNTY MICHIGAN

EXAMINED AND APPROVED  
 May 10-1927  
 Geo. A. Hull

24184

**DEDICATION**  
 Know all men by these presents, That William M. Deason as trustee, have caused the land embraced in the annexed plat to be surveyed, laid out and partitioned to be known as "IDLEWILD TERRACE NO. 5" East half Southwest quarter Sec. 13, T. 17 N. R. 13 W. Lake County Michigan and that the streets, drives, roads and parts are hereby dedicated to the use of the public.

William M. Deason LS, trustee as proper  
 Signed and Sealed in presence of  
Charles C. Hull  
Charles C. Hull  
 State of Michigan ss.  
 County of Lake  
 On this 7th day of April 1927 before me a notary public in and for said county, personally came the above named William M. Deason known to me to be the same person who executed the above dedication and acknowledged the same to be his own free act and deed as such trustee.  
Wm. M. Deason Notary Public  
 My commission expires April 7, 1929

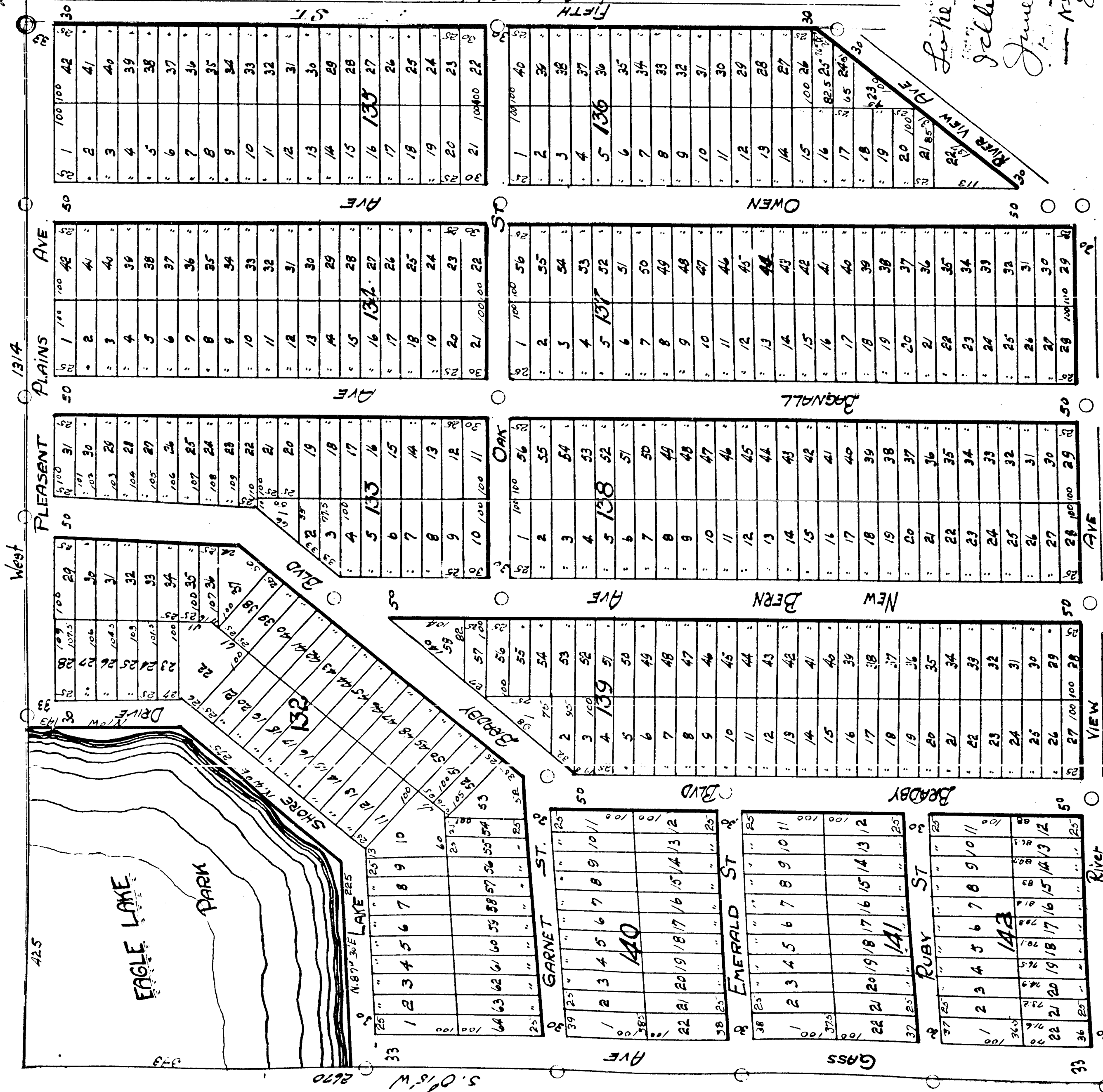
**Surveyors Certificate**  
 I hereby certify that the plat hereon delineated is a correct one and that permanent metal monuments of not less than one inch in diameter and fifteen inches in length, set in a concrete base at least four inches in diameter and forty-eight inches in depth, have been placed at points marked thus  $\odot$  as thereon shown at all angles in the boundaries of the land plotted at all the intersections of streets and at the intersection of streets with the boundaries of the plat as shown on said plat.  
Wm. M. Deason Reg. Surveyor.

**Description of land plotted**  
 The land embraced in the annexed plat of "IDLEWILD TERRACE NO. 5" is described as follows:—  
 Commencing at the quarter post a concrete block in center of Section 13, T. 17 N. R. 13 W.  
 Hence West  $3\frac{1}{4}$  ft, hence S. 0.5° W. 2620 ft, hence N. 87° 5' E. 1306.5 ft, hence N. 0.15° E. 242.2 ft to place of beginning.

**County Treasurers Certificate**  
 Office of County Treasurer, Lake County Michigan  
 I hereby certify that there are no tax liens or titles held by the State on the land described in the annexed plat, that there are no tax liens or titles held by individuals on said lands for the five years preceding the 27th day of April 1927 and that the taxes for said period of five years are paid as shown by the records of this office.  
 Dated this 9th day of May 1927  
 County Treasurer

**Certificates of Approvals**  
 Municipal  
 This plat was approved by the Twp Board of the Twp of PLEASANT PLAINS at a meeting held on the 2nd day of MAY 1927  
 Township Clerk  
 County Board  
 This plat was approved on the 9th day of May 1927  
 Judge of Probate  
 County Clerk  
 County Treasurer

1/4 Post the center of Section 13 17-13  
 Point of beginning  
 Plat included in 2 sheets  
 Sheet No 1 Copy



June 21-1927  
 Geo. A. Hull

May 10-1927  
 Geo. A. Hull

Surveyed and Platted by  
 Geo. H. Johnson - Reg. Sur.  
 Baldwin Michigan

Lothe  
 Published June 11, 1927  
 June 23  
 No. 105 filed - job call  
 Emil Johnson

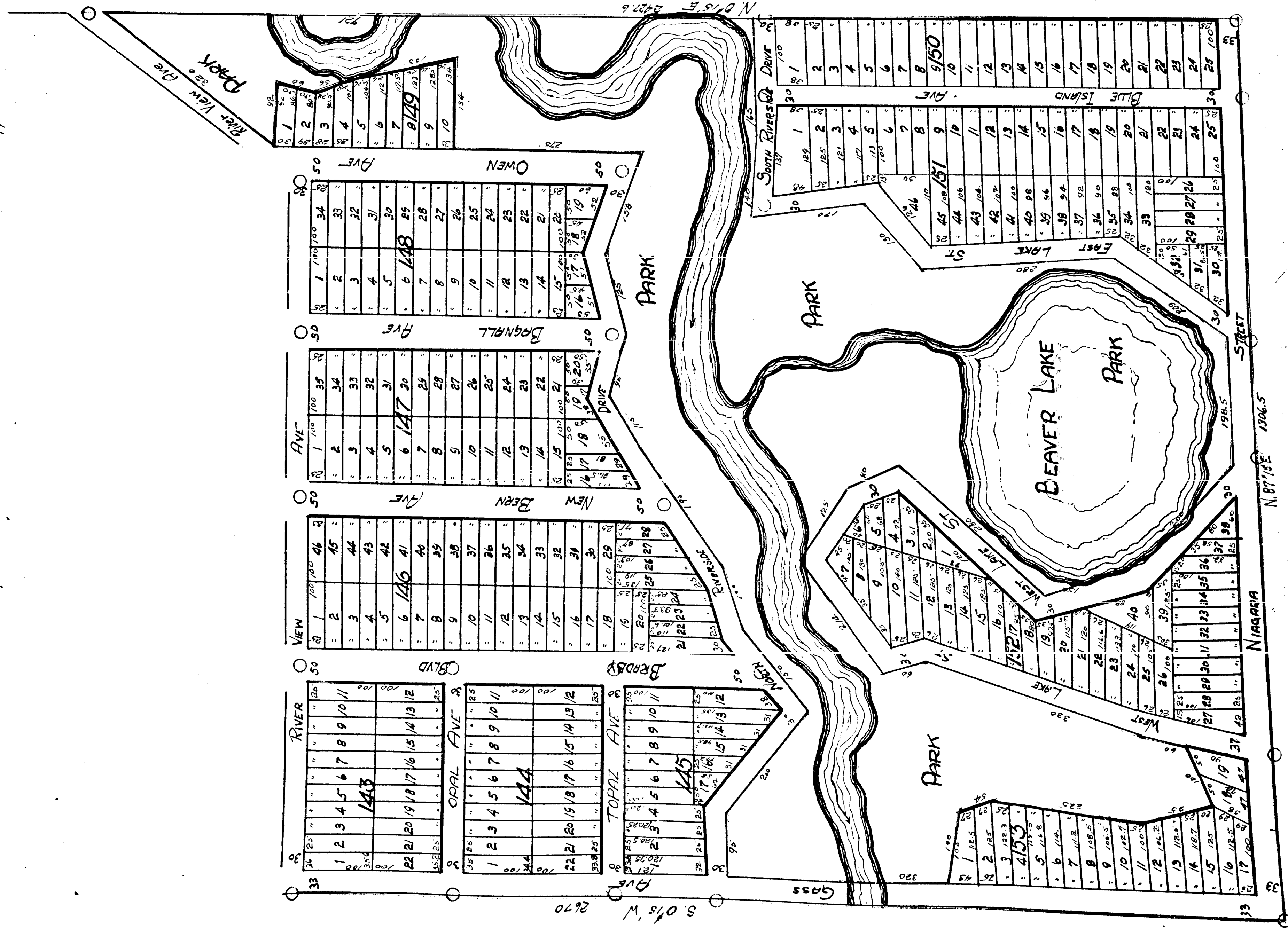


# Idlewild Terrace No. 5

EAST HALF SOUTHWEST QUARTER SECTION 13 TOWNSHIP 17 NORTH RANGE 13 WEST  
LAKE COUNTY MICHIGAN

Plot included in 2 sheets  
Sheet no. 2.

Copy.



SCALE  
1 inch = 100 feet  
All dimensions are in feet  
or decimals thereof.

10/27/27