

54 04
1922

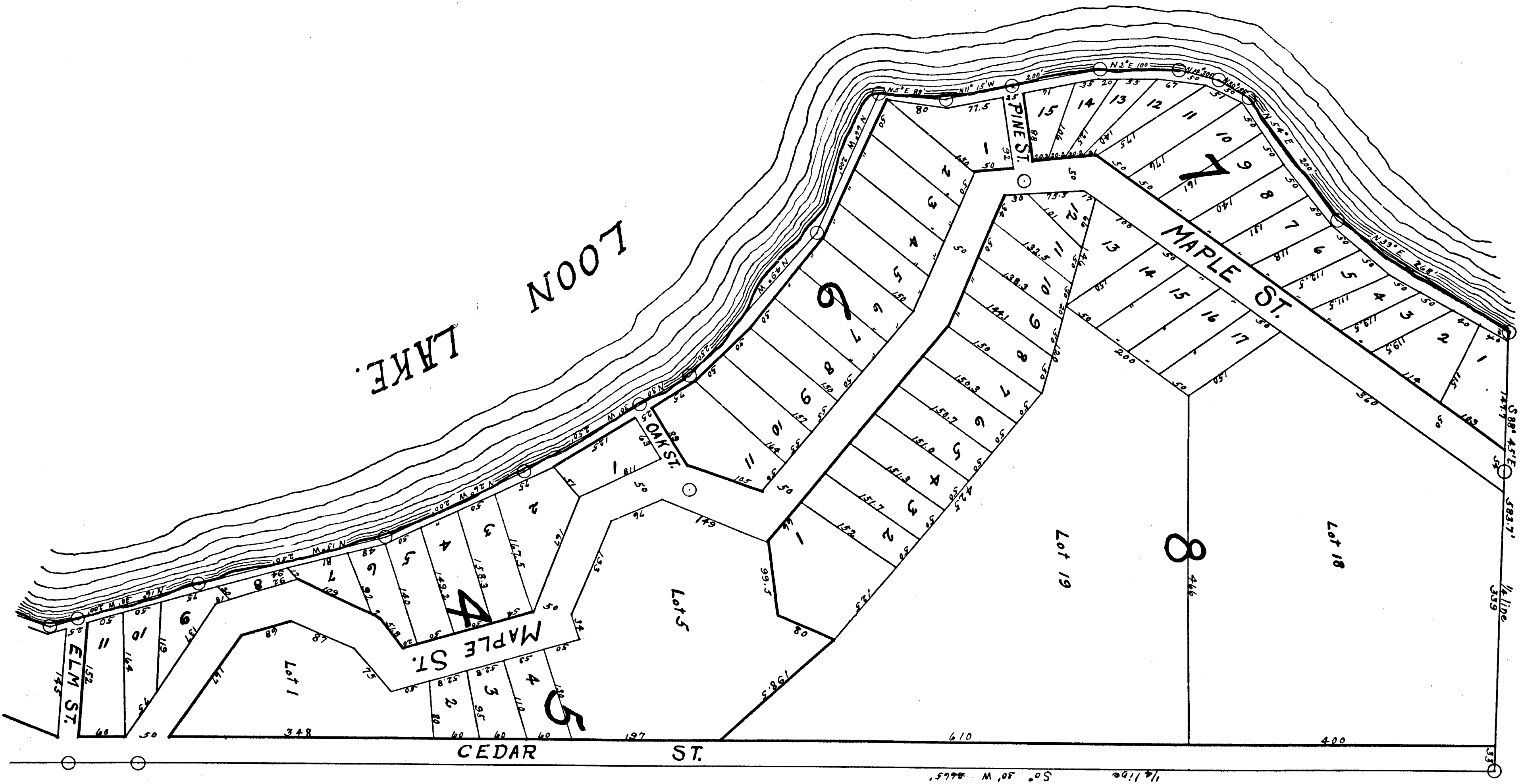
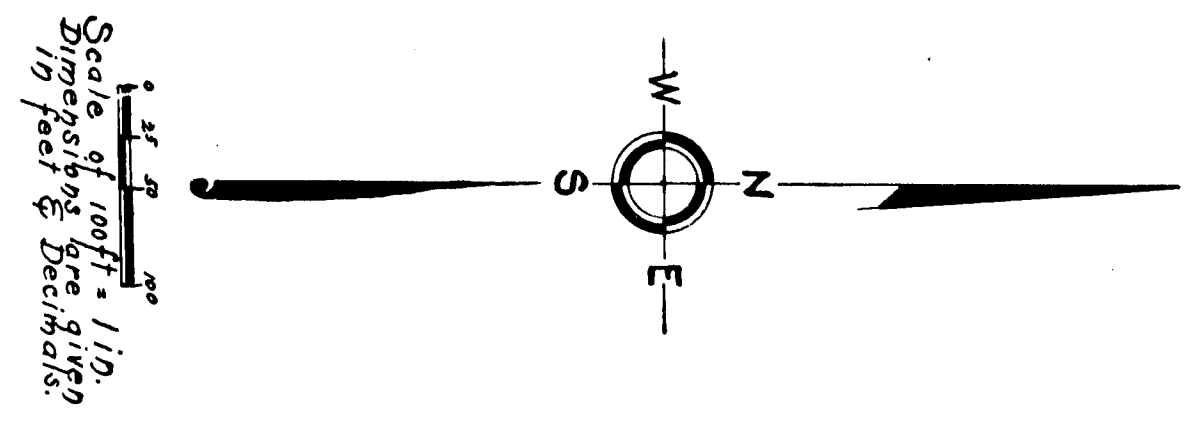
Surveyed & Platted by
Geo. H. Johnson, Reg. C. S. M.
Baldwin & Luffber,
Mich.

"THOMPSON'S LANDING"

Being a part of the S.W. 1/4 Sec. 3, T19N, R14 W.
LAKE COUNTY MICHIGAN.

Plat in 2 Sheets
Sheet # 2.

22612

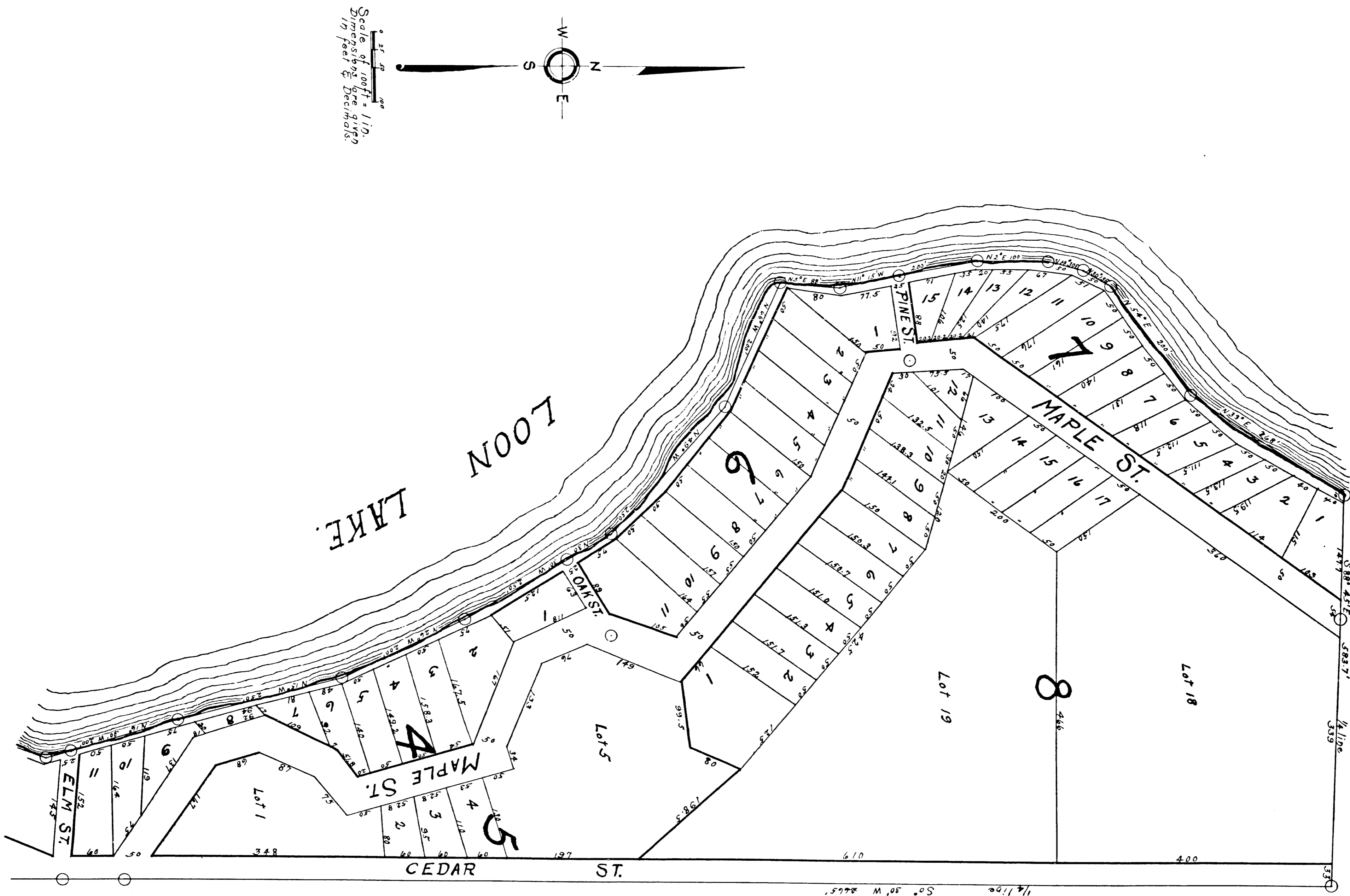


"THOMPSON'S LANDING"

Surveyed & Platted by
Geo. H. Johnson, Reg. Co. Sur.
Baldwin & Lusher,
Mich.

Being a part of the S.W. 1/4 Sec. 3, T19N, R14 W.
LAKE COUNTY MICHIGAN.

Plat in 2 Sheets
Sheet # 2.



Scale of 1 inch = 110 feet.
Dimensions are given in feet & Decimals.