

CERTIFICATE OF MUNICIPAL APPROVAL

This plat was approved by the township board of the township of Peacock at a meeting held on the 7th day of January 1966, and complies with Sec. 19 A and the width of lots is in compliance with requirements of Sec. 30, Act 172, of 1929, as amended.

Mirtle L. Devering Clerk

CERTIFICATE OF APPROVAL BY COUNTY BOARD

This plat was approved on the 7th day of January 1966, by the Lake County Plat Board. This plat appears to include land adjacent to a state highway.

Register of Deeds County Clerk: TART V. UTTER; Chairman Board of Supervisors: JOSEPH MEZESKE; County Treasurer: EARL GIBSON; County Drain Commissioner: CLINTON E. COLE

COUNTY TREASURER'S CERTIFICATE RELATING TO TAXES

Office of County Treasurer Lake County Michigan. I hereby certify, That there are no tax liens or titles held by the State on the lands described hereon, and that there are no tax liens or titles held by individuals on said lands, for the five years preceding the 26 day of Jan 1966 and that the taxes for said period of five years are paid, as shown by the records of this office.

This certificate does not apply to taxes, if any, now in process of collection by township or county collecting officers.

Earl Gibson County Treasurer

CERTIFICATE OF APPROVAL BY BOARD OF COUNTY ROAD COMMISSIONERS

This plat has been examined and was approved on the 7th day of Jan 1966, by the Lake County Board of Road Commissioners.

Chairman: N. E. WICKS; Member: ALFRED KINNEY; Member: ALBERT BERZLEY

DEDICATION

Know all men by these presents, That we Whitney Carnahan as proprietor, and Shirley Ann Carnahan, his wife, have caused the land embraced in the annexed plat to be surveyed, laid out and platted, to be known as " LONE PINE SUBDIVISION ", a part of government lot 3, section 26, T 19 N, R 13 W, Peacock Township, Lake County, Michigan, and that the streets as shown on said plat are hereby dedicated to the use of the public.

Signed and sealed in the presence of:

Howard E. Lloyd Sr. (Notary Public); Whitney Carnahan, Shirley Ann Carnahan (Proprietors)

STATE OF MICHIGAN } ss On this 17 day of JANUARY 1966, before me, a Notary Public, in and for said county, personally came the above named Whitney Carnahan and Shirley Ann Carnahan, his wife, known to me to be the persons who executed the above dedication, and acknowledged the same to be their free act and deed.

Howard V. Rummell Notary Public, Oakland Co., Michigan Acting for county of Lake

My commission expires June 1 1967

SURVEYOR'S CERTIFICATE

I hereby certify that the plat hereon delineated is a correct one, and that permanent metal monuments consisting of iron rods at least one half inch in diameter and thirty-six inches in length encased in concrete cylinder at least four inches in diameter and thirty-six inches in length have been placed at all points marked thus " 0 " as thereon shown at all angles in the boundary of the plat, at the intersection of lines of streets, and at the intersection of the lines of streets with the boundaries of the plat as shown on said plat.

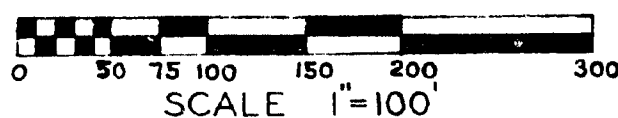
Prepared and Drafted by Whitney Carnahan Registered Land Surveyor # 13029 Whitney Carnahan 1323 Nancywood Court Pontiac, Michigan 48054

APPROVED April 28, 1966 DATE

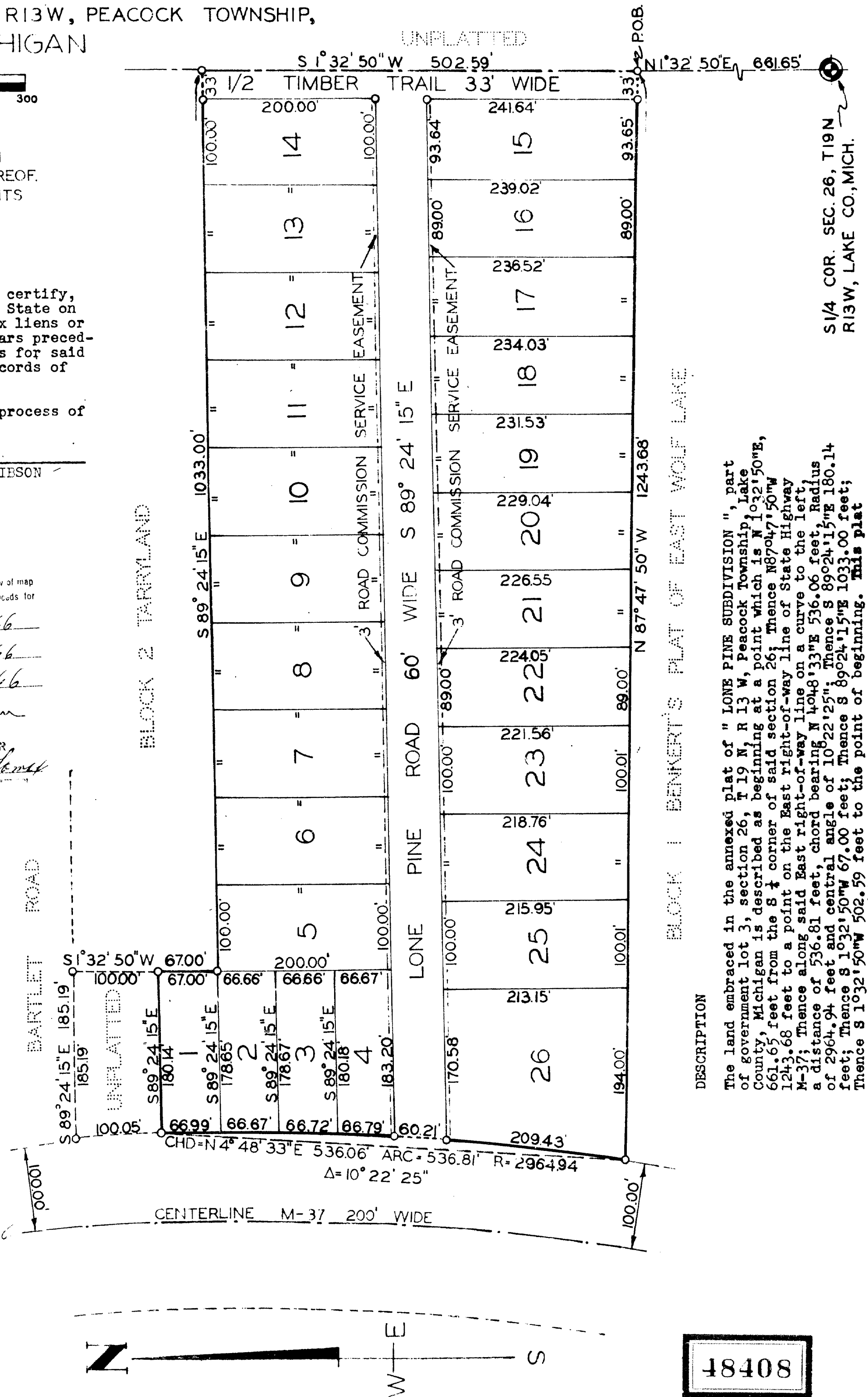
MICHIGAN STATE HIGHWAY COMMISSION HOWARD E. HILL State Highway Director

LONE PINE SUBDIVISION

PART OF GOVERNMENT LOT 3, SEC. 26, T 19N, R 13W, PEACOCK TOWNSHIP, LAKE COUNTY, MICHIGAN



ALL DIMENSIONS ARE IN FEET AND DECIMALS THEREOF. CURVILINEAR MEASUREMENTS ARE ARC LENGTHS.



DESCRIPTION The land embraced in the annexed plat of " LONE PINE SUBDIVISION ", part of government lot 3, section 26, T 19 N, R 13 W, Peacock Township, Lake County, Michigan is described as beginning at a point which is N 1°32'50"E, 661.65 feet from the S & E corner of said section 26; Thence N 87°04'50"W 1243.66 feet to a point on the East right-of-way line of State Highway M-37; Thence along said East right-of-way line on a curve to the left, a distance of 536.81 feet, chord bearing N 4°48'33"E 536.06 feet, Radius of 2964.94 feet and central angle of 10°22'25"; Thence S 89°24'15"E 180.14 feet; Thence S 1°32'50"W 67.00 feet; Thence S 89°24'15"E 1033.00 feet; Thence S 1°32'50"W 502.59 feet to the point of beginning. This plat contains a total of 26 lots.