

HARPER LAKE RESORT NO. 4

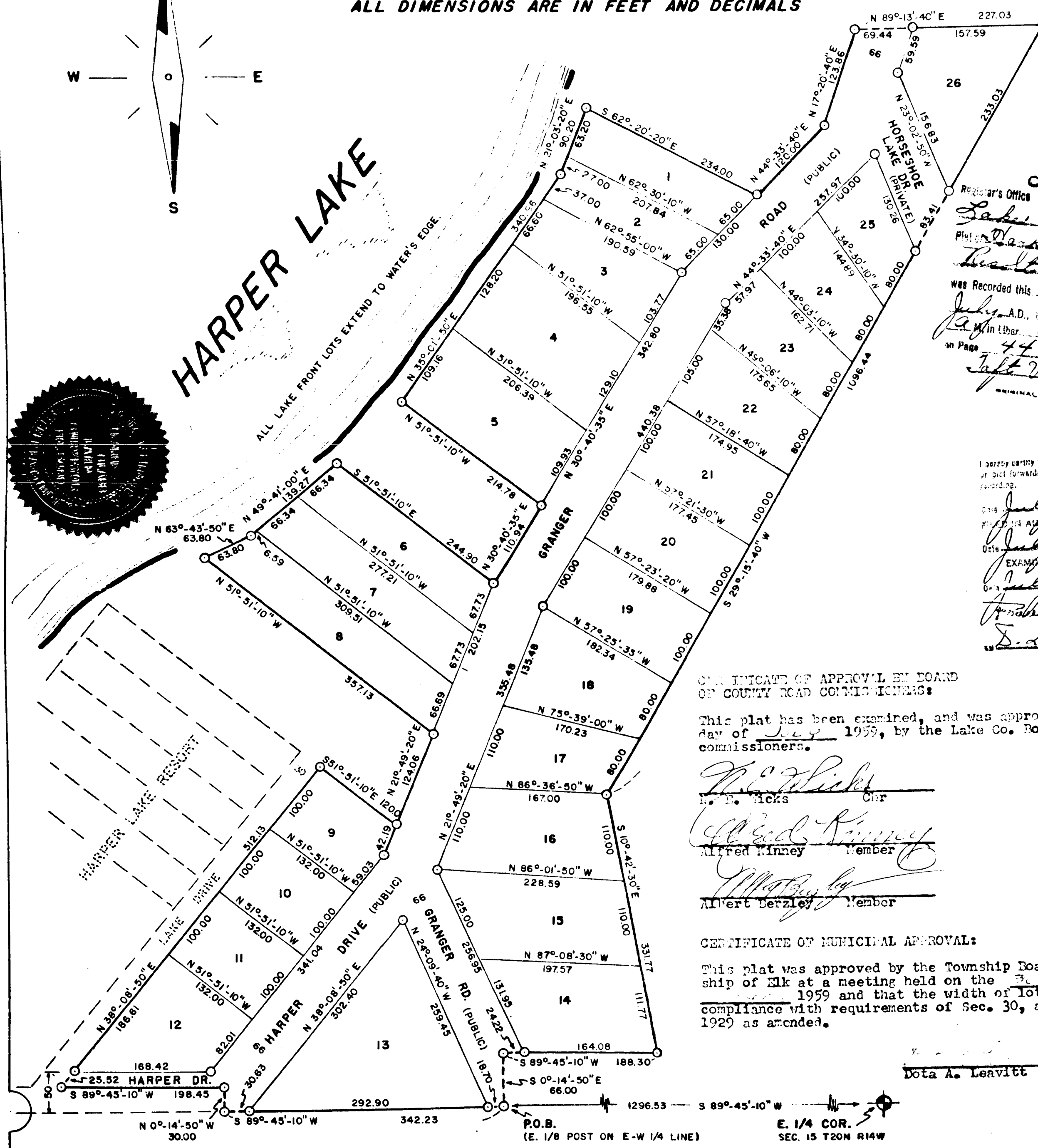
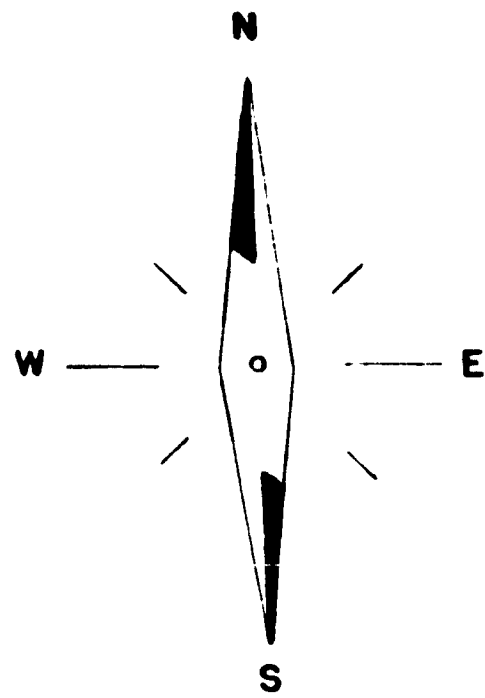
PART OF GOV'T LOT 3 SEC. 15 T20N R14W

ELK TWP.

LAKE CO., MICH.

SCALE
0 50 100 200
1 INCH=100 FEET

ALL DIMENSIONS ARE IN FEET AND DECIMALS



Now all men by these presents, that I Zeta L. Granger, a widow, as proprietor, has caused the land embraced in the annexed plat to be surveyed, laid out and plotted, to be known as "HARPER LAKE RESORT #4", Part of Gov't lot 3, Sec. 15 T20N R14W, Elk Twp., Lake Co., Mich., and that the roads and drives as shown on said plat are hereby dedicated to the use of the public, except that drive shown as Horseshoe Lake Drive, which is private, and is hereby dedicated to the owners of properties in that part of said government lot 3, lying east of the annexed plat of Harper Lake Resort #4. Plat contains total of 30 lots.

Signed and sealed in the presence of;
 Clinton Cole
 Donald Paquette
 Zeta L. Granger (L.S.)

On this 30th day of June 1959, before me, a Notary Public in and for said county, personally came the above named Zeta L. Granger, a widow known to me to be the person who executed the above dedication, and acknowledged the same to be her free act and deed.

My commission expires 12-11-62
 George Blass
 Notary Public
 Lake Co., Mich.

DESCRIPTION:
 The land embraced in the annexed plat of "HARPER LAKE RESORT #4", Part of Gov't. lot 3, Sec. 15, T20N R14W, Elk Twp., Lake Co., Mich., is described as beginning at the E. 1/8 post on the E-W 1/4 line, said point being 289°-45'-10"W along the E-W 1/4 line, 1296.53 feet from the E 1/4 Cor. Sec. 15, T20N R14W, thence S89°-45'-10"W along said E-W 1/4 line 342.23 feet, thence N0°-14'-50"W 30.00 feet, thence S89°-45'-10"W 198.45 feet, thence N38°-08'-30"E 512.13 feet, thence S51°-51'-10"W 120.00 feet, thence N21°-49'-20"E 124.06 feet, thence N51°-51'-10"W 357.13 feet, thence N63°-43'-50"E 63.80 feet, thence N49°-41'-00"E 139.27 feet, thence S51°-51'-10"W 244.90 feet, thence N30°-40'-35"E 110.94 feet, thence N51°-51'-10"W 214.78 feet, thence N35°-01'-50"E 340.96 feet, thence N21°-03'-20"E 90.20 feet, thence S62°-20'-20"E 234.00 feet, thence N44°-33'-40"W 120.00 feet, thence N17°-20'-40"E 123.86 feet, thence N89°-13'-40"W 227.03 feet, thence S29°-15'-40"W 1096.44 feet, thence S10°-14'-30"E 331.77 feet, thence S89°-45'-10"W 188.30 feet, thence S0°-14'-50"E 66.00 feet to the point of beginning.

CERTIFICATE OF APPROVAL BY BOARD OF COUNTY ROAD COMMISSIONERS:
 This plat has been examined, and was approved on the 30th day of July 1959, by the Lake Co. Board of Road commissioners.
 H. P. Hicks, Chm.
 Alfred Kinney, Member
 Albert Berzley, Member

CERTIFICATE OF MUNICIPAL APPROVAL:
 This plat was approved by the Township Board of the Township of Elk at a meeting held on the 30th day of July 1959 and that the width of lots is in compliance with requirements of Sec. 30, act 172 of 1929 as amended.
 Dora A. Leavitt, Twp. Clerk

COUNTY TREASURER'S CERTIFICATE RELATING TO TAXES:
 ...Office of the county treasurer, Lake County, Mich....
 I hereby certify, that there are no tax liens or titles held by the State on the lands hereon described, and that there are no tax liens or titles held by individuals on said lands, for the five (5) years preceding the 30th day of June 1959 and that the taxes for said period of five (5) years are paid, as shown by the records of this office. This certificate does not apply to taxes, if any, now in the process of collection by township, city or village collecting officers.
 Earl Gibson, County Treasurer

CERTIFICATE OF APPROVAL BY COUNTY BOARD:
 This plat was approved on the 30th day of July 1959 by the Lake County Plat Board.
 Earl Gibson, County Treasurer

CERTIFICATE OF APPROVAL BY COUNTY BOARD:
 This plat was approved on the 30th day of July 1959 by the Lake County Plat Board.
 Robert A. Griffin, Brain Comm.
 Gary Burnet, Chm. Bd. of Supr.

COPY
 Register's Office
 Lake County, Mich.
 Recorded this 11th day of July A.D. 1959 at 10:00 AM in Lib. 2 of plate 44
 T. V. Utter, Register of Deeds

41969