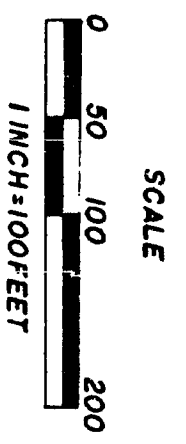


LYNDA ACRES

PART OF GOV'T LOTS 2 & 3 SEC. 23
T17N R14W, LAKE TWP,
LAKE CO., MICH.

SHEET NO. 1 OF 2 SHEETS



DEDICATION:
KNOW ALL MEN BY THESE PRESENTS THAT WE, ELMER C. LAUBAUGH AS PROPRIETOR AND SARAH J. LAUBAUGH HIS WIFE, HAVE CAUSED THE LAND EMBRACED IN THE ANNEXED PLAT TO BE SURVEYED, LAID OUT AND PLATTED TO BE KNOWN AS "LYNDA ACRES" PART OF GOV'T LOTS 2 & 3 SEC. 23, T17N R14W, LAKE TWP, LAKE CO., MICH., AND THAT STAR LAKE ROAD AND EVERGREEN ROAD ARE DEDICATED TO THE PUBLIC AND RANGER ROAD IS PRIVATE AND DEDICATED TO THE USE OF THE LOT OWNERS IN SAID PLAT.

SIGNED AND SEALED IN THE PRESENCE OF:

George Blass WITNESS
Clinton Cole WITNESS

Elmer C. Laubough
ELMER C. LAUBAUGH
Sarah J. Laubough
SARAH J. LAUBAUGH

STATE OF MICHIGAN,
COUNTY OF LAKE

ON THIS 24th DAY OF Sept 1962, BEFORE ME, A NOTARY PUBLIC IN AND FOR SAID COUNTY, PERSONALLY CAME THE ABOVE NAMED ELMER C. LAUBAUGH AND SARAH J. LAUBAUGH, HIS WIFE, KNOWN TO ME TO BE THE PERSONS WHO EXECUTED THE ABOVE DEDICATION, AND ACKNOWLEDGED THE SAME TO BE THEIR FREE ACT AND DEED.

MY COMMISSION EXPIRES
DEC. 11, 1962:

George Blass
GEORGE BLASS
NOTARY PUBLIC LAKE CO., MICH.

CERTIFICATE OF APPROVAL BY THE COUNTY BOARD OF ROAD COMMISSIONERS:
THIS PLAT HAS BEEN EXAMINED AND WAS APPROVED ON THE 14th DAY OF Sept, 1962, BY THE LAKE COUNTY BOARD OF ROAD COMMISSIONERS:

Alfred Kinney CHAIRMAN
ALFRED KINNEY MEMBER

Albert Berzley MEMBER
ALBERT BERZLEY MEMBER

CERTIFICATE OF MUNICIPAL APPROVAL:

THIS PLAT WAS APPROVED BY THE TOWNSHIP BOARD OF THE TOWNSHIP OF LAKE AT A MEETING HELD ON THE 14th DAY OF Sept, 1962 AND IS IN COMPLIANCE WITH SECTION 19A AND THE WIDTH OF THE LOTS CONFORM WITH REQUIREMENTS OF SECTION 30, ACT 172, OF 1929, AS AMENDED.

Merrill Maddox
MERRILL MADDOX
TWP. CLERK

DESCRIPTION:
THE LAND EMBRACED IN THE ANNEXED PLAT OF "LYNDA ACRES" PART OF GOV'T LOTS 2 & 3 SEC. 23, T17N R14W, LAKE TWP, LAKE COUNTY, MICH., IS DESCRIBED AS BEGINNING AT THE C1/4 COR. OF SAID SEC. 23, THENCE S. 89° 18' 30" E. ALONG THE E. & W. 1/4 LINE OF SAID SEC. 23 1330.70 FEET, THENCE N. 0° 45' 30" W. 1734.75 FEET, THENCE S. 68° 57' 00" W. 153.64 FEET, THENCE S. 73° 25' 00" W. 135.70 FEET, THENCE S. 85° 39' 00" W. 226.37 FEET, THENCE N. 76° 20' 50" W. 248.31 FEET, THENCE N. 70° 20' 20" W. 177.17 FEET, THENCE N. 54° 16' 40" W. 125.36 FEET, THENCE N. 22° 47' 40" W. 109.25 FEET, THENCE N. 4° 25' 40" W. 249.85 FEET, THENCE N. 8° 58' 50" E. 219.29 FEET, THENCE N. 89° 02' 00" W. 296.23 FEET, THENCE N. 89° 1' 50" W. 211.08 FEET, THENCE S. 13° 04' 25" W. 436.82 FEET, THENCE S. 26° 44' 25" W. 695.59 FEET, THENCE S. 89° 15' 10" E. 635.20 FEET TO THE N. & S. 1/4 LINE OF SAID SEC. 23, THENCE S. 0° 37' 50" E. ALONG SAID 1/4 LINE 1316.94 FEET TO THE POINT OF BEGINNING.
PLAT CONTAINS A TOTAL OF SIXTY-TWO (62) LOTS.

SURVEYOR'S CERTIFICATE:
I HEREBY CERTIFY THAT THE PLAT HERE DELINEATED IS A CORRECT ONE, AND THAT PERMANENT METAL MONUMENTS CONSISTING OF IRON BARS NOT LESS THAN ONE-HALF INCH IN DIAMETER AND THIRTY-SIX INCHES IN LENGTH ENCASED IN CONCRETE CYLINDERS AT LEAST FOUR INCHES IN DIAMETER AND THIRTY-SIX INCHES IN DEPTH, HAVE BEEN PLACED AT ALL POINTS MARKED IN THIS PLAT AS THEREON, SHOWN AT ALL ANGLES, THE BOUNDARIES OF THE LAND PLATTED, AT ALL INTERSECTIONS OF ROADS, AND AT ALL INTERSECTIONS OF ROADS WITH THE BOUNDARIES OF THE PLAT AS THEREON SHOWN ON SAID PLAT.

George Blass
GEORGE BLASS
R.L.S. NO. 5489

COUNTY TREASURER'S CERTIFICATE
RELATING TO TAXES:

OFFICE OF THE COUNTY TREASURER LAKE CO., MICH.
I HEREBY CERTIFY THAT THERE ARE NO TAX LIENS OR TITLES HELD BY THE STATE ON THE LANDS HEREON DESCRIBED, AND THAT THERE ARE NO TAX LIENS OR TITLES HELD BY INDIVIDUALS ON SAID LANDS, FOR THE FIVE YEARS PRECEDING THE 14th DAY OF Sept, 1962, AND THAT THE TAXES FOR SAID PERIOD OF FIVE YEARS ARE PAID, AS SHOWN BY THE RECORDS OF THIS OFFICE.
THIS CERTIFICATE DOES NOT APPLY TO TAXES, IF ANY, NOW IN THE PROCESS OF COLLECTION, BY TOWNSHIP OR COUNTY COLLECTING OFFICERS.

Earl Gibson
EARL GIBSON
CO. TREASURER

CERTIFICATE OF APPROVAL BY THE COUNTY BOARD:
THIS PLAT WAS APPROVED ON THE 12th DAY OF Oct, 1962, BY

Taft Vutler CO. CLERK

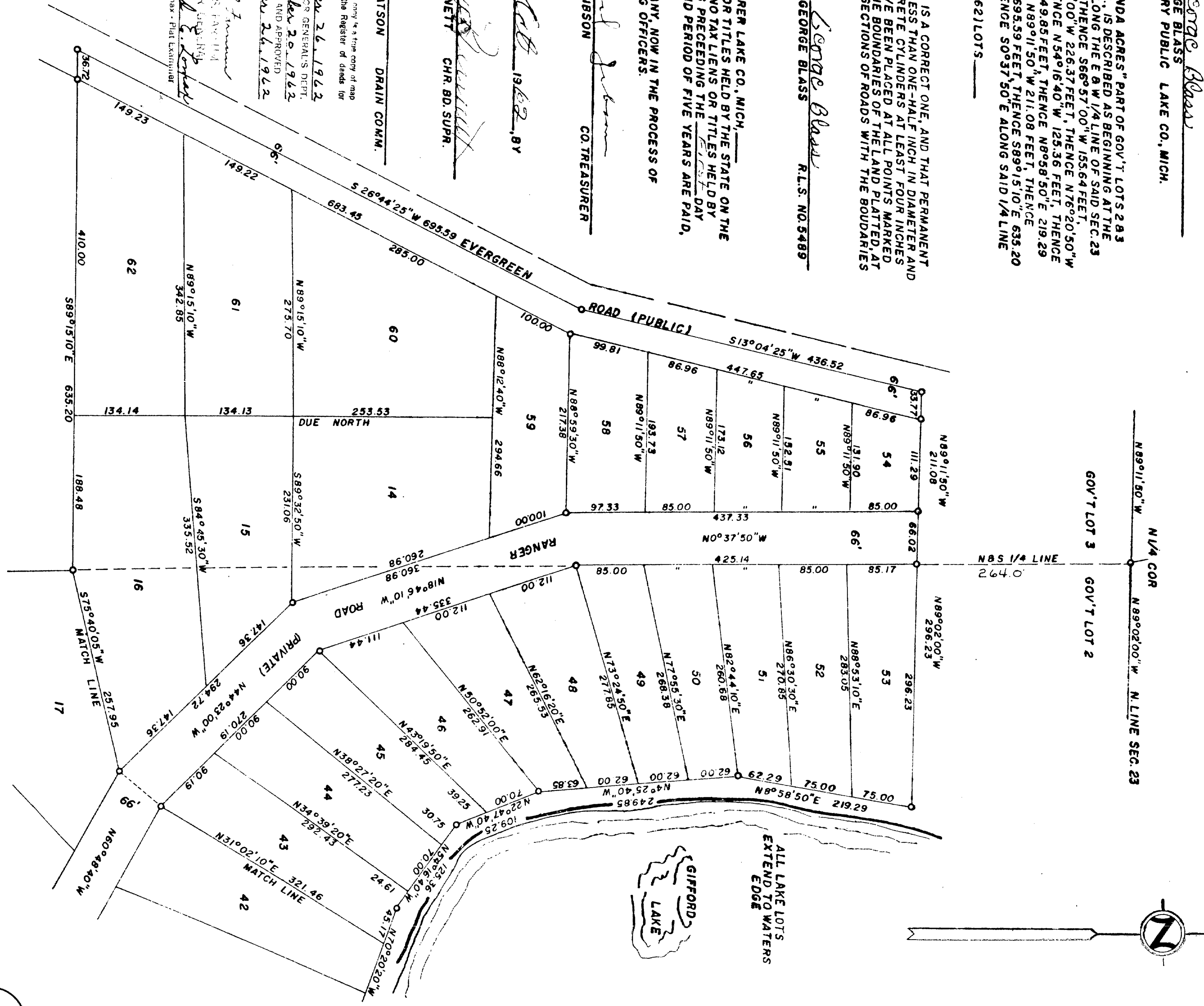
Gary Burnett CHR. BD. SUPR.

Earl Gibson CO. TREAS.

John R. Matson DRAIN COMM.

Register's Office
County, } S. S.
Plat of
Lynda Acres
Filed for Record this 29th day of
Oct, 1962, in Liber 3, at
2:14-15 p.m.
John R. Matson
Register

Therby certifies this copy is a true copy of map or plat recorded in the Register of Deeds for
County, } S. S.
Date, October 26, 1962
By, John R. Matson GENERAL'S DEPT.
Richard E. L. Max NOTARY PUBLIC
Notary Public and Approved
Date, October 26, 1962
By, Richard E. L. Max
Richard E. L. Max - Plat Examiner

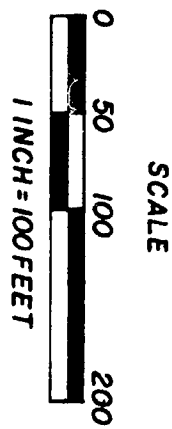


LYNDOR ACRES

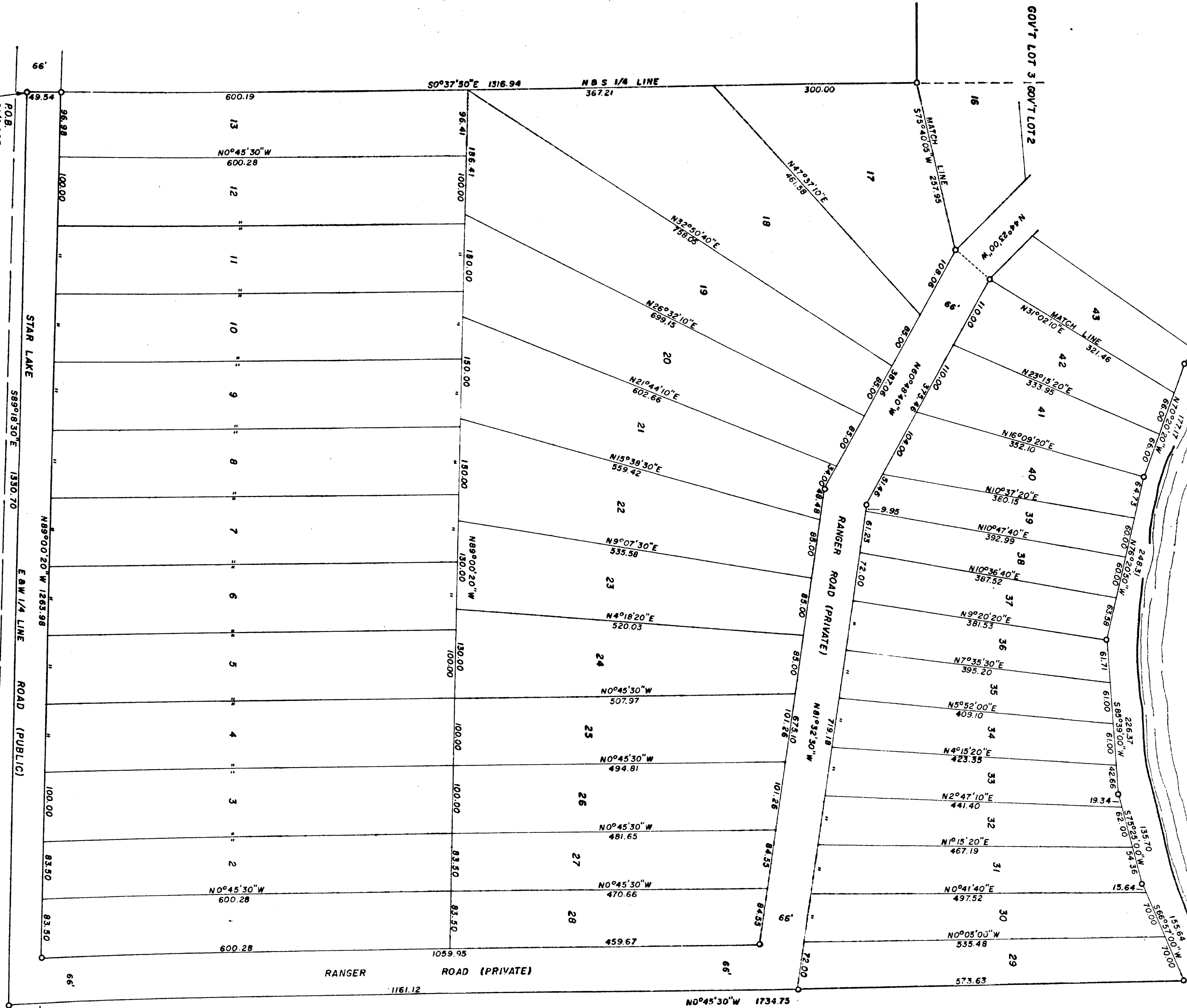
PART OF GOV'T LOTS 2 & 3 SEC. 23
T17N R14W, LAKE TWP.
LAKE CO, MICH.

ALL DIMENSIONS ARE IN FEET AND DECIMALS

SHEET NO. 2 OF 2 SHEETS



ALL LAKE FRONT LOTS EXTEND
TO WATERS EDGE.



BLASS SURVEYS
BALDWIN, MICH.

ROB.
C/4 COR.
SEC. 23 T17N R14W

452910