

# STEELHEAD RUN ESTATES ON THE LITTLE MANISTEE RIVER PLAT NUMBER ONE

PART OF THE NORTH 1/2, SECTION 13, T19N, R12W  
NEWKIRK TOWNSHIP & VILLAGE OF LUTHER  
LAKE COUNTY, MICHIGAN

THIS PLAT IS SUBJECT TO RESTRICTIONS AS  
REQUIRED BY G.L.T. 288 OF 1967, AS AMENDED  
ON CERTAIN LOTS WITH RESPECT TO THE  
REQUIREMENTS OF THE MICHIGAN DEPARTMENT  
OF NATURAL RESOURCES AND/OR THE MICHIGAN  
DEPARTMENT OF PUBLIC HEALTH, WHICH ARE  
RECORDED IN LIBER 113, PAGES 442 & 446  
OF RECORDS OF THIS COUNTY.

SURVEYED AND PLATTED  
BY  
GLAZA AND ASSOCIATES  
ENGINEERS AND SURVEYORS  
GRAND RAPIDS, MICHIGAN

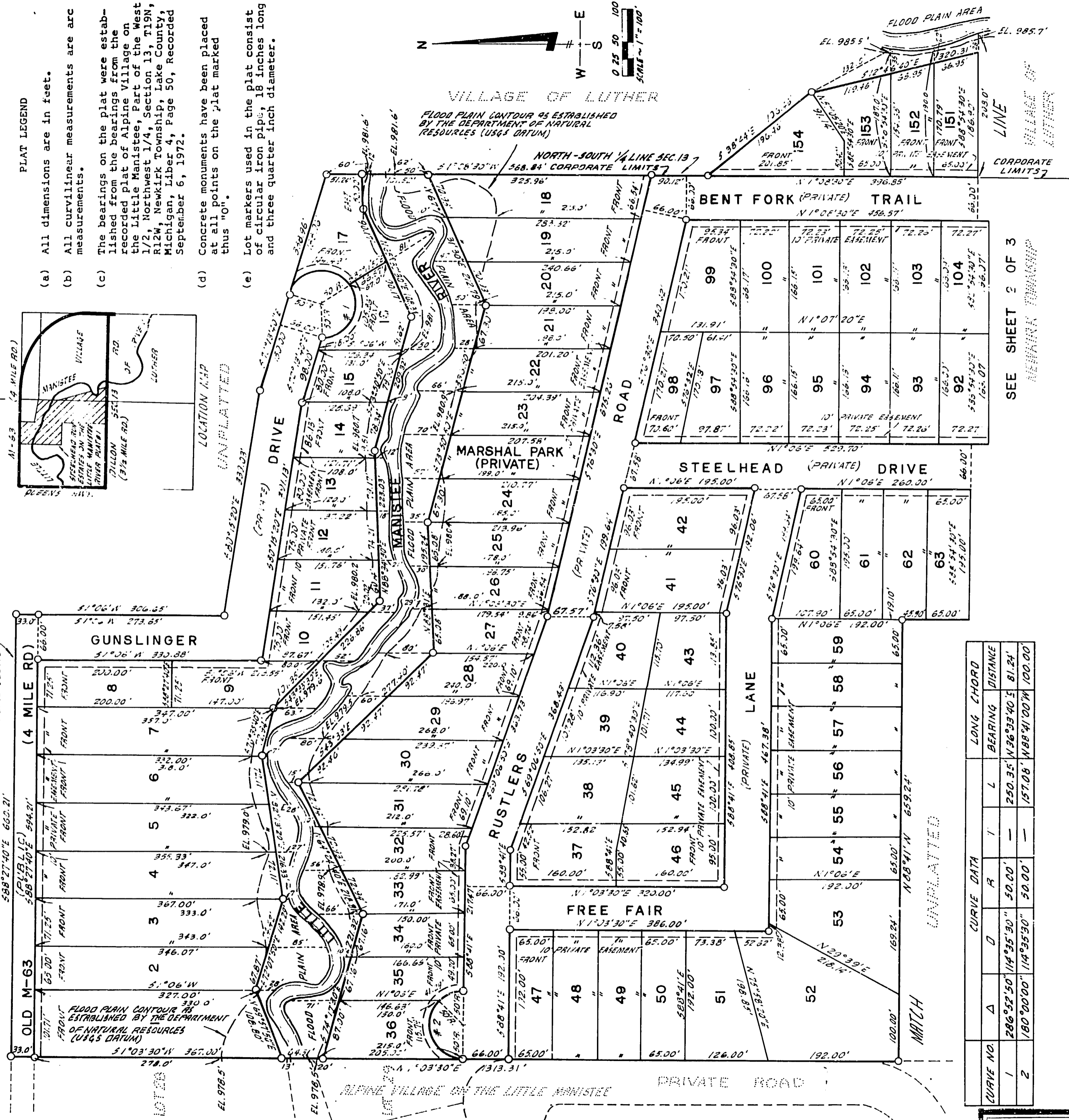
SHEET 1 OF 3

UNPLATTED

UNPLATTED

PLAT LEGEND

- (a) All dimensions are in feet.
- (b) All curvilinear measurements are arc measurements.
- (c) The bearings on the plat were established from the bearings from the recorded plat of Alpine Village on the Little Manistee, Part of the West 1/2, Northwest 1/4, Section 13, T19N, R12W, Newkirk Township, Lake County, Michigan, Liber 4, Page 50, Recorded September 6, 1972.
- (d) Concrete monuments have been placed at all points on the plat marked thus "0".
- (e) Lot markers used in the plat consist of circular iron pipe, 18 inches long and three quarter inch diameter.



CURVE NO.	Δ	D	R	T	L	LONG CHORD BEARING	DISTANCE
1		286°52'50"	14°35'30"	50.00'	—	250.35' N 26°33'40"E	81.24'
2		180°00'00"	114°35'30"	50.00'	—	157.08' N 88°41'00"W	100.00'

53497

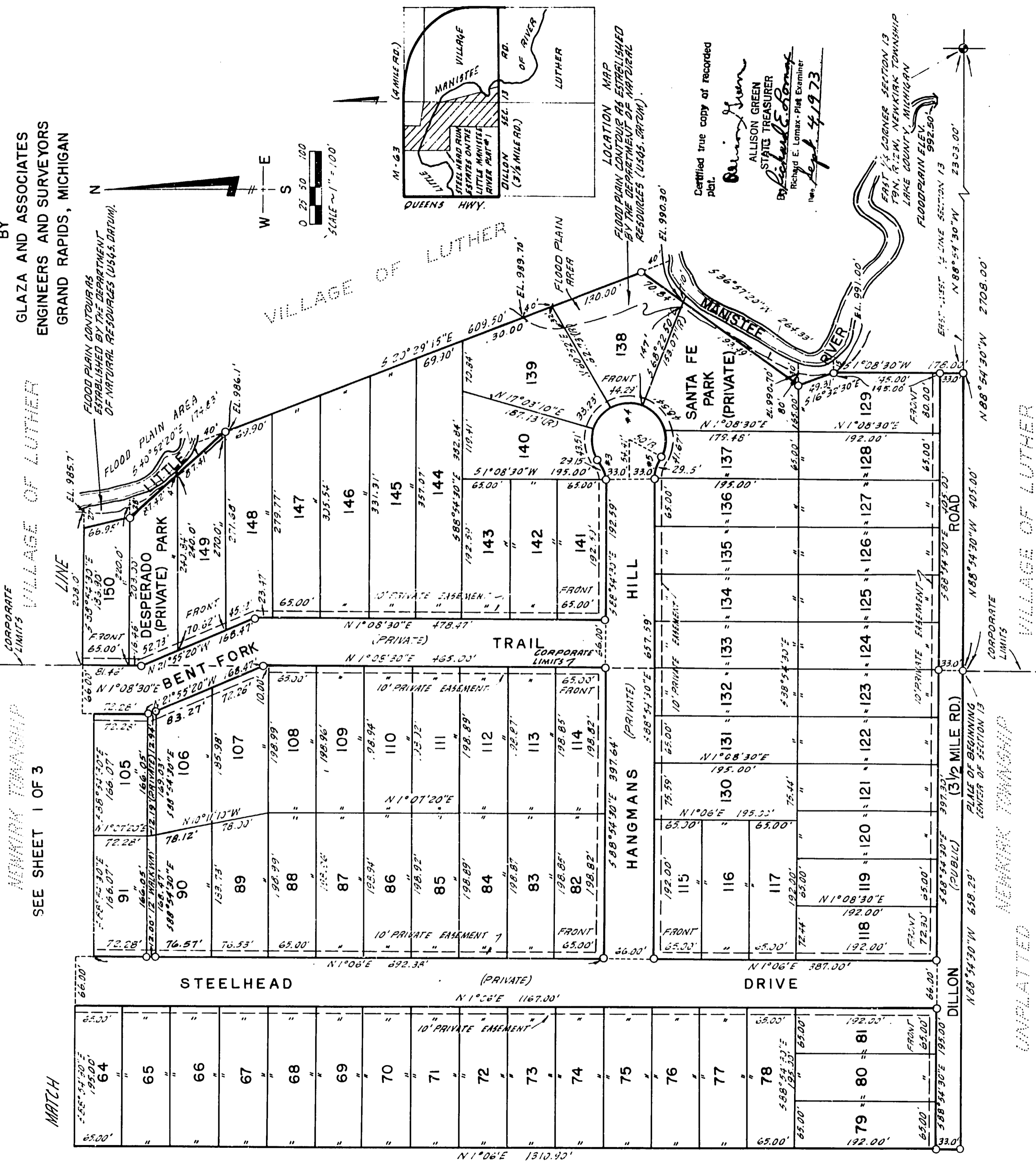


# STEELHEAD RUN ESTATES ON THE LITTLE MANISTEE RIVER PLAT NUMBER ONE

SHEET 2 OF 3

PART OF THE NORTH 1/2, SECTION 13, T19N, R12W  
NEWKIRK TOWNSHIP & VILLAGE OF LUTHER  
LAKE COUNTY, MICHIGAN

SURVEYED AND PLATTED  
BY  
GLAZA AND ASSOCIATES  
ENGINEERS AND SURVEYORS  
GRAND RAPIDS, MICHIGAN



PLAT LEGEND

- (a) All dimensions are in feet.
- (b) All curvilinear measurements are arc measurements.
- (c) The bearings on the plat were established from the bearings from the recorded plat of Alpine Village on the Little Manistee, Part of the West 1/2, Northwest 1/4, Section 13, T19N, R12W, Newkirk Township, Lake County, Michigan, Liber 4, Page 50, Recorded September 6, 1972.
- (d) Concrete monuments have been placed at all points on the plat marked thus "0".
- (e) Lot markers used in the plat consist of circular iron pipe, 18 inches long and three quarter inch diameter.

CURVE NO.	Δ	D	R	T	L	BEARING	CHORD	DIAMETER
# 3	33°54'	147°55'30"	50.00'	15.24'	27.55'	N 72°02'30"E	23.15'	
# 4	247°48'	114°55'40"	50.00'	21.67'	27.55'	N 1°05'30"E	88.00'	
# 5	33°54'	114°55'40"	50.00'	15.24'	27.55'	S 72°02'30"E	23.15'	

53497



# STEELHEAD RUN ESTATES ON THE LITTLE MANISTEE RIVER PLAT NUMBER ONE PART OF THE NORTH 1/2, SECTION 13, T19N, R12W NEWKIRK TOWNSHIP & VILLAGE OF LUTHER LAKE COUNTY, MICHIGAN

TO THE PLACE OF BEGINNING (CENTER OF SECTION 13), THENCE NORTH 88° 54' 30" WEST ALONG THE EAST - WEST 1/4 LINE OF SAID SECTION 658.29 FEET.

**SURVEYOR'S CERTIFICATE**  
I, Edward J. Glaza, Jr., surveyor, certify:

That I have surveyed, divided and mapped the land shown on this plat, described as follows: STEELHEAD RUN ESTATES ON THE LITTLE MANISTEE RIVER PLAT NUMBER ONE, Part of the North 1/2, Section 13, T19N, R12W, NEWKIRK TOWNSHIP AND VILLAGE OF LUTHER, LAKE COUNTY, MICHIGAN. COMMENCING AT THE EAST 1/4 CORNER OF SAID SECTION 13; thence North 88° 54' 30" West along the East-West One-Quarter line of said Section 2708.00 feet; thence North 1° 06' 00" East 1310.90 feet; thence North 88° 41' 00" West 659.24 feet; thence North 1° 03' 30" East 1313.31 feet; thence South 88° 27' 40" East along the North line of said Section 660.21 feet; thence South 1° 06' 00" West 306.65 feet; thence South 80° 15' 20" East 339.03 feet; thence South 72° 13' 40" East 338.96 feet; thence South 1° 08' 30" West along the North-South One-Quarter line of said Section 568.84 feet; thence South 38° 44' 00" East 196.46 feet; thence South 12° 46' 40" East 320.31 feet; thence South 40° 52' 20" East 174.83 feet; thence South 20° 29' 15" East 609.50 feet; thence South 36° 57' 20" West 264.33 feet; thence South 16° 32' 30" East 49.31 feet; thence South 1° 08' 30" West 178.00 feet; thence North 88° 54' 30" West along the East-West One-Quarter line of said Section 405.00 feet to the place of beginning. This plat contains 154 lots and three private parks.

That I have made such survey, land-division and plat by the direction of the owners of such land.

That such plat is a correct representation of all the exterior boundaries of the land surveyed and the subdivision of it.

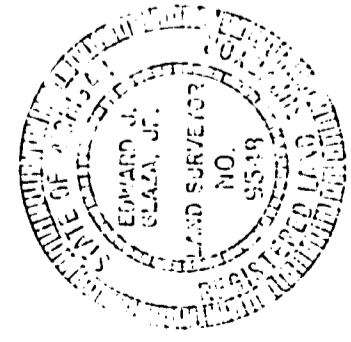
That the required monuments and lot markers have been located in the ground or that surety has been deposited with the municipality, as required by section 125 of the act.

That the accuracy of survey is within the limits required by section 126 of the act.

That the bearings shown on the plat are expressed as required by section 126(3) of the act and as explained in the legend.

Date July 21, 1972

Glaza and Associates  
Engineers and Surveyors  
4056 Plainfield Ave., N.E.  
Grand Rapids, Michigan 49505



Edward J. Glaza, Jr.  
Edward J. Glaza, Jr., Owner  
Registered Land Surveyor No. 9548

LOTS 1 THROUGH 7, 9 THROUGH 36 AND MARSHALL PARK EXTEND TO THE THRESH OF THE LITTLE MANISTEE RIVER. LOT 10 MEETS ENTAILING ANY PARTS OF THE THRESH OF THE LITTLE MANISTEE RIVER SUBJECT TO THE CORRELATIVE RIGHTS OF OTHER ADJACENTS AND THE PUBLIC TRUST IN THESE WATERS. ALSO, LOTS 129, 138, 149 THROUGH 153 INCLUSIVE, AND SANTA FE AND DESPERADO PARK EXTEND TO THE WATERS EDGE.

**PROPRIETOR'S CERTIFICATE-INDIVIDUAL**

I, as proprietor, certify that I caused the land embraced in this plat to be surveyed, divided, mapped and dedicated as represented on this plat. GUNSLINGER DRIVE, RUSTLERS ROAD, FREEFIRE LANE, BENT PORK TRAIL, STEELHEAD DRIVE, AND HANNAH'S HILL ARE PRIVATE STREETS, AND ARE FOR THE USE OF THE LOT OWNERS IN SAID PLAT.

Also a private easement over a 10.0 foot strip on the street side of all lots, as shown on said plat, is hereby reserved for the installation and maintenance of underground wires and appurtenances of the Telephone Company and Consumers Power Company and that no permanent structures other than those relating to said utilities are permitted within said easement. ALSO, WALKWAYS, as shown on said plat, are private and dedicated to the use of the lot owners in said plat. All other easements are for the uses shown on the plat. Marshal Park, Desperado Park and Santa Fe Park are private parks and are for the use of the lot owners in the plat.

Witness:

Harlan L. Schuette  
Harlan L. Schuette

Walter A. Bayak  
Walter A. Bayak  
Route #1, Box 244,  
Baldwin, Michigan 49304

Charles E. Fricke  
Charles E. Fricke

SHEET 3 OF 3

ACKNOWLEDGEMENT

State of Michigan )  
Lake County ) S.S.

July Personally came before me this 21<sup>st</sup> day of July, 1972, the above named Walter A. Bayak, DIVORCED, TO ME known to be the person who executed the foregoing instrument and acknowledged that he executed the same as his free act and deed.

Notary Public, Edward J. Glaza, Jr., Kent County, Michigan  
Edward J. Glaza, Jr., Acting in Lake County  
My commission expires February 9, 1973.

**COUNTY TREASURER'S CERTIFICATE**

The records in my office show no unpaid taxes or special assessments for the five years preceding APRIL 16, 1973 involving the lands included in this plat.

Ruth J. Updegraff  
RUTH J. UPDEGRAFF - County Treasurer  
Lake County

**CERTIFICATE OF COUNTY ROAD COMMISSIONERS**

Approved on April 19, 1973 as complying with Section 183 of Act 288, P.A. 1967 and the applicable published rules and regulations of the Board of Road Commissioners of Lake County.

Nelson E. Wicks  
Nelson E. Wicks - Chairman  
Alfred Kinney  
Alfred Kinney - Member  
Albert Berzley  
Albert Berzley - Member

**CERTIFICATE OF MUNICIPAL APPROVAL**

I certify that this plat was approved by the Township Board of the Township of Newkirk, at a meeting held APRIL 24, 1973 with Act 288, P.A. 1967, and was reviewed and found to be in compliance with Act 288, P.A. 1967, including Section 192 of said Act. The plat was approved by the District Health Department No. 5 on JULY 20, 1972 AND MAY 24, 1973

Mary E. Kessler  
Mary E. Kessler - Clerk

**CERTIFICATE OF MUNICIPAL APPROVAL**

I certify that this plat was approved by the Village Council of the Village of Luther, at a meeting held APRIL 24, 1973 with Act 288, P.A. 1967, and was reviewed and found to be in compliance with Act 288, P.A. 1967, including Section 192 of said Act. The plat was approved by the District Health Department No. 5 on JULY 20, 1972 AND MAY 24, 1973

Patricia Pacola  
Patricia Pacola - Clerk

**COUNTY PLAT BOARD CERTIFICATE**

This plat has been reviewed and is approved by the Lake County Plat Board on June 14, 1973 as being in compliance with all of the provisions of Act 288, P.A. 1967, and the plat board's applicable rules and regulations.

Lucinda K. Keefer  
LUCINDA K. KEEFER - County Clerk,  
Register of Deeds  
Ruth J. Updegraff  
RUTH J. UPDEGRAFF - Treasurer

**RECORDING CERTIFICATE**

State of Michigan )  
Lake County )

This plat was received for record on the 15 day of August A.D. 1973 at 3:00 P.M., recorded in Liber 5 of plats on pages 13, 14, 15.

Lucinda K. Keefer  
LUCINDA K. KEEFER - Register of Deeds