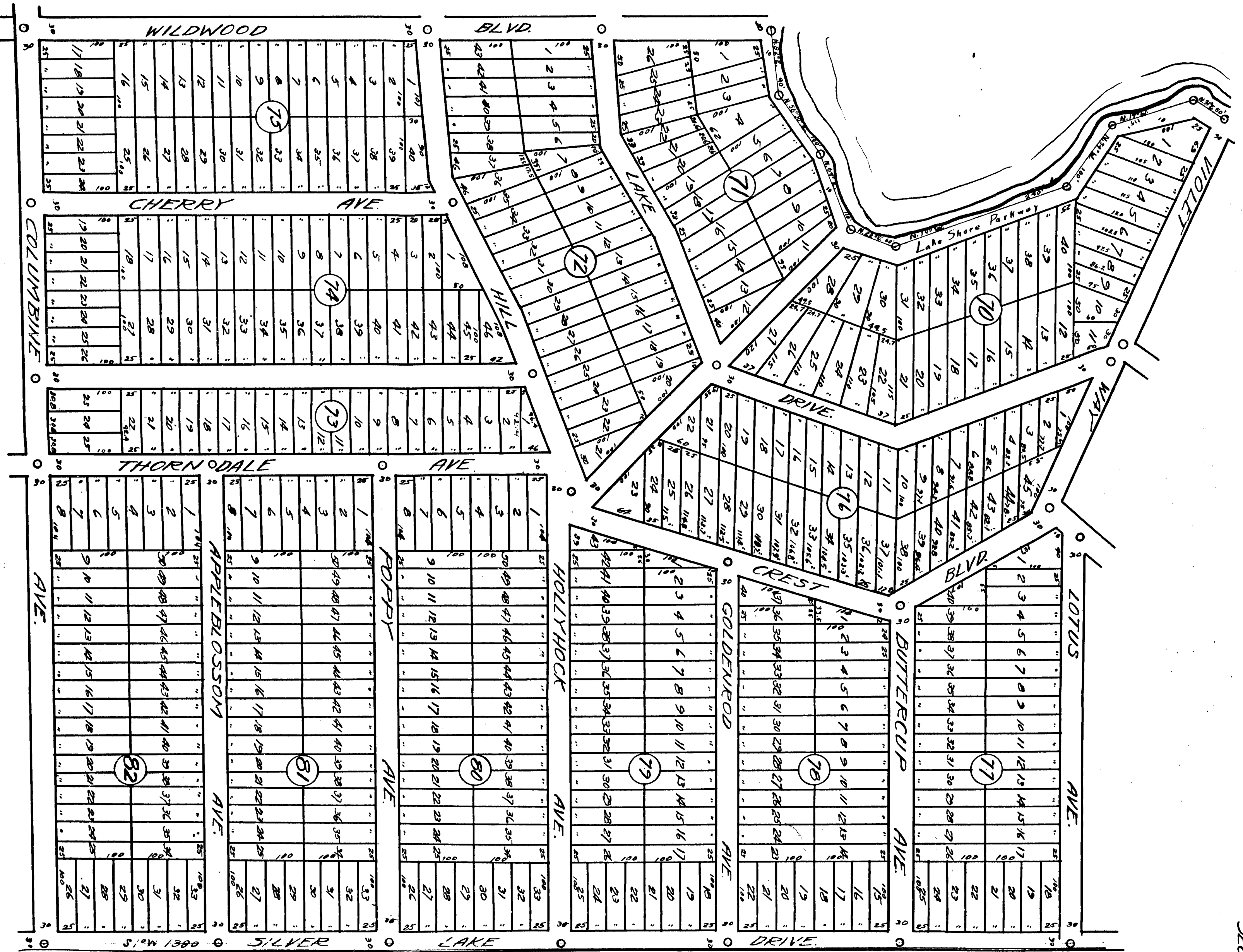


CHAMPAIGN-LAKES

PART OF SECTIONS 22 AND 22
TOWNSHIP NO 17 NORTH RANGE 14 WEST
LAKE COUNTY MICHIGAN
INCLUDING 10 SHEETS



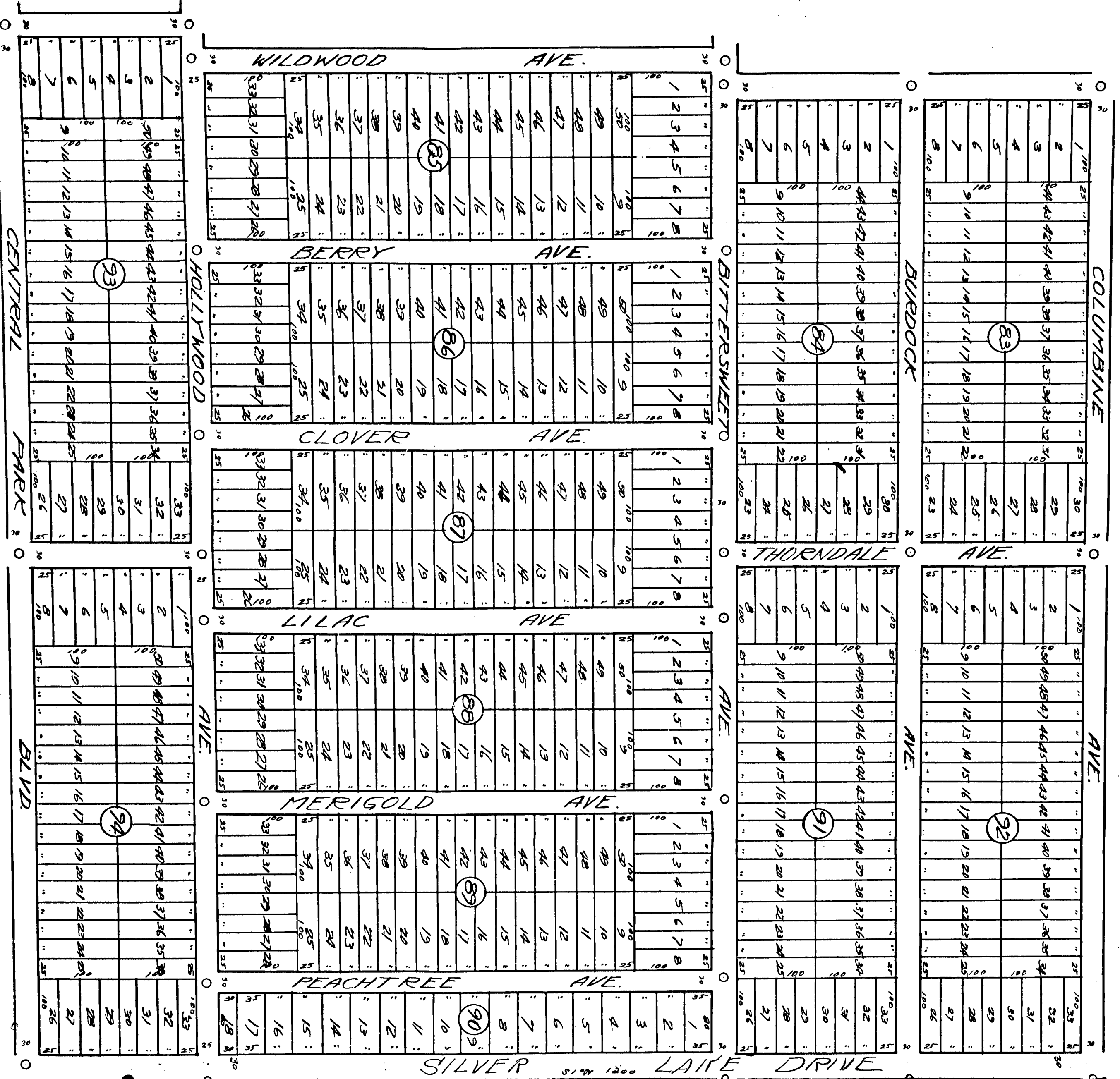
SHEET NO 2
PART OF SW 1/4 OF NE 1/4
SECTION 22 T17N R14W

SCALE
1 INCH = 100 FEET
ALL DIMENSIONS ARE
IN FEET AND DEC-
IMALS THEREOF.

CHANNING LAKES

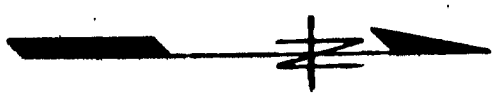
PART OF SECTIONS 21 AND 22
TOWNSHIP NO 17 NORTH RANGE 14 WEST
LAKE COUNTY MICHIGAN
INCLUDING 10 SHEETS

SHEET NO. 3
PART OF NW 1/4 OF SECTION 22
SECTION 22 T17N-R14W



SCALE

1 INCH = 100 FEET
ALL DIMENSIONS
ARE IN FEET AND
DECIMALS THEREOF

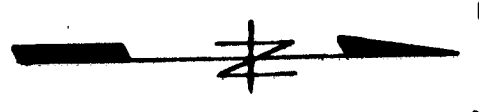


CHANNING LAKES

PART OF SECTIONS 21 AND 22
TOWNSHIP NORTH RANGE 14 WEST
LAKE COUNTY MICHIGAN

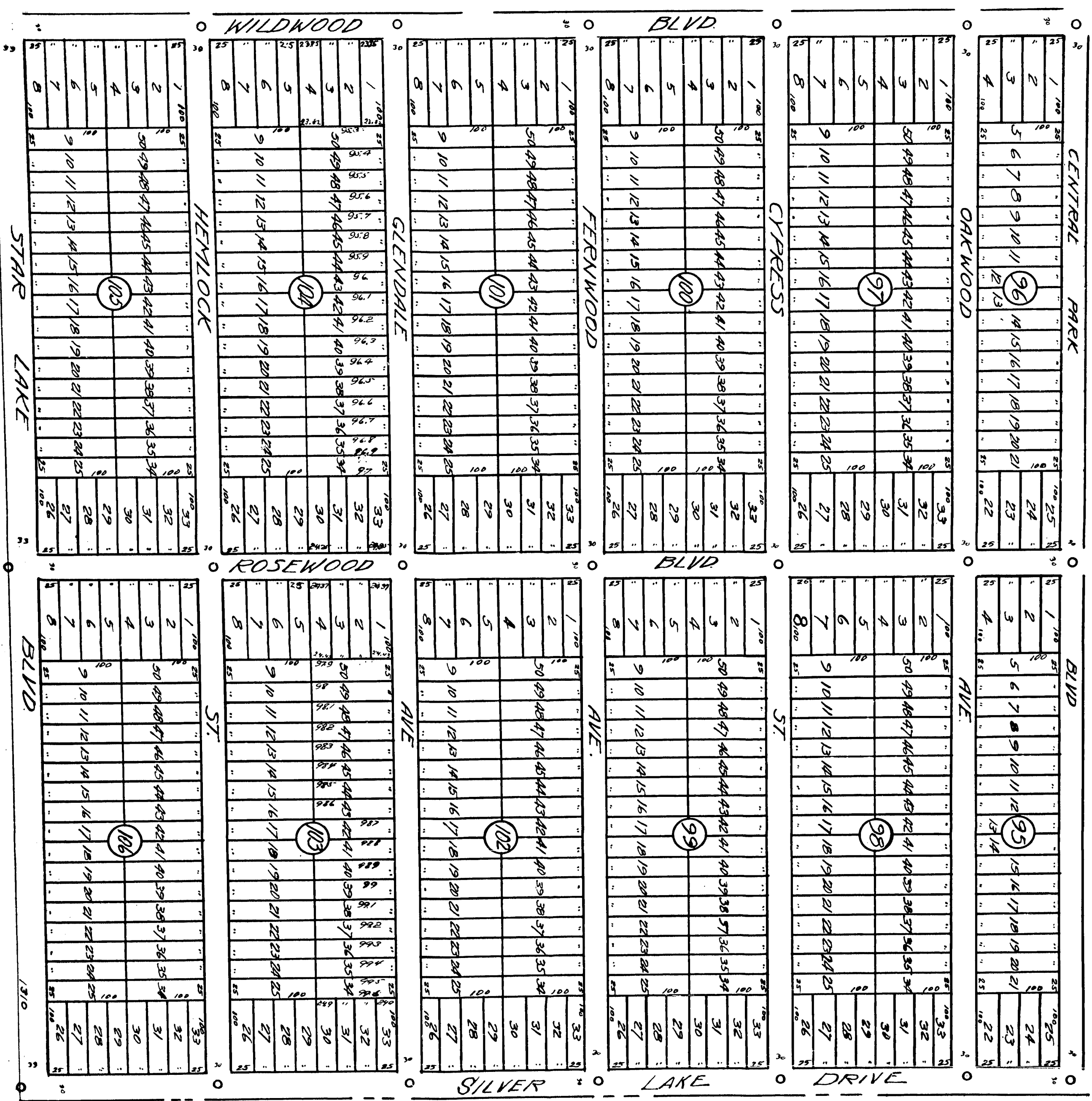
INCLUDING 10 SHEETS

SHEET NO. 4
PART OF SW 1/4 OF SE 1/4
SECTION 22 T17N-R14W



SCALE
1" = 100 FEET

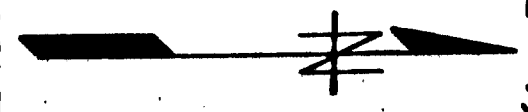
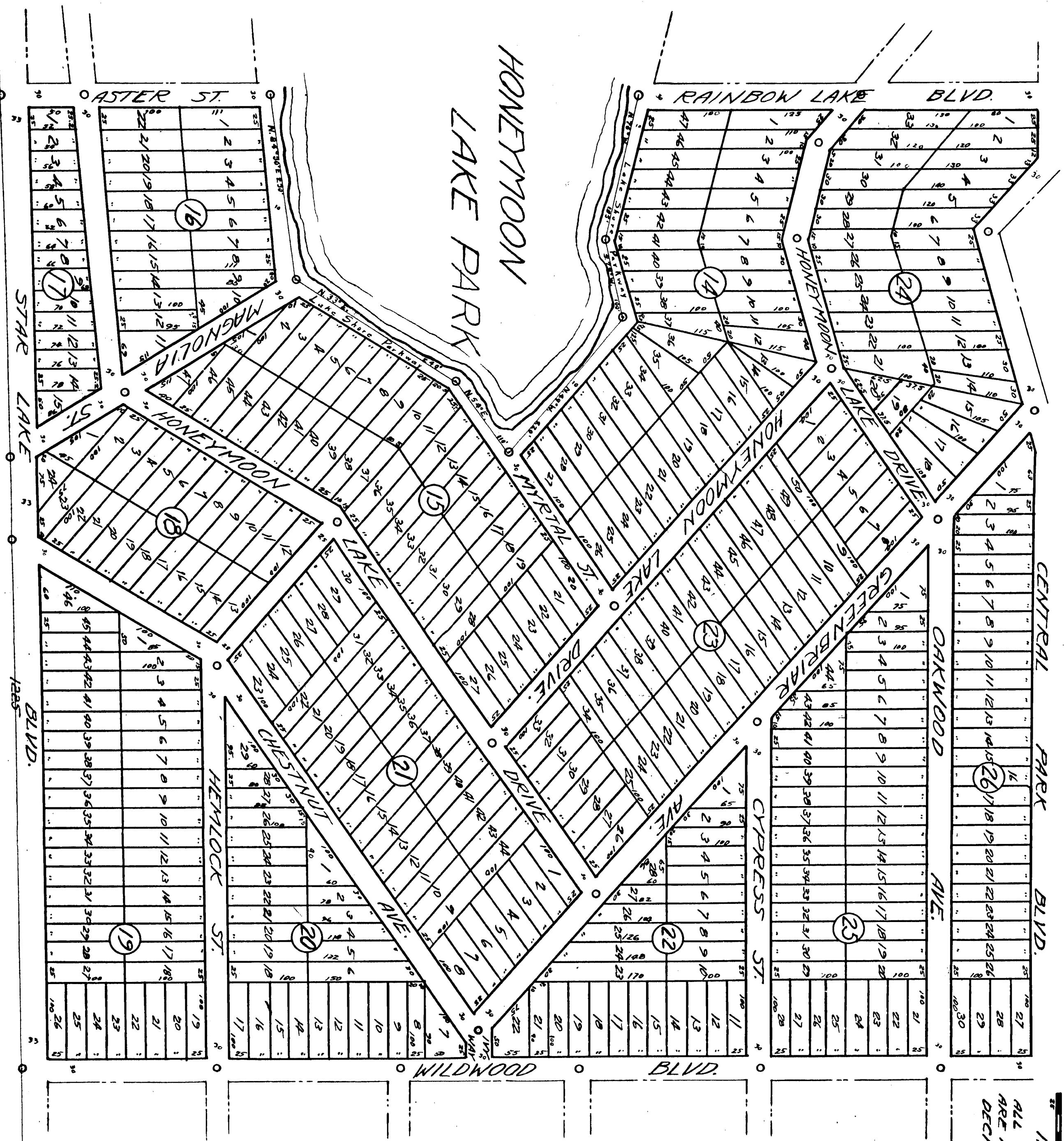
ALL DIMENSIONS ARE IN FEET AND DECIMALS THEREOF



3-18160

CHALIN-O-LAKES

PART OF SECTIONS 21 AND 22
TOWNSHIP NO 17 NORTH RANGE 14 WEST
LAKE COUNTY MICHIGAN
INCLUDING 10 SHEETS



SCALE
1/8 INCH = 100 FEET
ALL DIMENSIONS
ARE IN FEET AND
DECIMALS THEREOF.

SHEET NO 5
PART OF SE 1/4 OF SW 1/4
SECTION 22 T17N-R14W

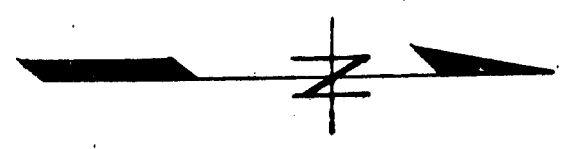
1816c

CHANN-O-LAKES

PART OF SECTIONS 21 AND 22
TOWNSHIP NO 17 NORTH RANGE 14 WEST
LAKE COUNTY MICHIGAN

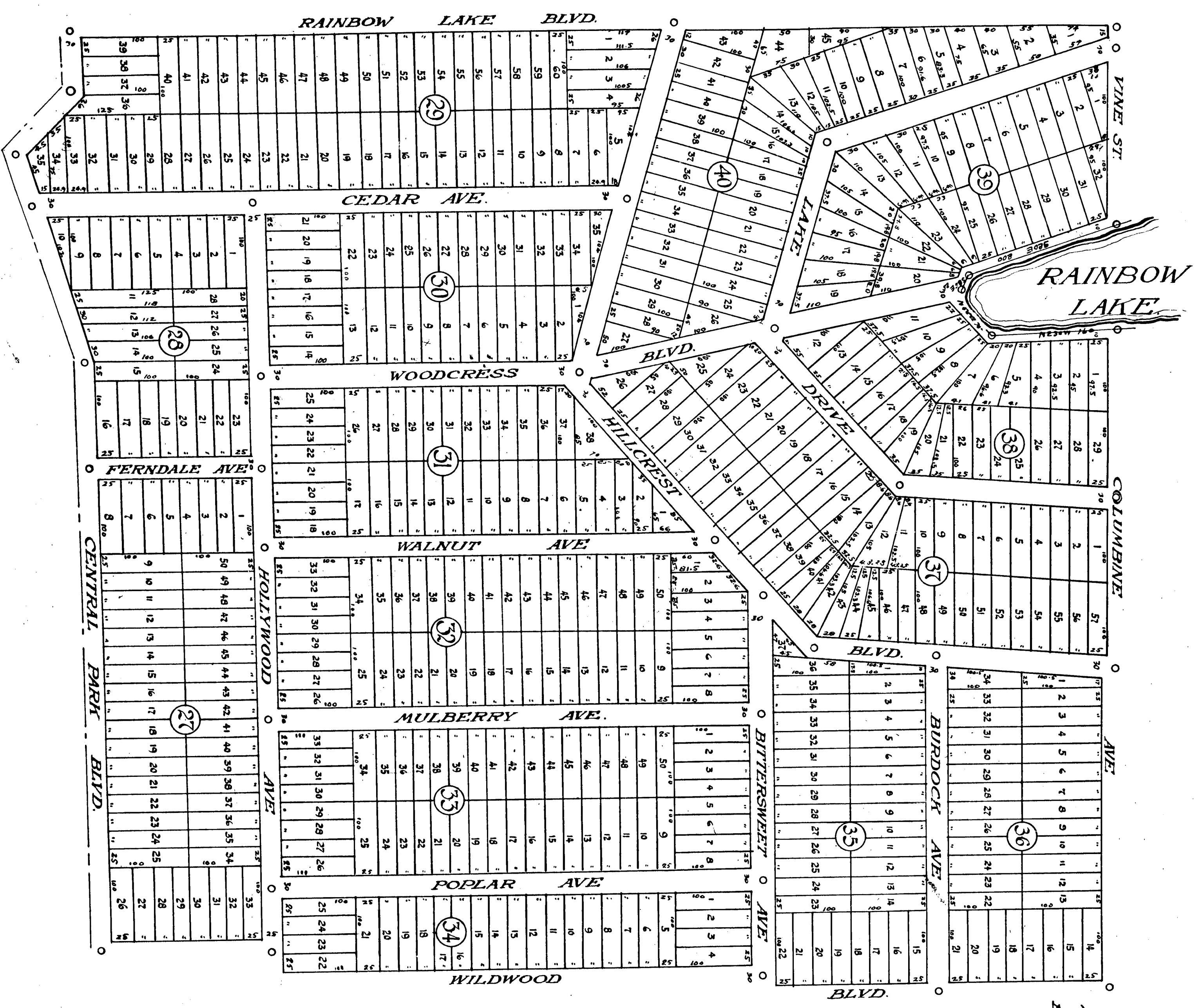
INCLUDING 10 SHEETS

SHEET NO. 6
PART OF NE 1/4 OF SW 1/4
SECTION 22 - T17N - R14W



SCALE
1 INCH = 100 FEET

ALL MEASUREMENTS
ARE IN FEET AND
DECIMALS THEREOF

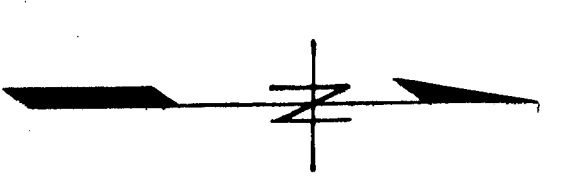


CHANNING LAKES

PART OF SECTIONS 21 AND 22
TOWNSHIP NO 17 NORTH RANGE 14 WEST
LAKE COUNTY MICHIGAN

INCLUDING 10 SHEETS.

SHEET NO 7
PART OF S.E. 1/4 OF NW 1/4
SECTION 22-T17N-R14W



ALL MEASUREMENTS
ARE IN FEET AND
DECIMALS THEREOF.

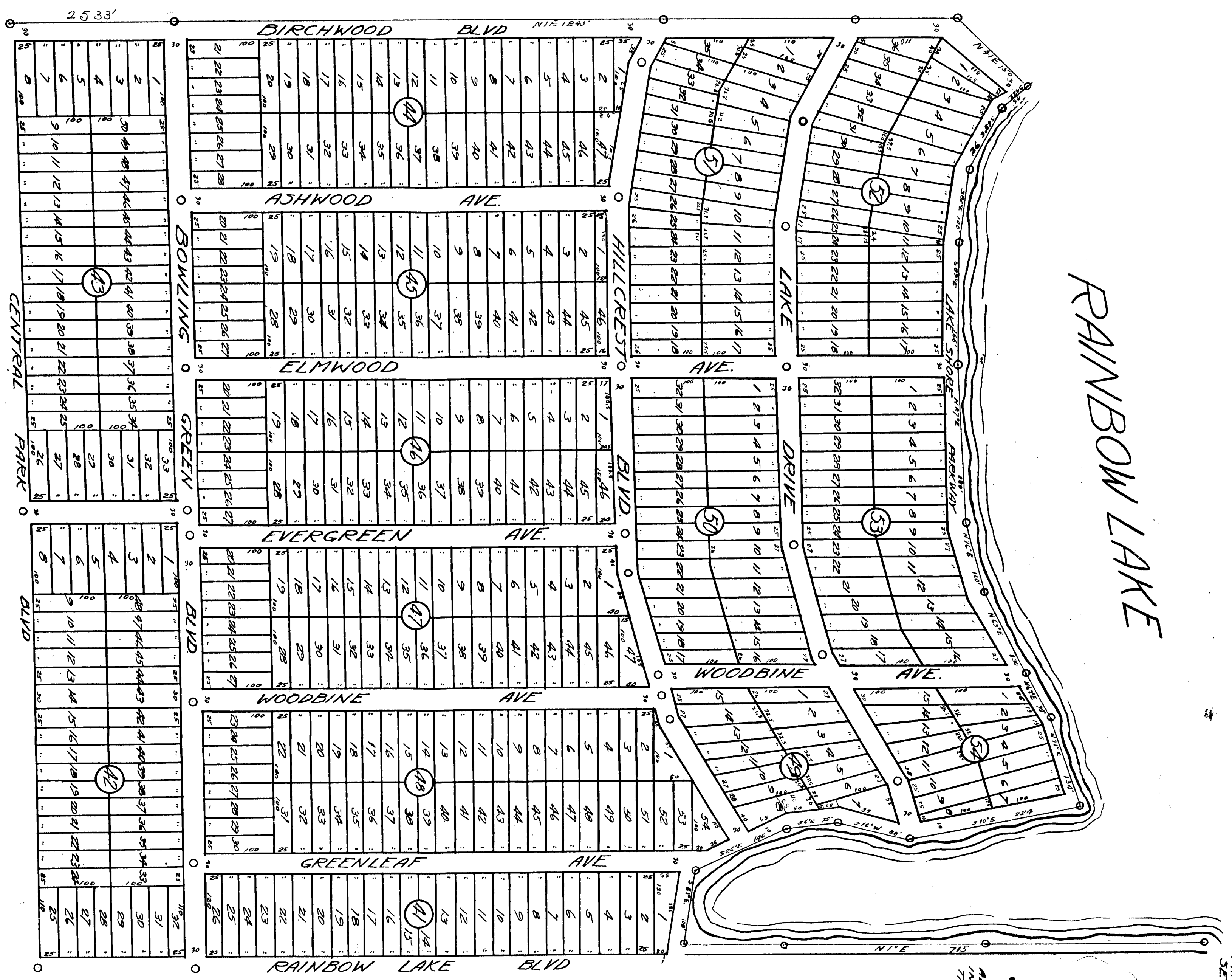
SCALE
25 50 100
1 INCH = 100 FEET



CHANNING LAKES

PART OF SECTIONS 21 AND 22
TOWNSHIP NO 17 NORTH RANGE 14 WEST
LAKE COUNTY MICHIGAN

INCLUDING 10 SHEETS



RAINBOW LAKE

SHEET NO. 8.
PART OF N.W. 1/4 OF SW 1/4
SECTION 22 T17N-R14W

SCALE
INCH = 100 FEET
ALL DIMENSIONS ARE
IN FEET AND DECIMALS
THEREOF

25 33'

BOWLING GREEN BLVD

CENTRAL PARK BLVD

CHALIN-O-LAKES

1810

PART OF SECTION 22
TOWNSHIP NO 17 NORTH RANGE 14 WEST
LAKE COUNTY MICHIGAN

INCLUDING 10 SHEETS

SHEET NO. 9
PART OF SW 1/4 OF SW 1/4
SECTION 22 T17N-R14W



SCALE
1 INCH = 100 FEET
ALL DIMENSIONS
ARE IN FEET AND
DECIMALS THEREOF

SEC 21
SEC 20
SEC 27
PLACE OF
BEGINNING

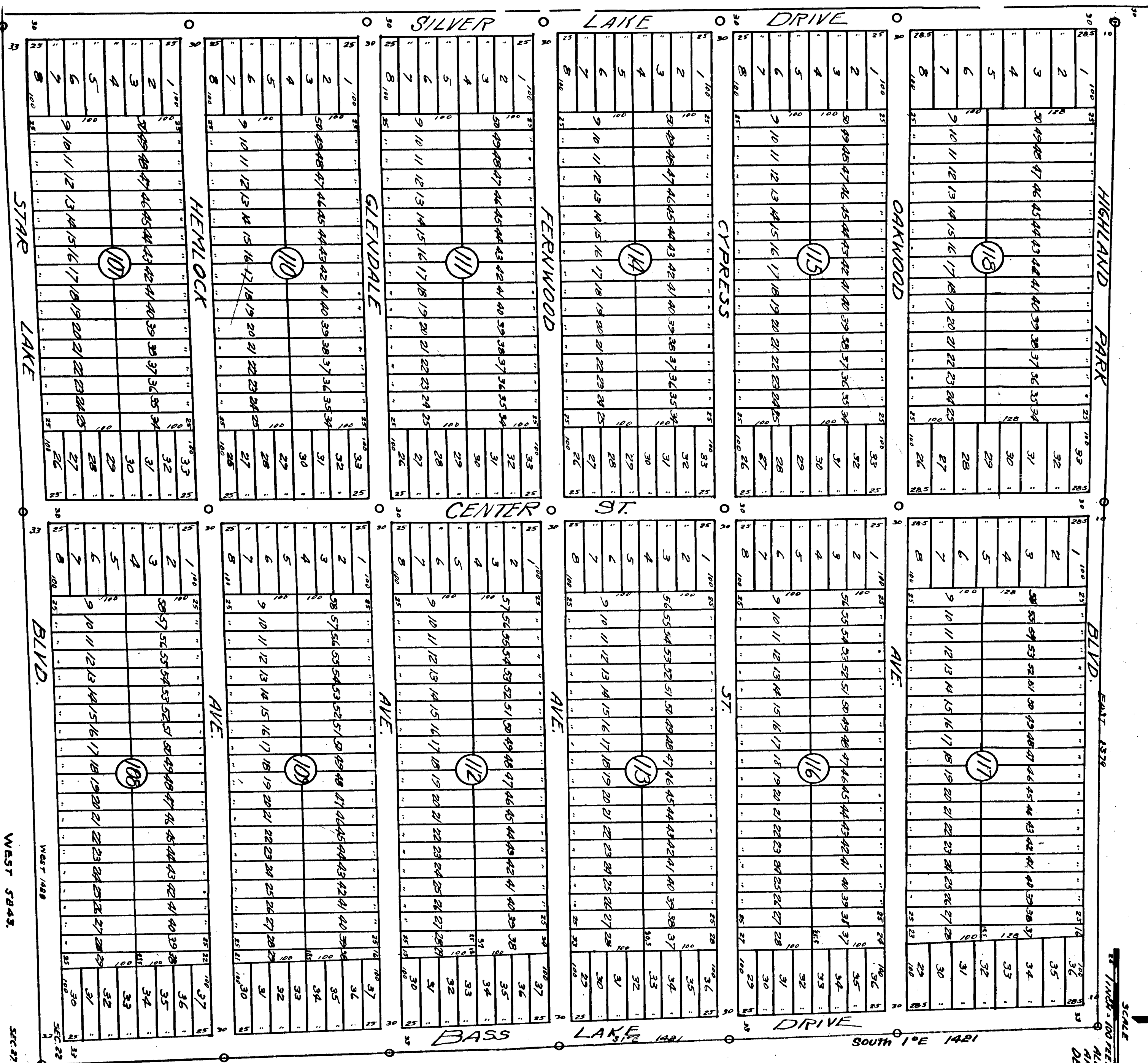
18160

CHANNING LAKES

PART OF SECTIONS 21 AND 22
TOWNSHIP NO 17 NORTH RANGE 14 WEST
LAKE COUNTY MICHIGAN

INCLUDING 10 SHEETS

SHEET NO 10
PART OF SE 1/4 OF SE 1/4
SECTION 22, T17N-R14W



SCALE
1" = 100 FEET
ALL DIMENSIONS
ARE IN FEET AND
DECIMALS THEREOF

SEC 23
FROM PIPE
COVER CORNER
TO SECTIONS
21-23-27-28
SEC 24

WEST 5843

SEC 21

SEC 22

SEC 26

CHANNING LAKES

PART OF SECTIONS 21 AND 22
TOWNSHIP NO 17 NORTH RANGE 14 WEST
LAKE COUNTY MICHIGAN
INCLUDING 10 SHEETS



SHEET NO 2
PART OF SHEET OF MAP
SECTION 22 TOWN-PAW

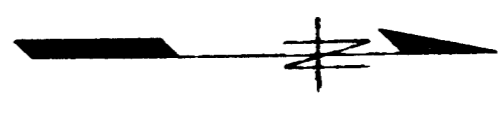
SCALE
1 INCH = 100 FEET
ALL DIMENSIONS ARE
IN FEET AND DEC-
IMALS THEREOF

18160

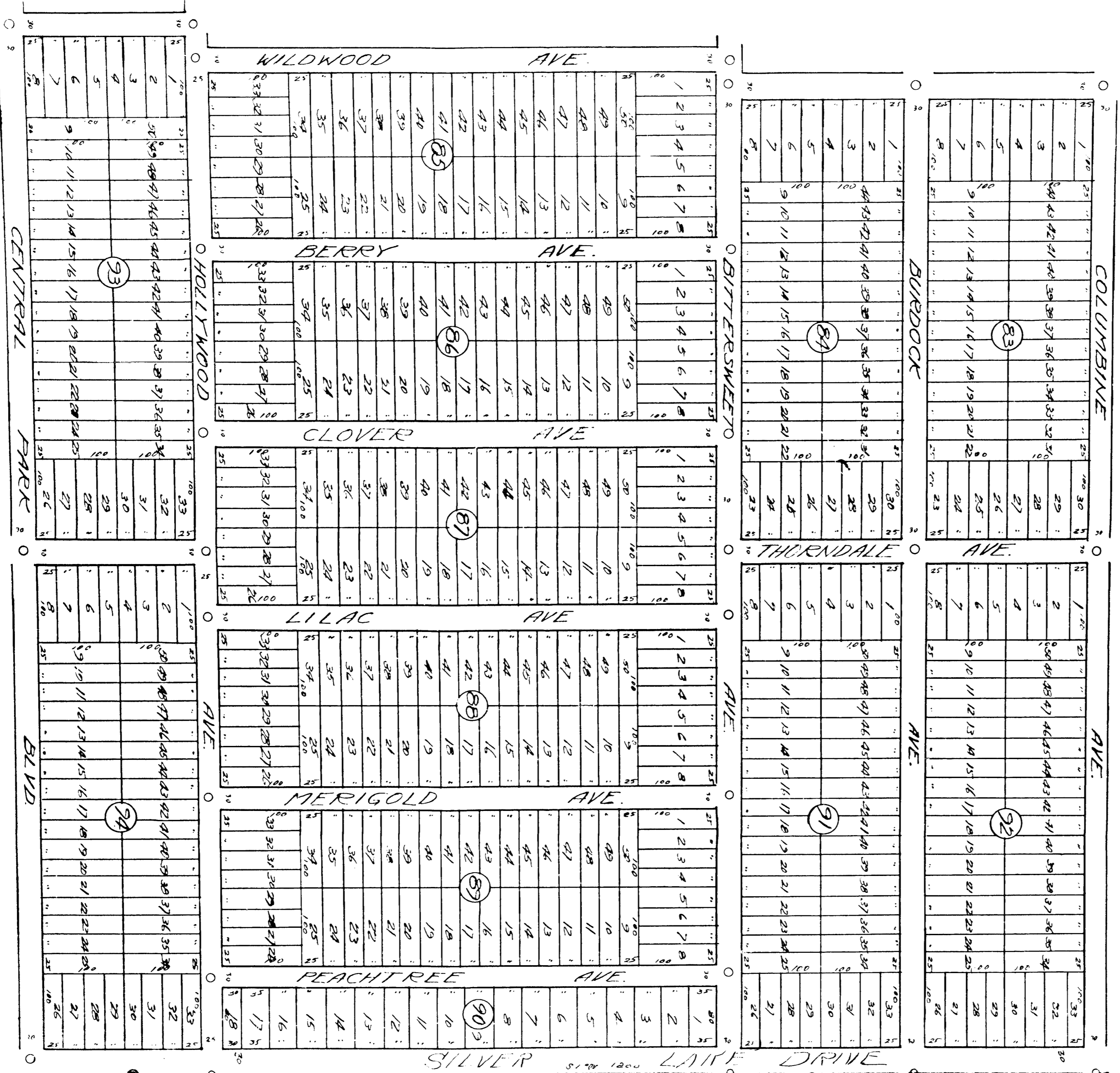
CHANNING LAKES

PART OF SECTION 22 AND 23
TOWNSHIP NO 17 NORTH RANGE 14 WEST
LAKE COUNTY MICHIGAN
INCLUDING 10 SHEETS

SHEET NO 3
PART OF NW 1/4 SEC 22
SECTION 22 T17N R14W



SCALE
1 INCH = 100 FEET
ALL DIMENSIONS
ARE IN FEET AND
DECIMALS THEREOF

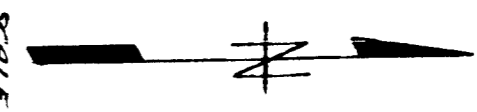


CHANNING LAKES

PART OF SECTIONS 21 AND 22
TOWNSHIP NO 17 NORTH RANGE 14 WEST
LAKE COUNTY MICHIGAN

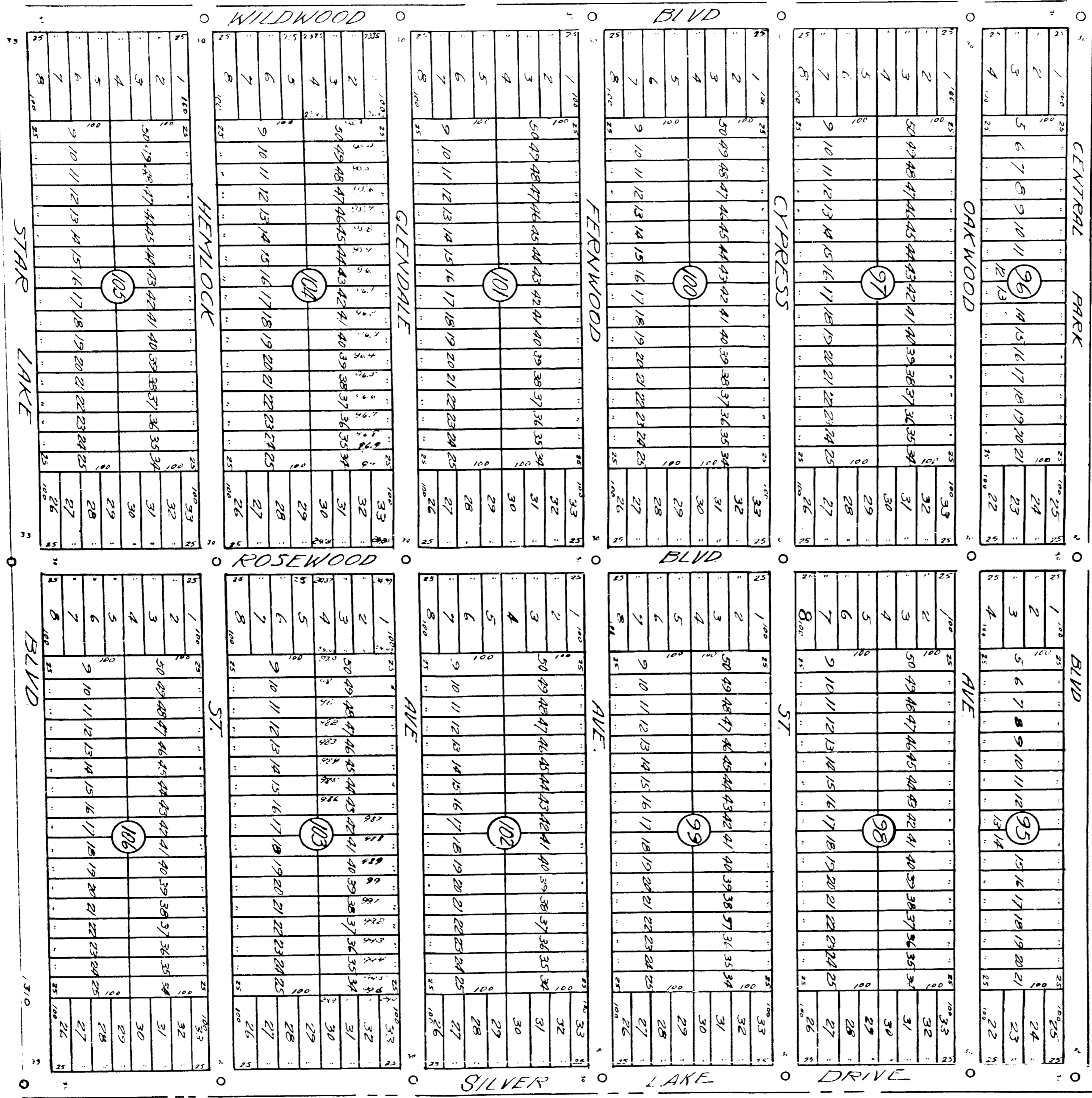
INCLUDING 10 SHEETS

SHEET NO. 4
PART OF SW 1/4 OF SE 1/4
SECTION 22 T17N. R. 14 W. 1/2



SCALE
1" = 100 FEET

ALL DIMENSIONS &
ARE IN FEET AND
DECIMALS THEREOF



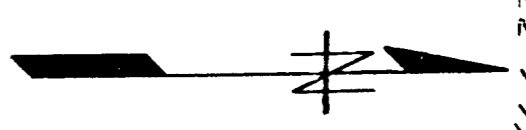
18160

CHANNING LAKES

PART OF SECTIONS 21 AND 22
TOWNSHIP NO 17 NORTH RANGE 14 WEST
LAKE COUNTY MICHIGAN

INCLUDING 10 SHEETS

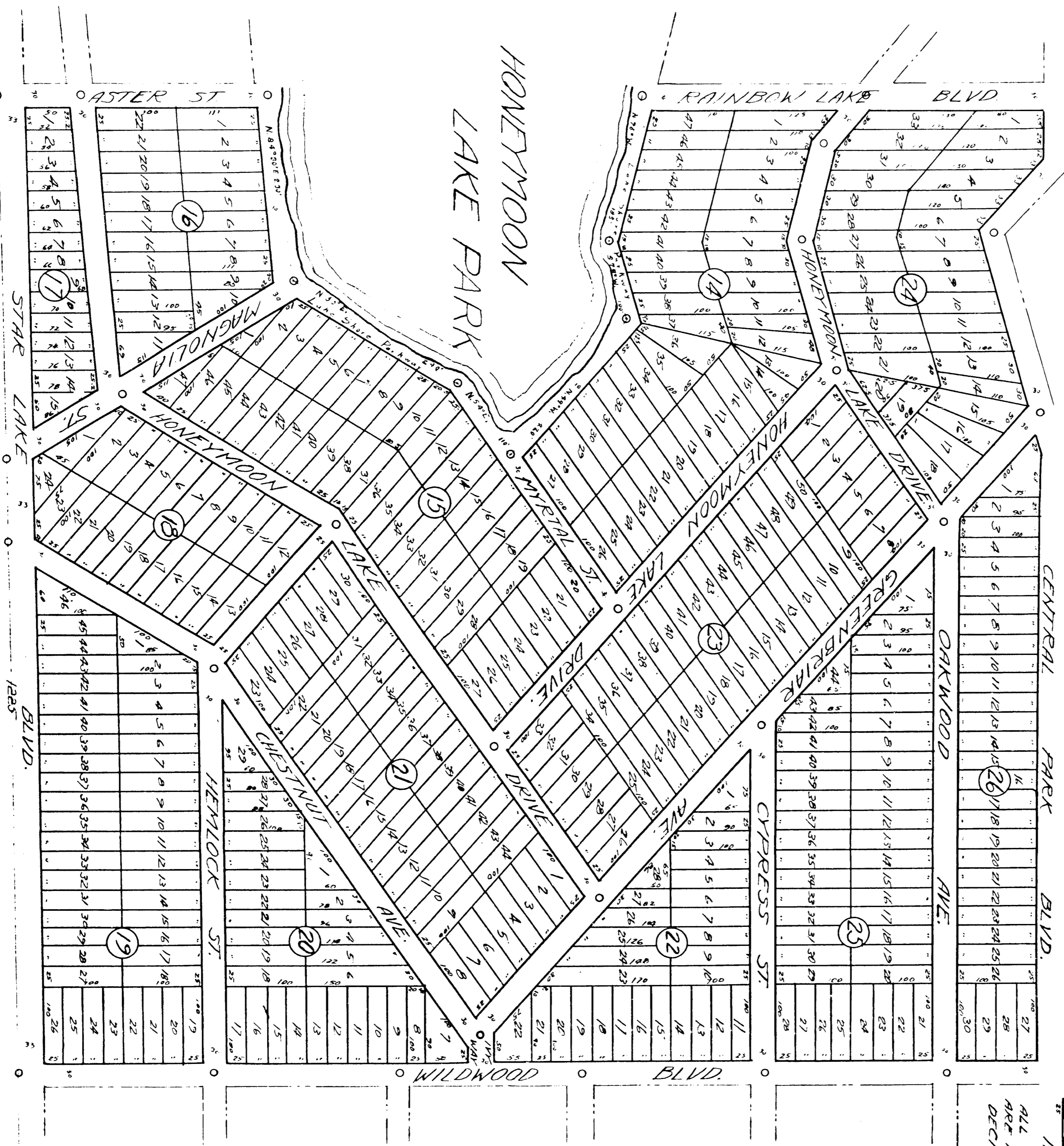
SHEET NO 5
PART OF SE 1/4 OF SW 1/4
SECTION 22 T17N R14W



SCALE

1 INCH = 100 FEET

ALL DIMENSIONS
ARE IN FEET AND
DECIMALS THEREOF

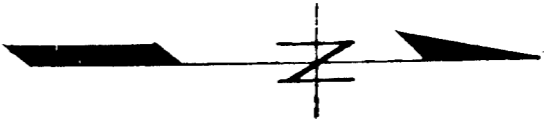


CHANNING LAKES

PART OF SECTIONS 21 AND 22
TOWNSHIP NO 17 NORTH RANGE 14 WEST
LAKE COUNTY MICHIGAN

INCLUDING 10 SHEETS

SHEET NO. 6.
PART OF NE 1/4 OF SW 1/4
SECTION 22 - T17N. R14W.



ALL MEASUREMENTS
ARE IN FEET AND
DECIMALS THEREOF

SCALE:
25 50 100
1 INCH = 100 FEET.

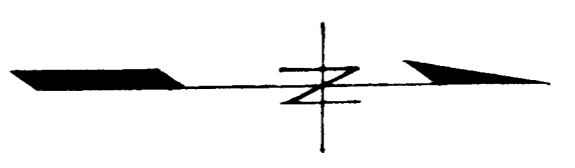


CHALIN-O-LAKES

PART OF SECTIONS 21 AND 22
TOWNSHIP NO 17 NORTH RANGE 14 WEST
LAKE COUNTY MICHIGAN

INCLUDING 10 SHEETS.

SHEET NO 7
PART OF SW 1/4 OF NW 1/4
SECTION 22-T17N-R14W



ALL MEASUREMENTS
ARE IN FEET AND
DECIMALS THEREOF.

SCALE
1" = 100 FEET



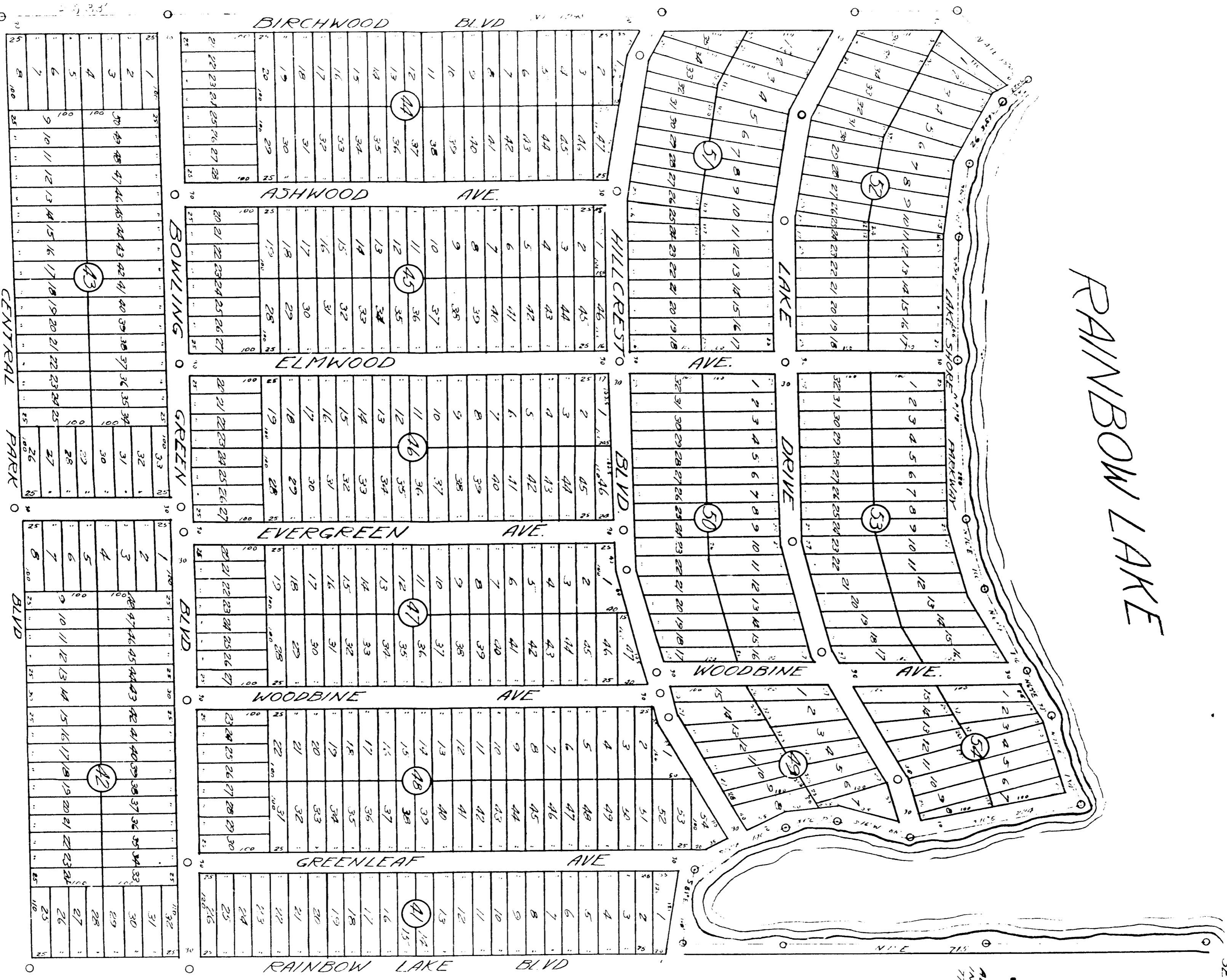
18760

CHALIN-O-LAKES

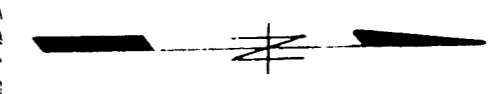
PART OF SECTION 22 AND 23
TOWNSHIP NO 17 NORTH RANGE 14 WEST
LAKE COUNTY MICHIGAN

INCLUDING 10 SHEETS

RAINBOW LAKE



SHEET NO. 8
PART OF NW 1/4 OF SW 1/4
SECTION 22 T37N R14W



SCALE
1 INCH = 100 FEET
ALL DIMENSIONS AND
IN FEET AND DECIMALS
THEREOF

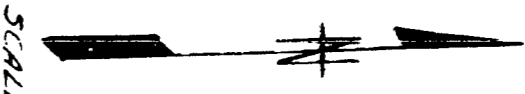
18160

CHANN-O-LAKES

PART OF SECTION 22 AND 23
TOWNSHIP NO 17 NORTH RANGE 14 WEST
LAKE COUNTY MICHIGAN

INCLUDING 10 SHEETS

SHEET NO. 9
PART OF SW 1/4 OF SW 1/4
SECTION 22 T17N-R14W



SCALE
1 INCH = 100 FEET

ALL DIMENSIONS
ARE IN FEET AND
DECIMALS THEREOF



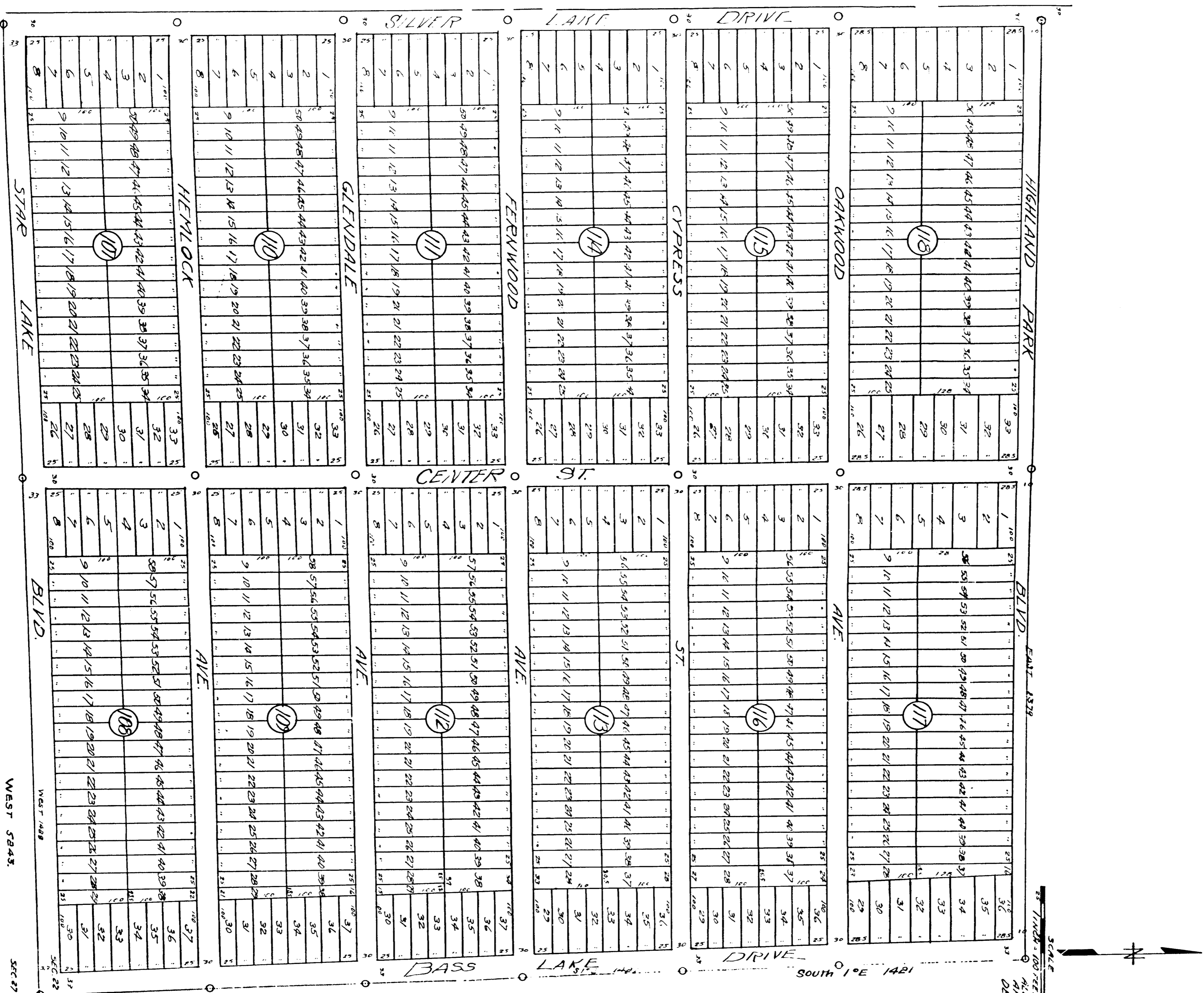
SEC 21
SEC 22
SEC 27
PLACE OF
BEGINNING

CHALIN-O-LAKES

PART OF SECTION 22 AND 23
TOWNSHIP NO 17 NORTH RANGE 14 WEST
LAKE COUNTY MICHIGAN

INCLUDING 10 SHEETS

SHEET NO 10
PART OF SE 1/4 OF SE 1/4
SECTION 22, T. 17N. R. 14W.



S&C 23
FROM PIPE
CORNER CORNER
TO SECTIONS
22-23-27-28
S&C 24

18160